

SWMP

As 12-volt and 24-volt motor with Interference suppression and hall sensors



Technical description

- | | |
|--------------------------|---|
| Motor housing | Sheet steel, rolled & corrosion protection |
| Magnetic field | Permanent magnet |
| Type of transmission | Worm gear transmission |
| Transmission housing | Zinc die casting |
| Gearwheel material | Plastic, metal |
| Transmission lubrication | Grease, permanent lubrication |
| Mechanical interface | Drive shaft |
| Electrical interface | Stranded wires with plug or tin-plated stranded wires |
| Sensor | Optional |
| Thermal protection | Optional |
| Interference suppression | Optional |

Applications

Industry

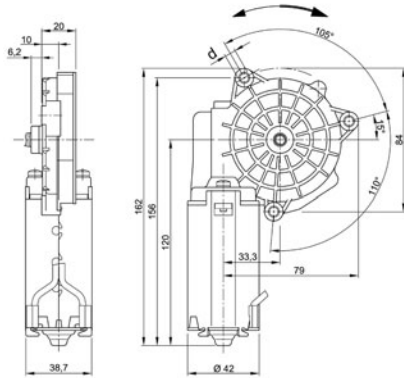
General mechanical engineering, machines, agricultural technology, office machines, laboratory devices, medical technology, traffic and communication technology, photo/optics

- Information
- GMK · GML
- GMP
- GMAG
- GMP1
- GMPS
- GMPD
- GMPG
- SWMP**
- DCK31
- DCK35
- SW2L
- SWNV
- SWMG
- SW3K

Series SWMP

Motor type 403 194

Design Data	
Commutation	Brushed
Direction of rotation	Bi-directional
Bearing type	



Performance data		
Rated voltage [V]	U_N	24
Nominal torque [Nm]	M_N	2.00
No-load speed [min^{-1}]	n_0	50.0
Nominal power [W]	P_N	8.73
Nominal current [A]	I_N	1.5
Nominal force [kN]	F_N	0.00
Duty cycle		s1

Sensor data	
Pulses	0
Output channels	0

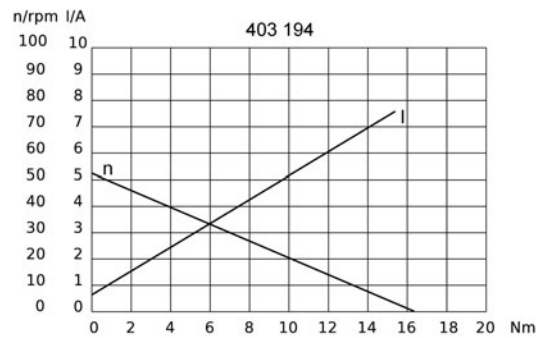
Other data	
Gear ratio	85/1
Gear wheel material	Resinbonded fabric
Suppression components	
Enclosure class	IP30
Weight [kg]	0.710

Remarks: d = M6

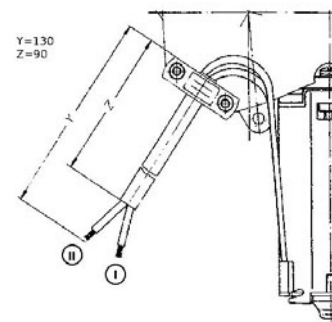
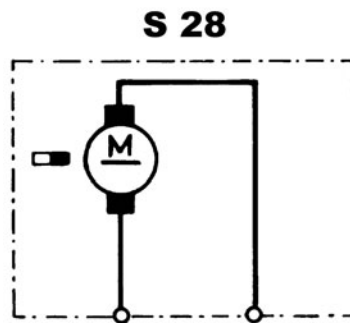
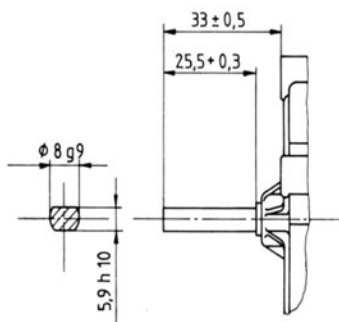
Motor picture



Characteristic curves



Output shaft drawing (W), Wiring diagrams (S) and Connector layout (K)



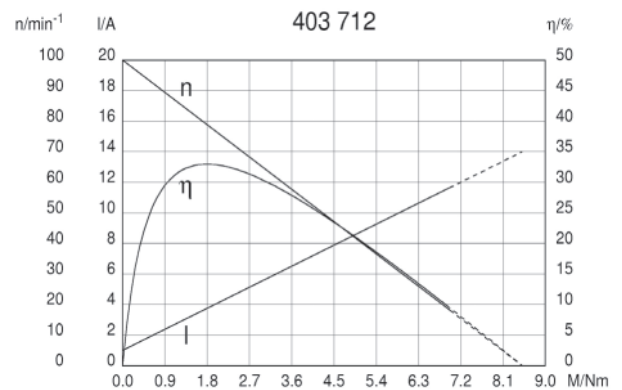
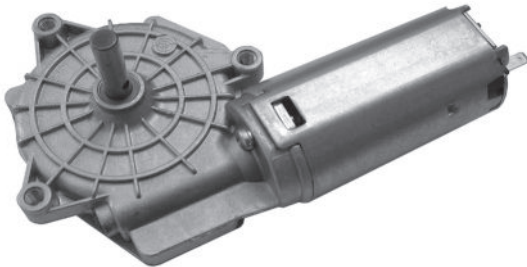
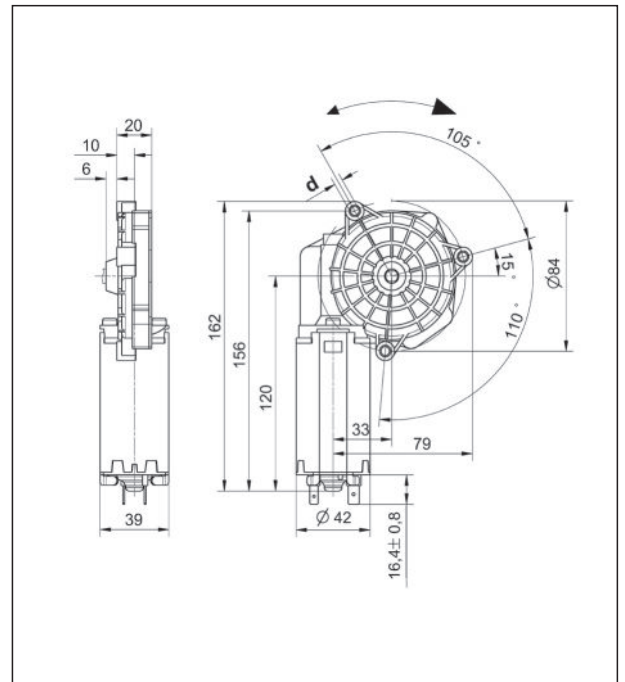
I: green
II: black

Baureihe SWMP

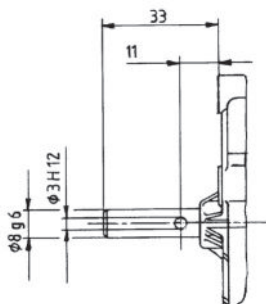
Motortyp 403712

Technische Daten

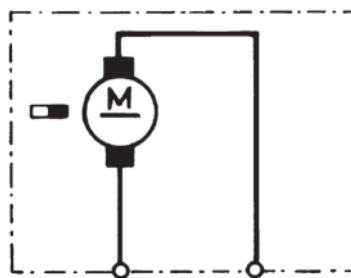
Nennspannung	U_N	[Volt]	12
Leerlaufdrehzahl	n_0	[min ⁻¹]	100
Nenn Drehmoment	M_N	[Nm]	1,30
Einschaltdauer		%	
Ein		[min]	
Anlaufmoment	M_A	[Nm]	7,00
Getriebeübersetzung			83:2
Ankerwiderstand	2Lamellen	R	mOhm 1000
	4Lamellen	R	mOhm 900
Zahnradwerkstoff			Kunststoff
Hall IC			
Impulse/Umdrehung Antriebswelle			
Ausgangskanäle			
Bemerkung		d=M6, Kugellager	
Schutzart			IP30
Gewicht		[kg]	0,71



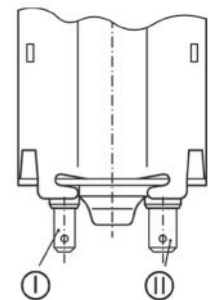
Abtriebswelle W173



Schaltbild S28



Anschluss K117



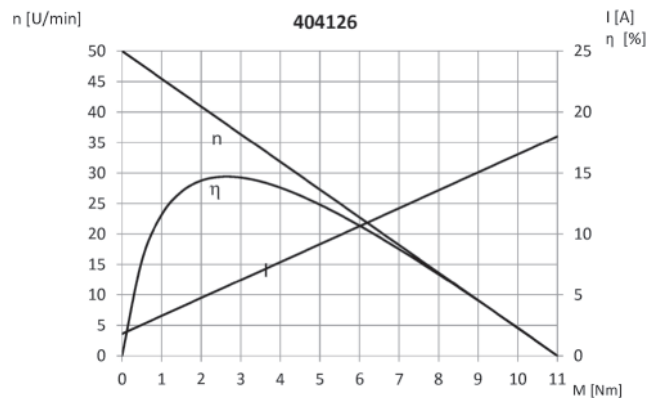
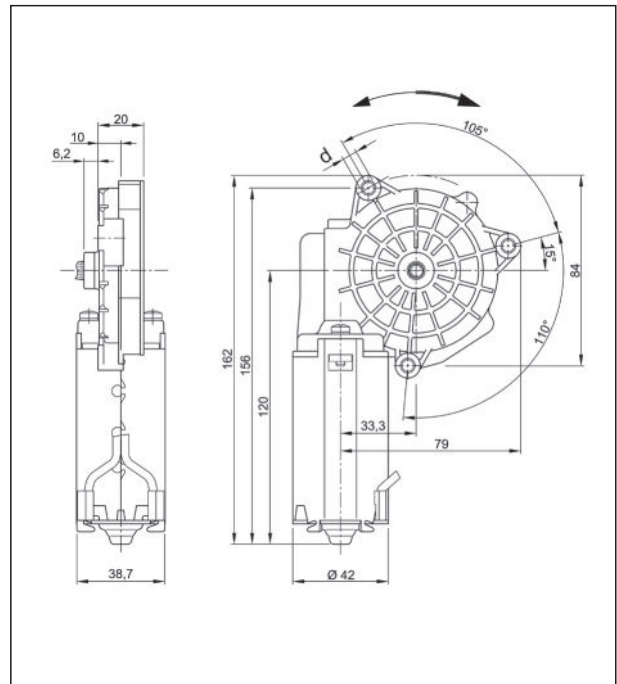
- I Flachsteckerenden
4,8 x 0,8 DIN 46 244
- II Flachsteckerenden
6,3 x 0,8 DIN 46 244

Baureihe SWMP

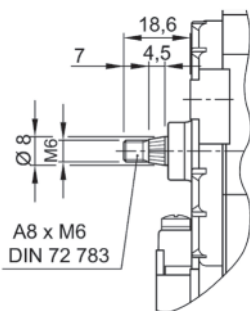
Motortyp 404126

Technische Daten

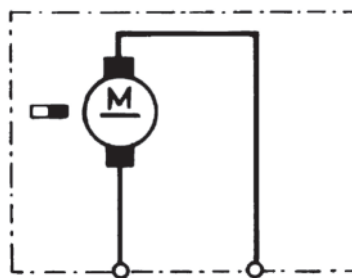
Nennspannung	U_N	[Volt]	12
Leerlaufdrehzahl	n_0	[min ⁻¹]	50
Nennmoment	M_N	[Nm]	2,00
Einschaltdauer		%	
Ein		[min]	
Anlaufmoment	M_A	[Nm]	10,00
Getriebeübersetzung			85:1
Ankerwiderstand	2Lamellen	R	mOhm 0,9
	4Lamellen	R	mOhm 0,7
Zahnradwerkstoff			Kunststoff
Hall IC			
Impulse/Umdrehung Antriebswelle			
Ausgangskanäle			
Bemerkung			d=M6
Schutzart			IP30
Gewicht		[kg]	0,71



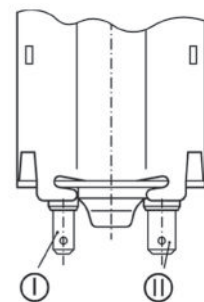
Abtriebswelle W22



Schaltbild S28



Anschluss K117



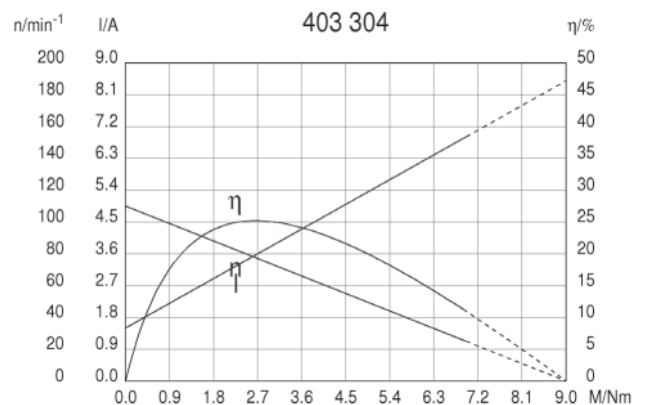
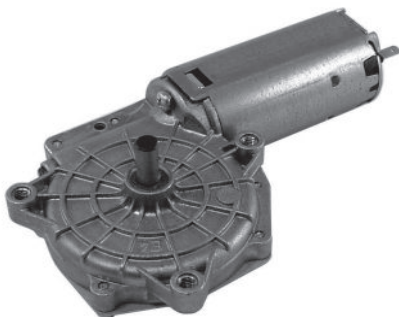
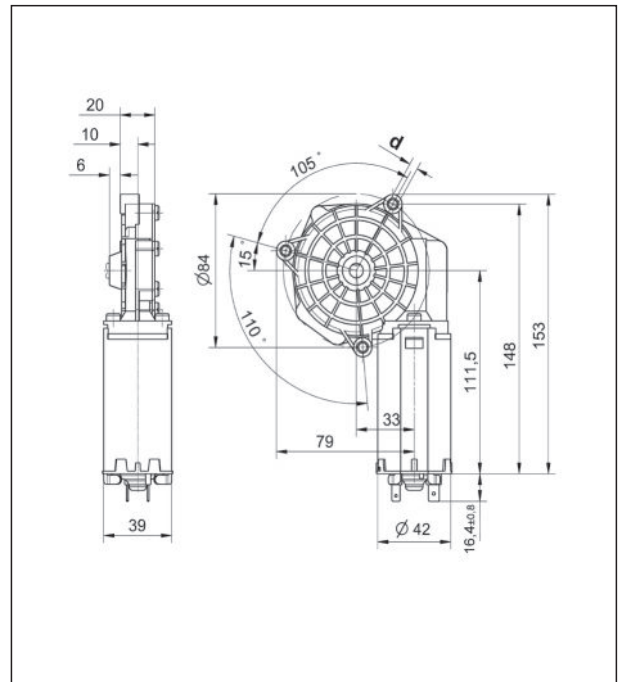
- I Flachsteckerenden
4,8 x 0,8 DIN 46 244
- II Flachsteckerenden
6,3 x 0,8 DIN 46 244

Baureihe SWMP

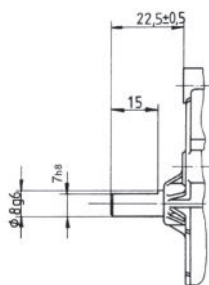
Motortyp 403304

Technische Daten

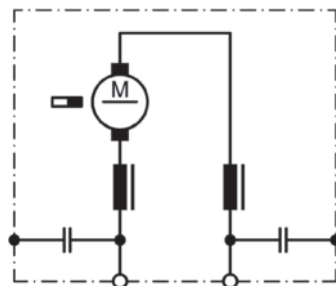
Nennspannung	U_N	[Volt]	24
Leerlaufdrehzahl	n_0	[min ⁻¹]	110
Nenn Drehmoment	M_N	[Nm]	1,30
Einschaltdauer		%	
Ein		[min]	
Anlaufmoment	M_A	[Nm]	7,00
Getriebeübersetzung			83:2
Ankerwiderstand	2Lamellen	R	mOhm 3300
	4Lamellen	R	mOhm 2800
Zahnradwerkstoff			Kunststoff
Hall IC			
Impulse/Umdrehung Antriebswelle			
Ausgangskanäle			
Bemerkung		d=M6, Kugellager	
Schutzart			IP30
Gewicht		[kg]	0,71



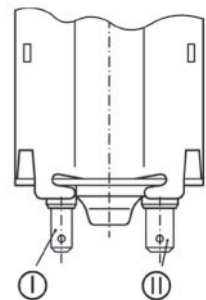
Abtriebswelle W403304



Schaltbild S30



Anschluss K117



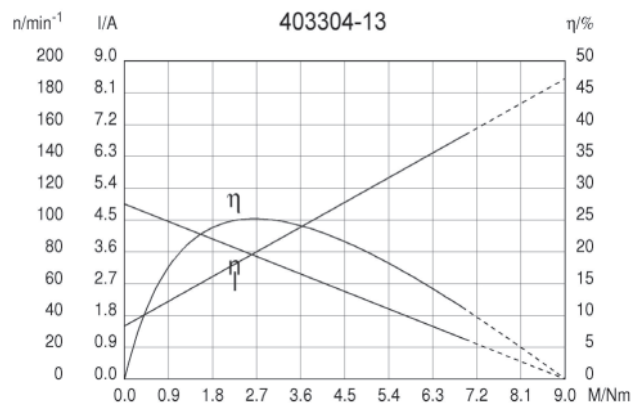
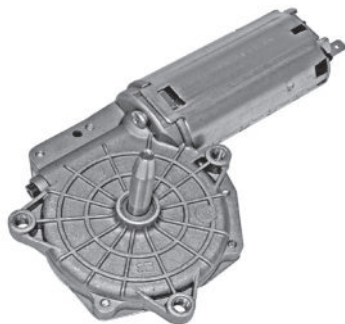
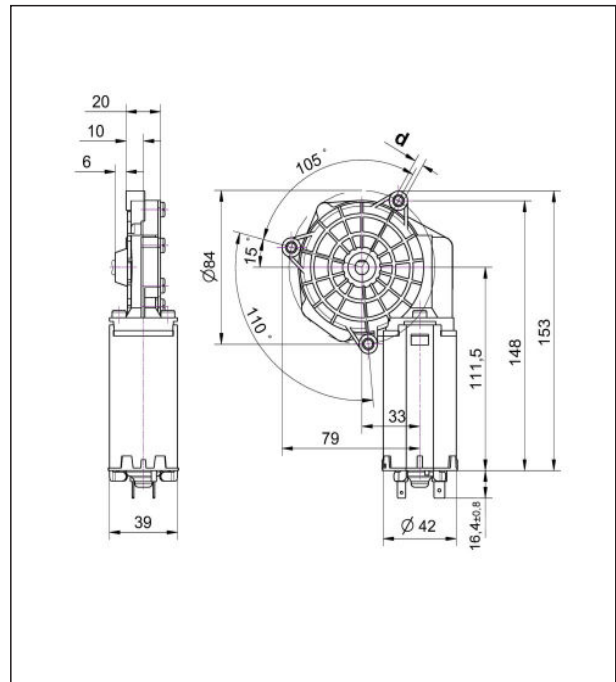
- I Flachsteckerenden 4,8 x 0,8 DIN 46 244
- II Flachsteckerenden 6,3 x 0,8 DIN 46 244

Baureihe SWMP

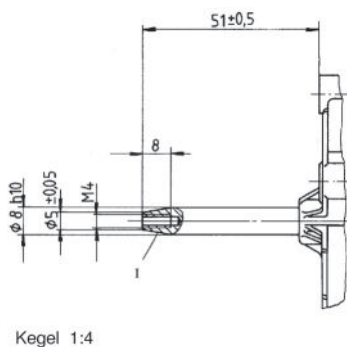
Motortyp 403304-13

Technische Daten

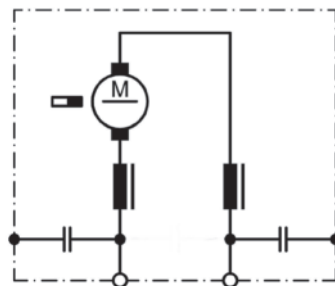
Nennspannung	U_N	[Volt]	24
Leerlaufdrehzahl	n_0	[min ⁻¹]	110
Nennmoment	M_N	[Nm]	1,30
Einschaltdauer		%	
Ein		[min]	
Anlaufmoment	M_A	[Nm]	7,00
Getriebeübersetzung			83:1
Ankerwiderstand	2Lamellen	R	mOhm
	4Lamellen	R	mOhm
Zahnradwerkstoff			Kunststoff
Hall IC			
Impulse/Umdrehung Antriebswelle			
Ausgangskanäle			
Bemerkung		d = M6; Kugellager	
Schutzart			IP30
Gewicht		[kg]	0,71



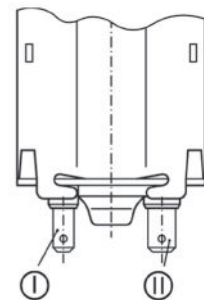
Abtriebswelle W115



Schaltbild S30



Anschluss K117

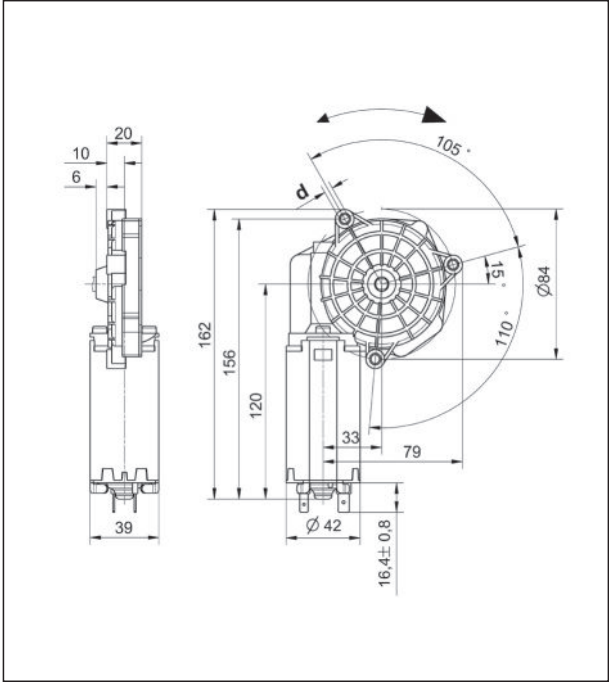


- I Flachsteckerenden
4,8 x 0,8 DIN 46 244
- II Flachsteckerenden
6,3 x 0,8 DIN 46 244

Baureihe SWMP

Motortyp 403280

Technische Daten			
Nennspannung	U_N	[Volt]	24
Leerlaufdrehzahl	n_0	[min ⁻¹]	52
Nenn Drehmoment	M_N	[Nm]	2,00
Einschaltdauer		%	
Ein		[min]	
Anlaufmoment	M_A	[Nm]	16,50
Getriebeübersetzung			85:1
Ankerwiderstand	2Lamellen	R	mOhm 3300
	4Lamellen	R	mOhm 2800
Zahnradwerkstoff			Kunststoff
Hall IC			
Impulse/Umdrehung Antriebswelle			
Ausgangskanäle			
Bemerkung		d=M6	
Schutzart			IP30
Gewicht		[kg]	0,71



403280

Abtriebswelle W45

Schaltbild S30

Anschluss K117

- I Flachsteckerenden 4,8 x 0,8 DIN 46 244
- II Flachsteckerenden 6,3 x 0,8 DIN 46 244

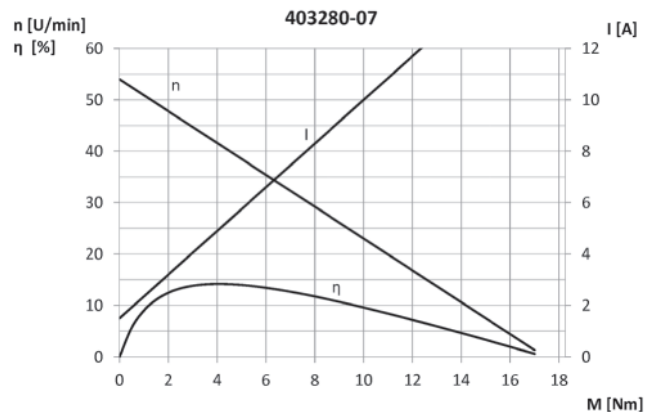
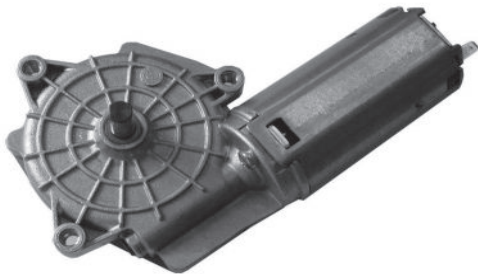
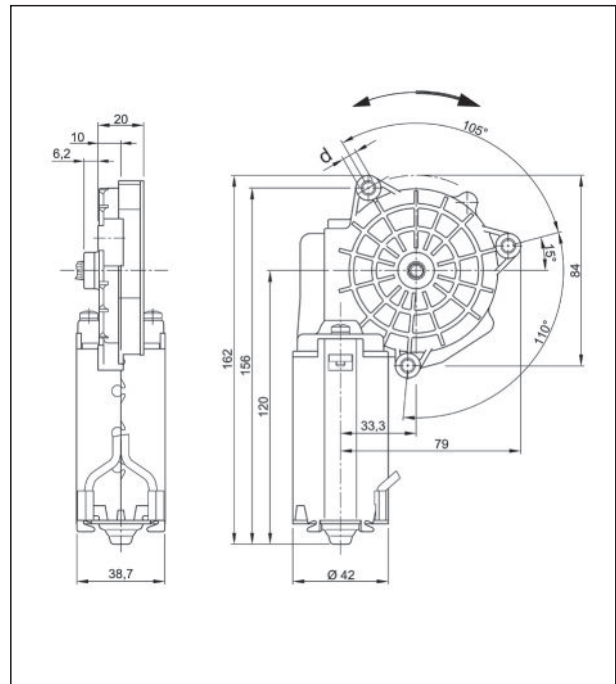
Änderungen und Irrtümer, auch technischer Art, vorbehalten.

Baureihe SWMP

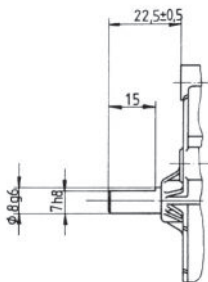
Motortyp 403280-07

Technische Daten

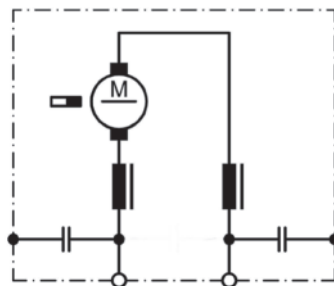
Nennspannung	U_N	[Volt]	24
Leerlaufdrehzahl	n_0	[min ⁻¹]	54
Nennmoment	M_N	[Nm]	2,00
Einschaltdauer		%	
Ein		[min]	
Anlaufmoment	M_A	[Nm]	16,50
Getriebeübersetzung			85:1
Ankerwiderstand	2Lamellen	R	mOhm
	4Lamellen	R	mOhm
Zahnradwerkstoff			Kunststoff
Hall IC			
Impulse/Umdrehung Antriebswelle			
Ausgangskanäle			
Bemerkung		$d = 7,5$	
Schutzart			IP30
Gewicht		[kg]	0,71



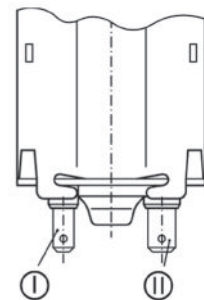
Abtriebswelle W45



Schaltbild S30



Anschluss K117



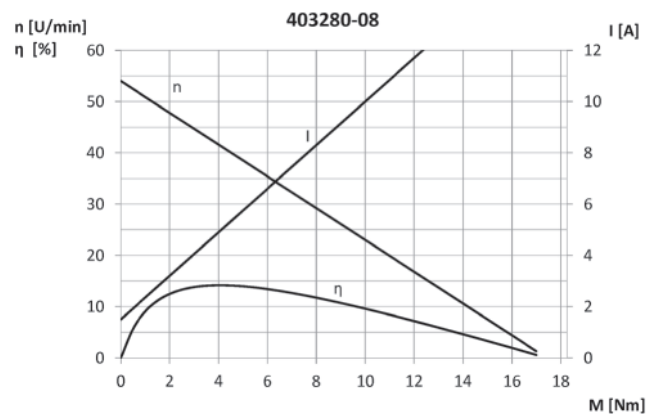
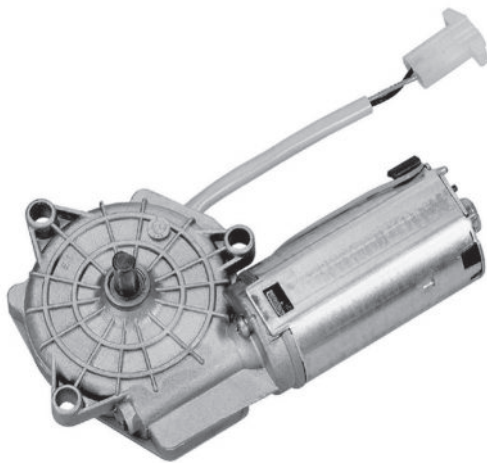
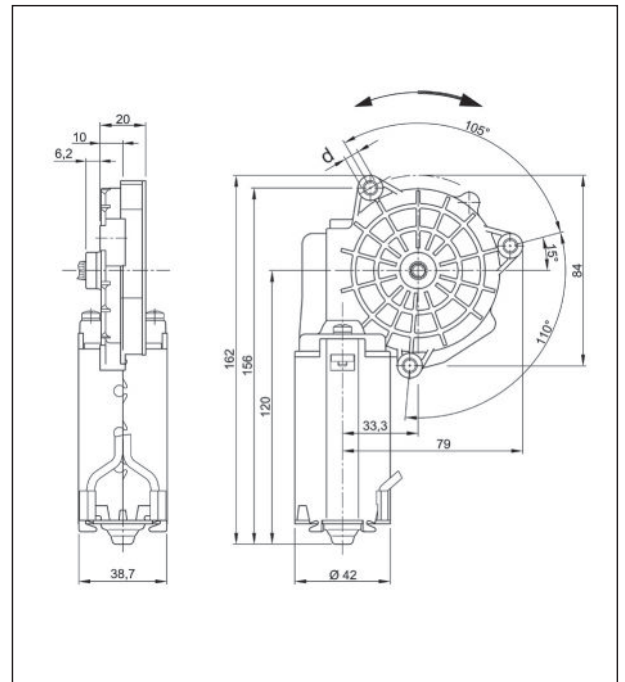
- I Flachsteckerenden
4,8 x 0,8 DIN 46 244
- II Flachsteckerenden
6,3 x 0,8 DIN 46 244

Baureihe SWMP

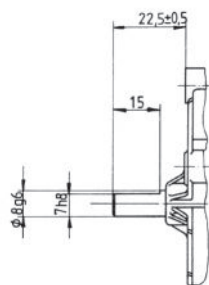
Motortyp 403280-08

Technische Daten

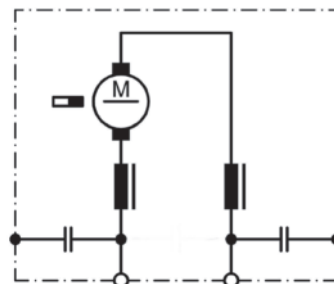
Nennspannung	U_N	[Volt]	24
Leerlaufdrehzahl	n_0	[min ⁻¹]	54
Nenn Drehmoment	M_N	[Nm]	2,00
Einschaltdauer		%	
Ein		[min]	
Anlaufmoment	M_A	[Nm]	16,50
Getriebeübersetzung			85
Ankerwiderstand	2Lamellen	R	mOhm 3300
	4Lamellen	R	mOhm 2800
Zahnradwerkstoff			Kunststoff
Hall IC			
Impulse/Umdrehung Antriebswelle			
Ausgangskanäle			
Bemerkung			d=7,5
Schutzart			IP30
Gewicht		[kg]	0,71



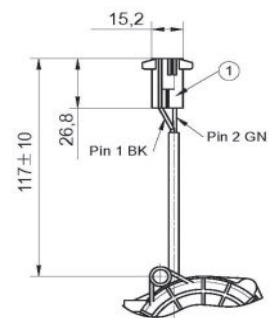
Abtriebswelle W45



Schaltbild S30



Anschluss K403280-08



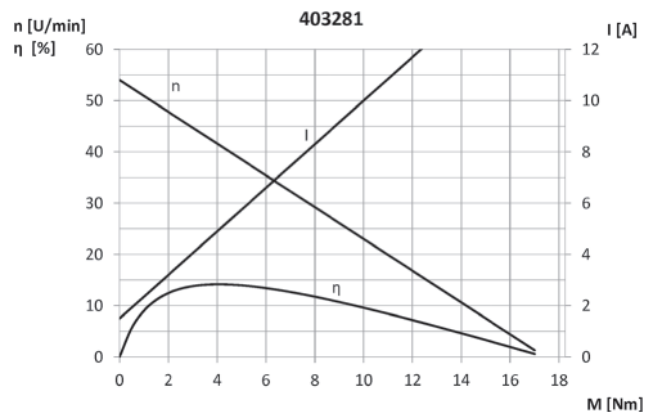
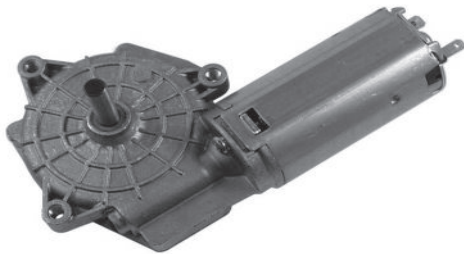
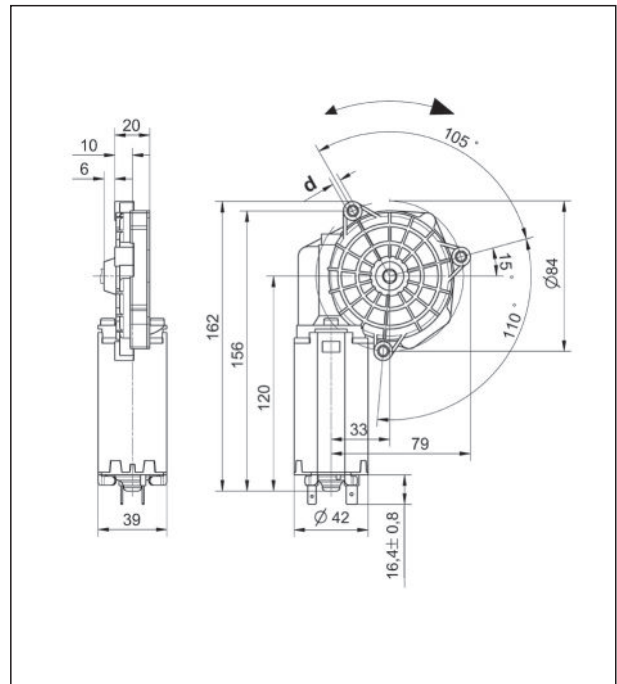
① Steckergehäuse AMP 151679-0
Gegenstecker AMP 151680-0

Baureihe SWMP

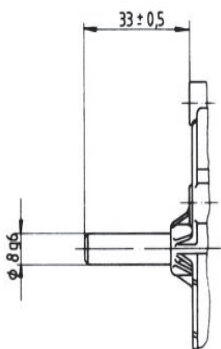
Motortyp 403281

Technische Daten

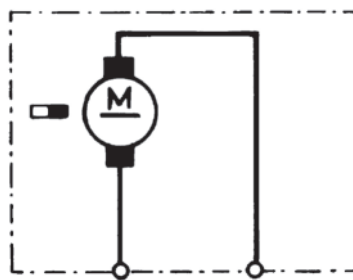
Nennspannung	U_N	[Volt]	24
Leerlaufdrehzahl	n_0	[min ⁻¹]	52
Nennmoment	M_N	[Nm]	2,00
Einschaltdauer		%	
Ein		[min]	
Anlaufmoment	M_A	[Nm]	14,00
Getriebeübersetzung			85:1
Ankerwiderstand	2Lamellen	R	mOhm 2600
	4Lamellen	R	mOhm 2000
Zahnradwerkstoff			Kunststoff
Hall IC			
Impulse/Umdrehung Antriebswelle			
Ausgangskanäle			
Bemerkung		d=M6; Kugellager	
Schutzart			IP30
Gewicht		[kg]	0,71



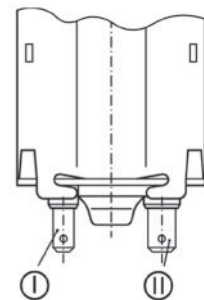
Abtriebswelle W13



Schaltbild S28



Anschluss K117



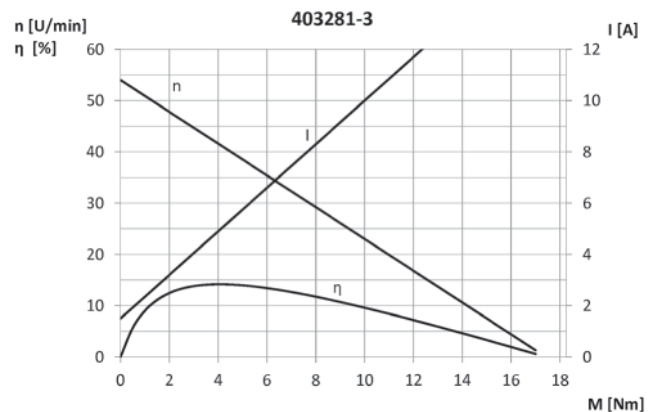
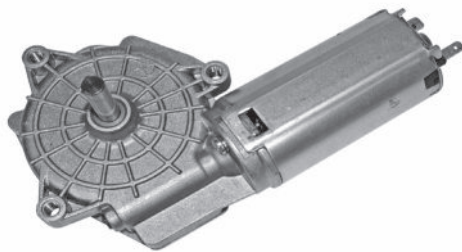
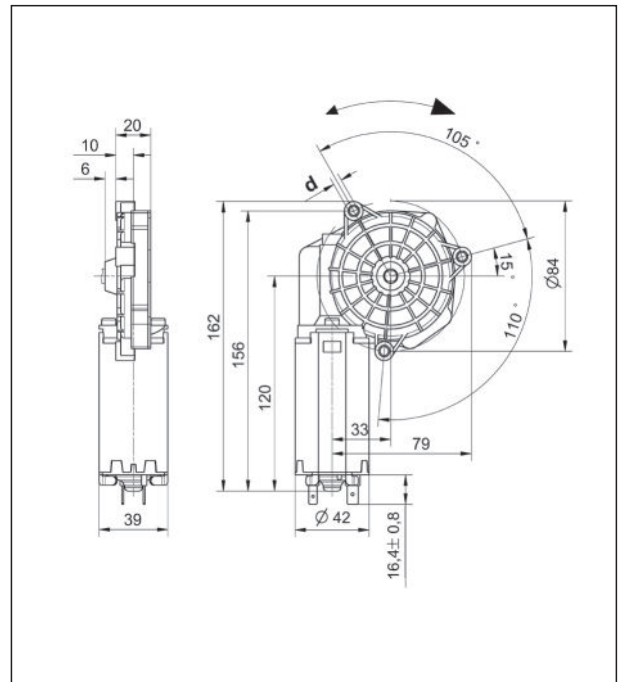
- I Flachsteckerenden
4,8 x 0,8 DIN 46 244
- II Flachsteckerenden
6,3 x 0,8 DIN 46 244

Baureihe SWMP

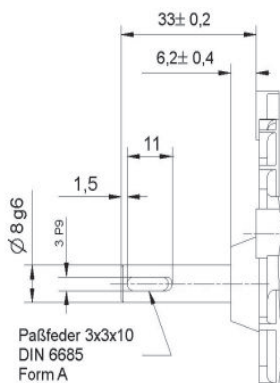
Motortyp 403281-3

Technische Daten

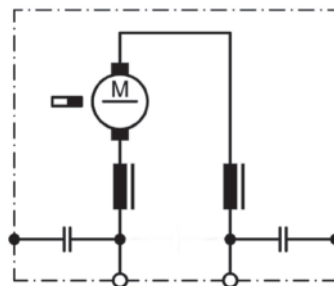
Nennspannung	U_N	[Volt]	24
Leerlaufdrehzahl	n_0	[min ⁻¹]	52
Nenn Drehmoment	M_N	[Nm]	2,00
Einschaltdauer		%	
Ein		[min]	
Anlaufmoment	M_A	[Nm]	10,00
Getriebeübersetzung			85:1
Ankerwiderstand	2Lamellen	R	mOhm 2600
	4Lamellen	R	mOhm 2000
Zahnradwerkstoff			Kunststoff
Hall IC			
Impulse/Umdrehung Antriebswelle			
Ausgangskanäle			
Bemerkung		d = M6; Kugellager	
Schutzart			IP30
Gewicht		[kg]	0,71



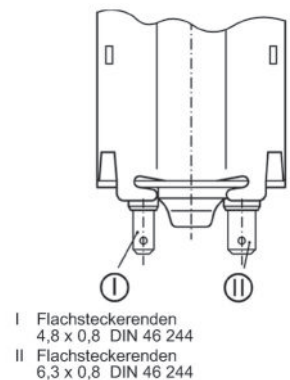
Abtriebswelle W403281-3



Schaltbild S30



Anschluss K117

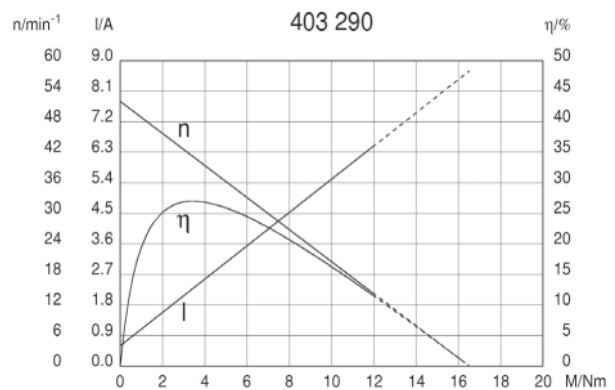
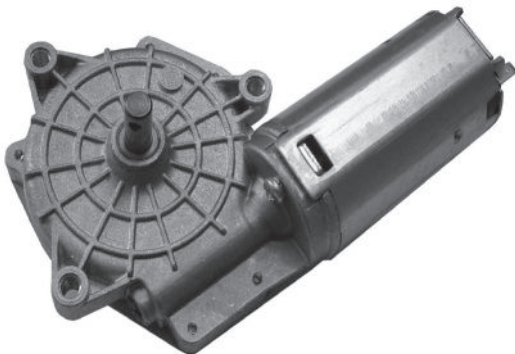
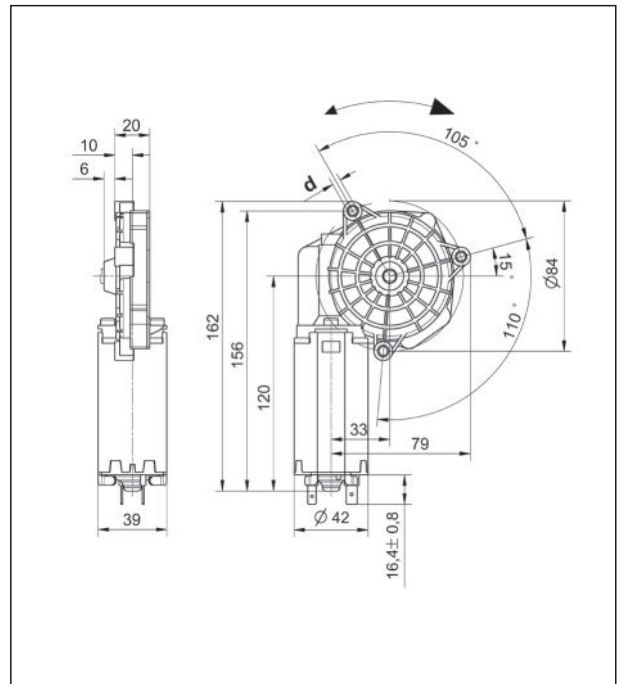


Baureihe SWMP

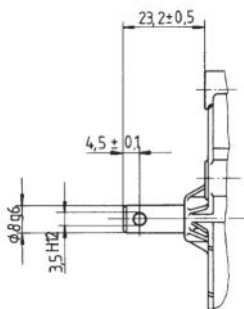
Motortyp 403290

Technische Daten

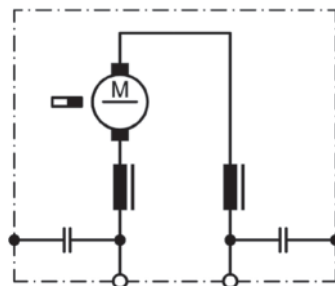
Nennspannung	U_N	[Volt]	24	
Leerlaufdrehzahl	n_0	[min ⁻¹]	52	
Nennmoment	M_N	[Nm]	2,00	
Einschaltdauer		%		
Ein		[min]		
Anlaufmoment	M_A	[Nm]	14,00	
Getriebeübersetzung			85:1	
Ankerwiderstand	2Lamellen	R	mOhm	3300
	4Lamellen	R	mOhm	2800
Zahnradwerkstoff				Kunststoff
Hall IC				
Impulse/Umdrehung Antriebswelle				
Ausgangskanäle				
Bemerkung			d=M6; Kugellager	
Schutzart				IP30
Gewicht		[kg]		0,71



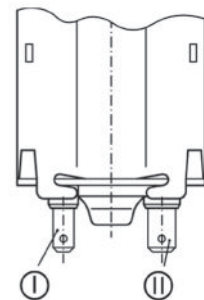
Abtriebswelle W16



Schaltbild S30



Anschluss K117

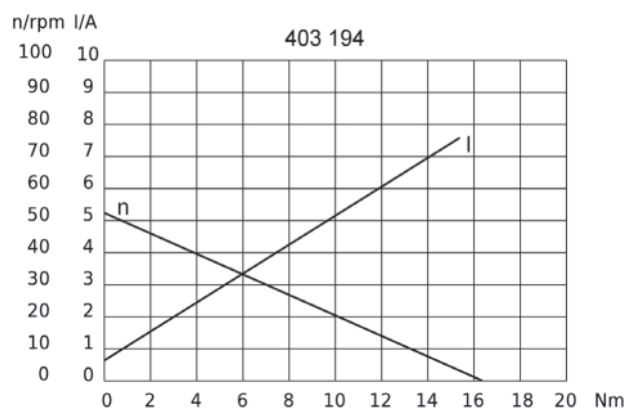
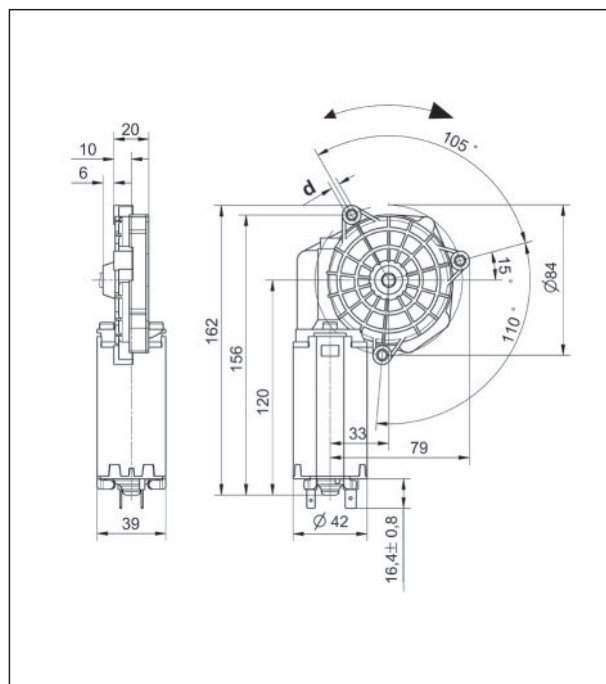


- I Flachsteckerenden
4,8 x 0,8 DIN 46 244
- II Flachsteckerenden
6,3 x 0,8 DIN 46 244

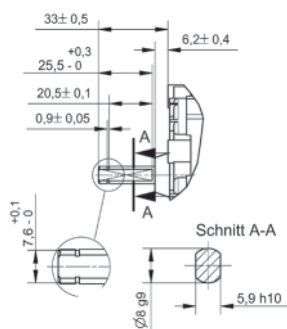
Baureihe SWMP

Motortyp 403194

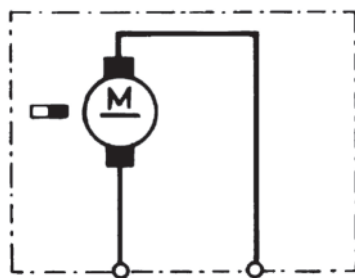
Technische Daten			
Nennspannung	U_N	[Volt]	24
Leerlaufdrehzahl	n_0	[min ⁻¹]	50
Nenn Drehmoment	M_N	[Nm]	2,00
Einschaltdauer		%	
Ein		[min]	
Anlaufmoment	M_A	[Nm]	12,00
Getriebeübersetzung			85:1
Ankerwiderstand	2Lamellen	R	mOhm 3300
	4Lamellen	R	mOhm 2800
Zahnradwerkstoff			Kunststoff
Hall IC			
Impulse/Umdrehung Antriebswelle			
Ausgangskanäle			
Bemerkung		d=M6	
Schutzart			IP30
Gewicht		[kg]	0,71



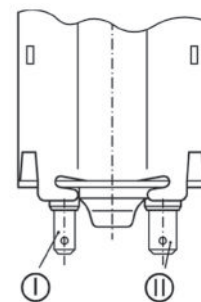
Abtriebswelle W171



Schaltbild S28



Anschluss K117



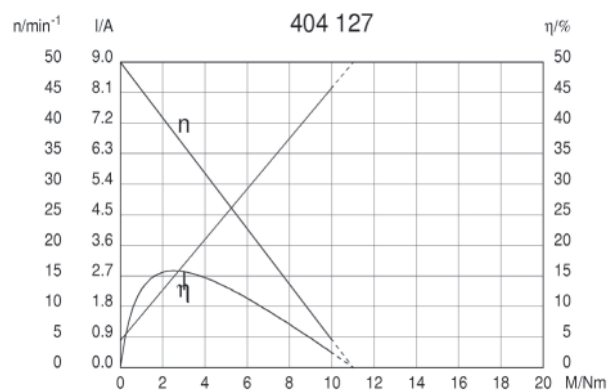
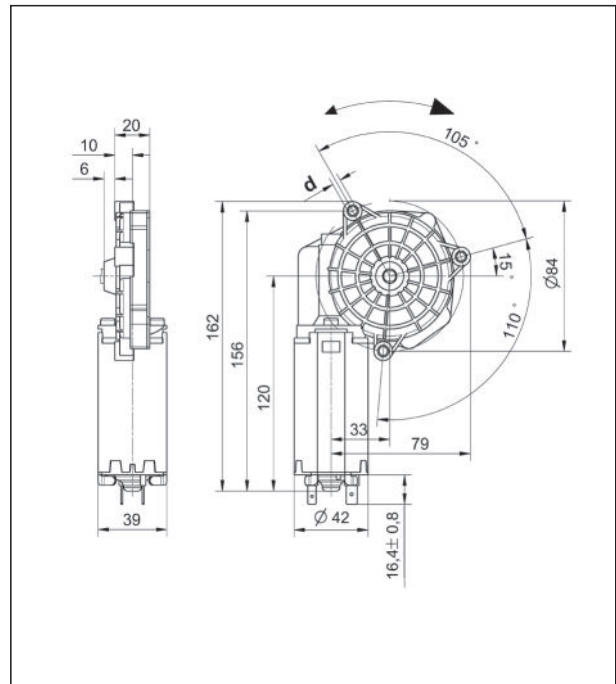
- I Flachsteckerenden 4,8 x 0,8 DIN 46 244
- II Flachsteckerenden 6,3 x 0,8 DIN 46 244

Baureihe SWMP

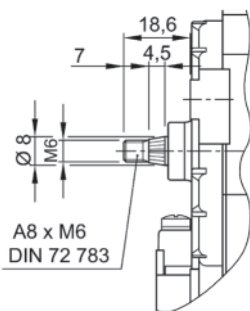
Motortyp 404127

Technische Daten

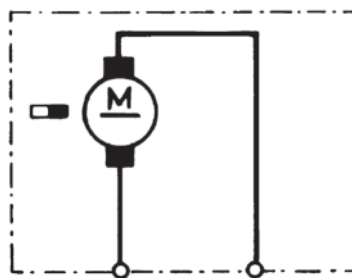
Nennspannung	U_N	[Volt]	24
Leerlaufdrehzahl	n_0	[min ⁻¹]	50
Nennmoment	M_N	[Nm]	2,00
Einschaltdauer		%	
Ein		[min]	
Anlaufmoment	M_A	[Nm]	10,00
Getriebeübersetzung			85:1
Ankerwiderstand	2Lamellen	R	mOhm
	4Lamellen	R	mOhm
Zahnradwerkstoff			Kunststoff
Hall IC			
Impulse/Umdrehung Antriebswelle			
Ausgangskanäle			
Bemerkung		d=M6; Kugellager	
Schutzart			IP30
Gewicht		[kg]	0,710



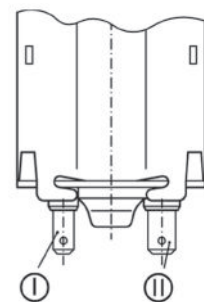
Abtriebswelle W22



Schaltbild S28



Anschluss K117

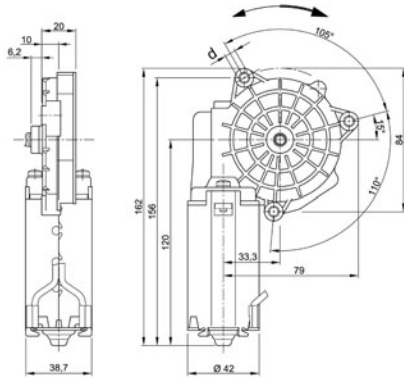


- I Flachsteckerenden
4,8 x 0,8 DIN 46 244
- II Flachsteckerenden
6,3 x 0,8 DIN 46 244

Series SWMP

Motor type 403 279

Design Data	
Commutation	Brushed
Direction of rotation	Bi-directional
Bearing type	



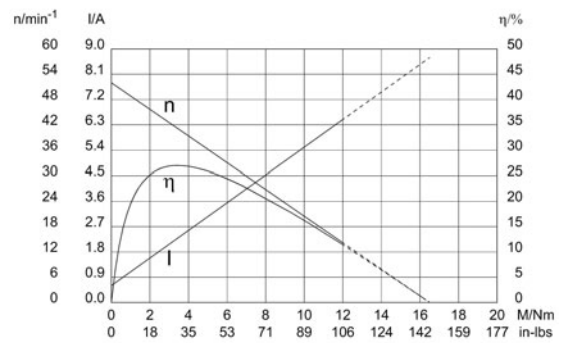
Performance data		
Rated voltage [V]	U_N	24
Nominal torque [Nm]	M_N	2.00
No-load speed [min^{-1}]	n_0	54.0
Nominal power [W]	P_N	9.94
Nominal current [A]	I_N	1.5
Nominal force [kN]	F_N	0.00
Duty cycle		s1

Sensor data	
Pulses	0
Output channels	0

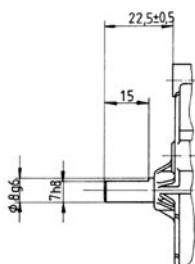
Other data	
Gear ratio	85/1
Gear wheel material	Plastic
Suppression components	7.5 μ H, 47nF
Enclosure class	IP30
Weight [kg]	0.710

Remarks: d = 7.5mm, Ball bearing

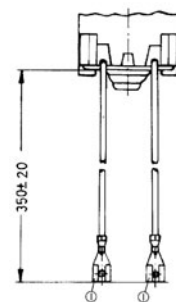
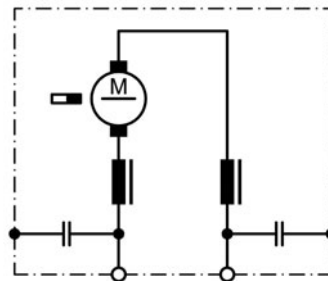
Motor picture



Output shaft drawing (W), Wiring diagrams (S) and Connector layout (K)



S 30

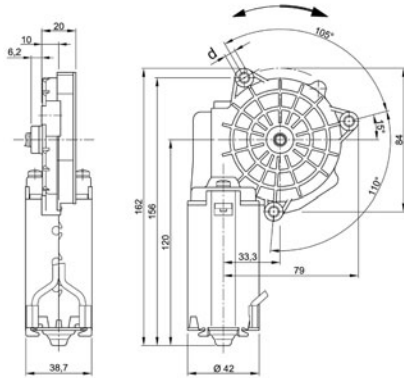


Spade connector 4.8 DIN 46 247

Series SWMP

Motor type 403 280

Design Data	
Commutation	Brushed
Direction of rotation	Bi-directional
Bearing type	



Performance data		
Rated voltage [V]	U_N	24
Nominal torque [Nm]	M_N	2.00
No-load speed [min^{-1}]	n_0	52.0
Nominal power [W]	P_N	9.57
Nominal current [A]	I_N	0.0
Nominal force [kN]	F_N	0.00
Duty cycle		s1

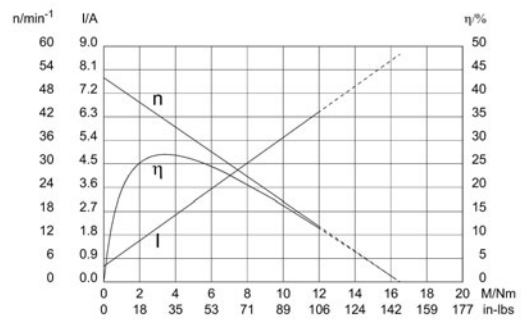
Sensor data	
Pulses	0
Output channels	0

Other data	
Gear ratio	85/1
Gear wheel material	Plastic
Suppression components	
Enclosure class	IP30
Weight [kg]	0.710

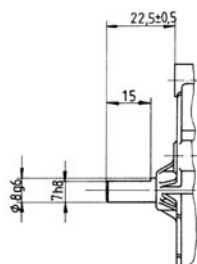
Remarks: d = 7.5mm, Ball bearing

Characteristic curves

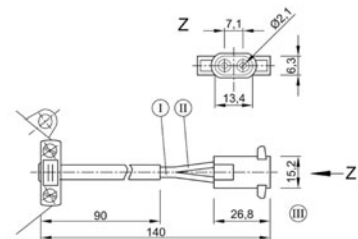
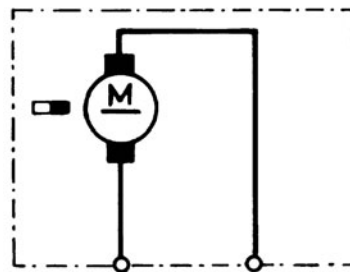
Motor picture



Output shaft drawing (W), Wiring diagrams (S) and Connector layout (K)



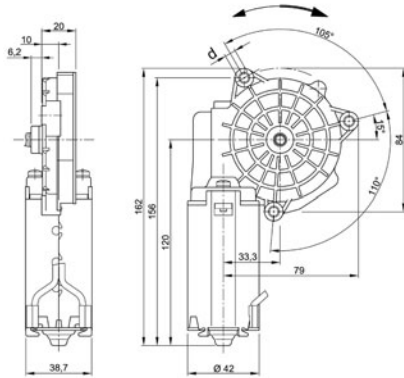
S 28



Series SWMP

Motor type 403 281

Design Data	
Commutation	Brushed
Direction of rotation	Bi-directional
Bearing type	



Performance data		
Rated voltage [V]	U_N	24
Nominal torque [Nm]	M_N	2.00
No-load speed [min^{-1}]	n_0	52.0
Nominal power [W]	P_N	9.34
Nominal current [A]	I_N	1.5
Nominal force [kN]	F_N	0.00
Duty cycle		s1

Sensor data	
Pulses	0
Output channels	0

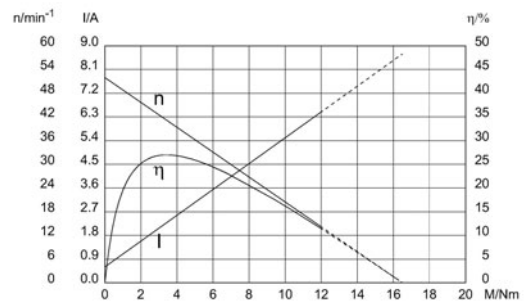
Other data	
Gear ratio	85/1
Gear wheel material	Plastic
Suppression components	
Enclosure class	IP30
Weight [kg]	0.710

Remarks: d = M6, Ball bearing

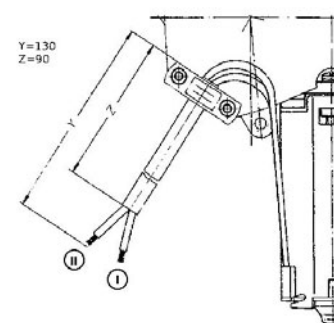
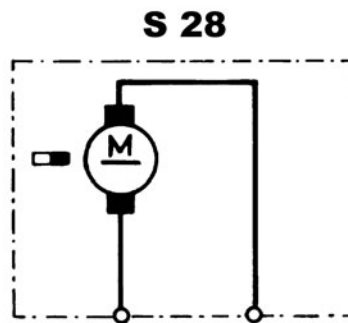
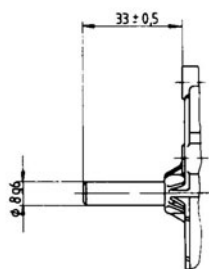
Motor picture



Characteristic curves



Output shaft drawing (W), Wiring diagrams (S) and Connector layout (K)

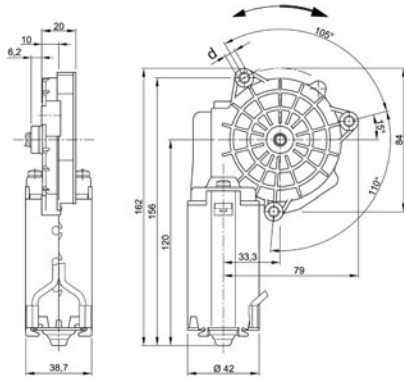


I: green
II: black

Series SWMP

Motor type 403 290

Design Data	
Commutation	Brushed
Direction of rotation	Bi-directional
Bearing type	



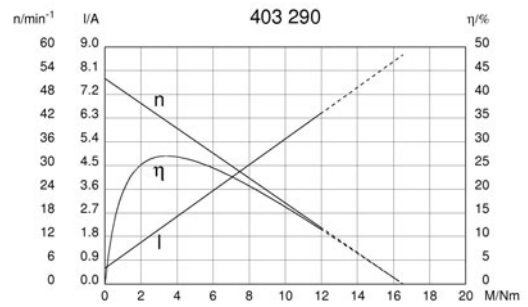
Performance data		
Rated voltage [V]	U_N	24
Nominal torque [Nm]	M_N	2.00
No-load speed [min^{-1}]	n_0	52.0
Nominal power [W]	P_N	9.34
Nominal current [A]	I_N	1.5
Nominal force [kN]	F_N	0.00
Duty cycle		s1

Sensor data	
Pulses	0
Output channels	0

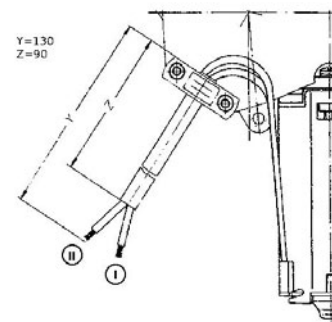
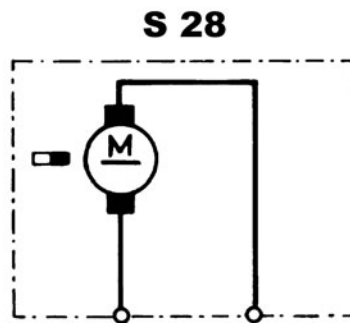
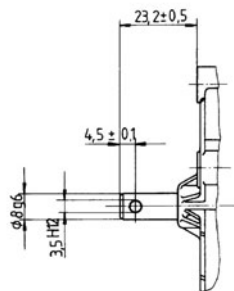
Other data	
Gear ratio	85/1
Gear wheel material	Plastic
Suppression components	
Enclosure class	IP30
Weight [kg]	0.710

Remarks: d = M6, Ball bearing

Motor picture



Output shaft drawing (W), Wiring diagrams (S) and Connector layout (K)



I: green
II: black

Series SWMP

Motor type 403 304

Design Data	
Commutation	Brushed
Direction of rotation	Bi-directional
Bearing type	

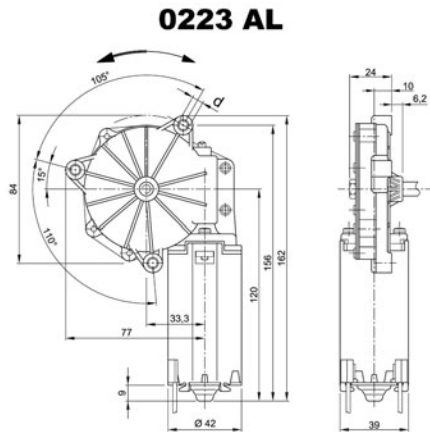
Performance data		
Rated voltage [V]	U_N	24
Nominal torque [Nm]	M_N	1.30
No-load speed [min^{-1}]	n_0	110.0
Nominal power [W]	P_N	12.2
Nominal current [A]	I_N	2.6
Nominal force [kN]	F_N	0.00
Duty cycle		s1

Sensor data	
Pulses	0
Output channels	0

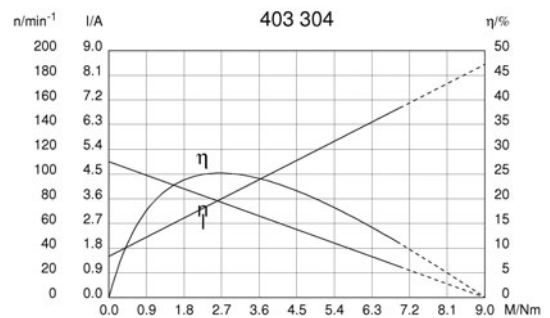
Other data	
Gear ratio	83/2
Gear wheel material	Plastic
Suppression components	
Enclosure class	IP30
Weight [kg]	0.710

Remarks: d = M6, Ball bearing

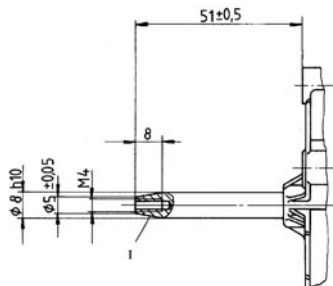
Characteristic curves



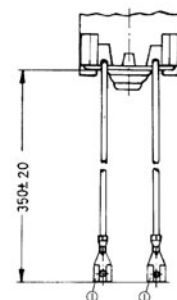
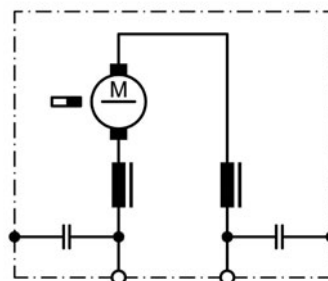
Motor picture



Output shaft drawing (W), Wiring diagrams (S) and Connector layout (K)



S 30



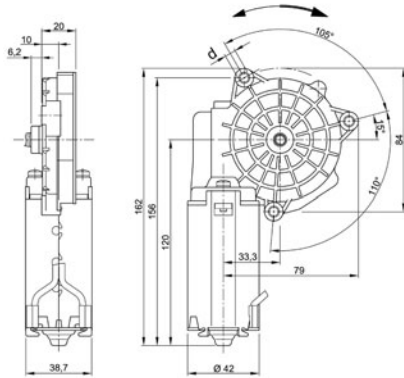
I: Cone 1:4

Spade connector 4.8 DIN 46 247

Series SWMP

Motor type 403 712

Design Data	
Commutation	Brushed
Direction of rotation	Bi-directional
Bearing type	



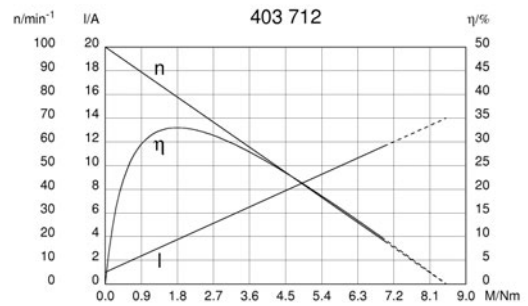
Performance data		
Rated voltage [V]	U_N	12
Nominal torque [Nm]	M_N	1.30
No-load speed [min^{-1}]	n_0	100.0
Nominal power [W]	P_N	11.1
Nominal current [A]	I_N	3.0
Nominal force [kN]	F_N	0.00
Duty cycle		s1

Sensor data	
Pulses	0
Output channels	0

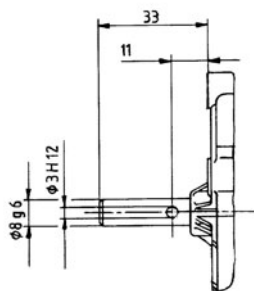
Other data	
Gear ratio	83/2
Gear wheel material	Plastic
Suppression components	
Enclosure class	IP30
Weight [kg]	0.710

Remarks: d = M6, Ball bearing

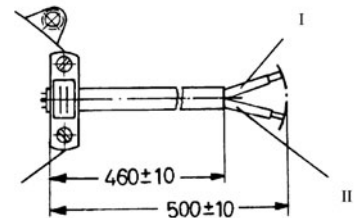
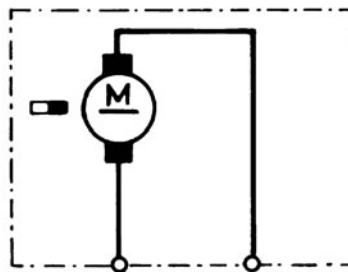
Motor picture



Output shaft drawing (W), Wiring diagrams (S) and Connector layout (K)



S 28

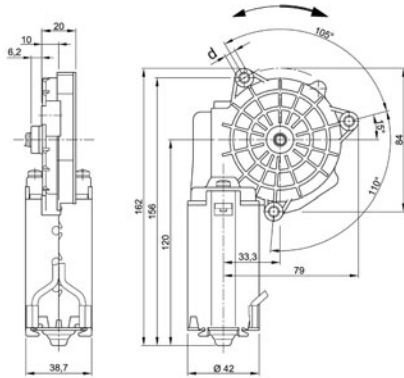


I: black
II: green

Series SWMP

Motor type 404 003

Design Data	
Commutation	Brushed
Direction of rotation	Bi-directional
Bearing type	



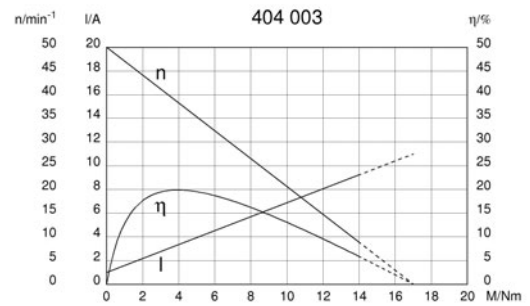
Performance data		
Rated voltage [V]	U_N	24
Nominal torque [Nm]	M_N	2.00
No-load speed [min^{-1}]	n_0	50.0
Nominal power [W]	P_N	8.98
Nominal current [A]	I_N	2.5
Nominal force [kN]	F_N	0.00
Duty cycle		s1

Sensor data	
Pulses	0
Output channels	0

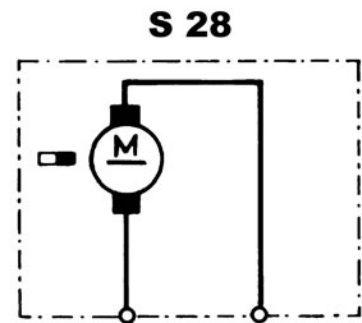
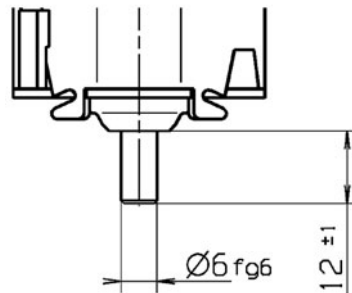
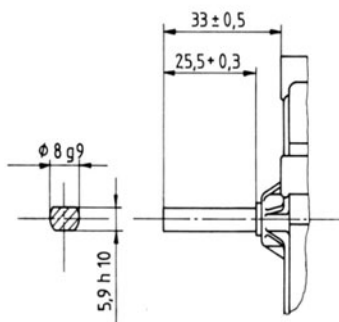
Other data	
Gear ratio	99/1
Gear wheel material	Resinbonded fabric
Suppression components	
Enclosure class	
Weight [kg]	0.710

Remarks: d = M6, Ball bearing

Motor picture



Output shaft drawing (W), Wiring diagrams (S) and Connector layout (K)



Global distributors

Belgium

Eisses Import B.V.
Admiraal Trompstraat 11
3115 HK Schiedam
Tel. +31 1 02 46 00 18
Fax +31 1 02 46 00 19
info@eissesbv.nl
www.eissesbv.nl

Denmark

Wald Antriebe GmbH
Hanns-Hoerbiger-Straße 1
29664 Walsrode
Tel. +49 51 61 48 63 20
Fax +49 51 61 48 63 233
info@waldantriebe.de
www.waldantriebe.de

Germany - West

101 automation GmbH
Schallbruch 19-21
42781 Haan
Tel. +49 21 29 37 63 50
Fax +49 21 29 37 63 59
sales@101automation.de
www.101automation.de

Germany - East

JBW GmbH
Jakob-Baumann-Straße 5
81249 Munich
Tel. +49 89 89 74 54 30
Fax +49 89 89 74 54 310
info@elektromotore.eu
www.elektromotore.eu

Germany - South

Ott GmbH & Co. KG
Baarstraße 3
78652 Deisslingen
Tel. +49 74 20 93 99 0
info@ott-antriebe.de
www.ott-antriebe.de

Germany - North

Wald Antriebe GmbH
Hanns-Hoerbiger-Straße 1
29664 Walsrode
Tel. +49 51 61 48 63 20
Fax +49 51 61 48 63 233
info@waldantriebe.de
www.waldantriebe.de

Finland

Oy Movetec Ab
Suokalliontie 9
01740 VANTAA
Tel. +35 89 52 59 23 0
Fax +358 9 5259 2333
info@movetec.fi
www.movetec.fi

France

Comotech Industries SAS
6 rue des Blonnières
CS 82441
44115 Haute Goulaine
Tel. +33 2 40 05 05 05
Fax +33 2 40 05 05 03
accueil@comotech.fr
www.comotech-industries.fr

United Kingdom

Electro Mechanical Systems Ltd
Eros House, Calleva Park, Aldermaston
Berkshire RG7 8LN
Tel. +44 11 89 81 73 91
Fax +44 11 89 81 76 13
info@ems-ltd.com
www.ems-limited.co.uk

India

Strategi Automation Solutions Pvt Ltd
Plot 25/B, Dodannakundi Indl Estate
560048 Bangalore
Tel. +91 99 80 56 38 50
Fax +91 80 41 16 30 47
arun@strategiautomation.com
www.strategiautomation.com

Israel

Mechatronics Ltd.
P.O. Box 3818
49130 Petach-Tikva
Tel. +97 2 39 28 88 88
Fax +97 2 39 28 88 80
office@mechatronics.co.il
www.mechatronics.co.il

Italy

Motech S.p.A.
Via Salvemini, 20
41122 Modena
Tel. +39 59 45 42 96
Fax +39 59 45 16 93
m.coda@motech-italia.com
www.motech-italia.com

Japan

Nidec-Shimpo Corp
1 Terada Kohtari, Nagaokakyo City
617-0833 Kyoto
Tel. +81 7 59 58 38 86
Fax +81 7 59 58 36 48
shinichi.takahashi@nidec-shimpo.co.jp
www.nidec-shimpo.co.jp

Canada

Drive Systems Group
7150 Torbram Road, Unit 1 & 2
L4T 3Z8 Mississauga, ON
Tel. +1 90 54 05 03 10
Fax +1 90 54 05 03 13
georger@drivesystemsgroup.com
www.drivesystemsgroup.com

The Netherlands

Eisses Import B.V.
Admiraal Trompstraat 11
3115 HK Schiedam
Tel. +31 1 02 46 00 18
Fax +31 1 02 46 00 19
info@eissesbv.nl
www.eissesbv.nl

Norway

Aratron AS
Bjernerudveien 17
1266 Oslo
Tel. +47 23 19 16 60
Fax +47 23 19 16 61
christer@aratron.no
www.aratron.no

Austria

Kwapil & Co GmbH
Kammelweg 9
1210 Vienna
Tel. +43 12 78 85 85
verkauf@kwapil.com
www.kwapil.com

Poland

WH Technologies Sp. z o o
ul. Pusta 3c
82-550 Prabuty
Tel. +48 58 67 75 571
Fax +48 58 67 75 574
whmotor@wh-tech.pl
www.whmotors.pl

Sweden

KG Knutsson AB
Hammarbacken 8
191 49 Sollentuna
Tel. +46 8 92 30 0
johan.nilsson@kgk.se
www.kgk.se

Switzerland

Antrimon Motion AG
Gotthardstraße 3
5630 Muri (AG)
Tel. +41 5 66 75 40 30
Fax +41 5 66 75 40 31
motion@antrimon.com
www.antrimon.com

Slovakia

Opis Engineering, s.r.o
Lucna 476
03202 Zavazna Poruba
Tel. +42 14 44 55 14 31 0
Fax +42 14 45 54 72 34
opis@opis.sk www.opis.sk

Spain

Útiles Cerámicos, S.A.
C/ San Jaime, 198 - Ap. 118
12550 - Almazora (Castellón)
Tel. +34 96 45 03 333
Fax +34 96 45 50 712
ucersa@ucersa.com
www.ucersa.com

Czech Republic

Opis Engineering k.s.
Selská 64
61400 Brno-Malomerice
Tel. +42 05 43 33 00 55
Gsm +42 07.34.15.08.08
info@opis.cz
www.opis.cz

Turkey

S-MIKRON Elektronik A.S.
Nilufer Ticaret Merkezi 66. Sokak No:6-8
16120 Nilufer-BURSA
Tel. +90 22 44 43 52 33
Fax +90 22 44 43 52 42 ahmetselim@s-
mikron.com.tr www.s-mikron.com.tr

USA

Power Electric
15300 25th Ave North, Suite 400
Plymouth MN 55447
Tel. +1 76 3 383 60 07
Fax +1 76 35 53 12 42 in-
fo@powerelectric.com
www.powerelectric.com



Nidec Motors & Actuators (Germany) GmbH
Seewiesenstraße 9
74321 Bietigheim-Bissingen

Tel. +49 (0) 71 42 / 508-0

sales@nidec-ma.com

www.nidec-ma.com