

- Information
- GMK · GML
- GMP
- GMA G
- GMP I
- GMP S
- GMP D
- GMP G
- SWMP
- DCK31
- DCK35**
- SW2L
- SWVV
- SWV G
- SW3K

DCK35

As 12-volt and 24-volt motor with Interference suppression and hall sensors



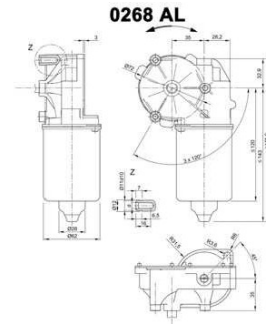
Technical description

Applications

Motor housing	Sheet steel deep drawn & protected against corrosion
Magnetic field	Permanent magnet
Type of transmission	Worm gear transmission
Transmission housing	Zinc die casting
Gearwheel material	Plastic
Transmission lubrication	Grease, permanent lubrication
Mechanical interface	Drive shaft
Electrical interface	Plug
Sensor	Optional
Thermal protection	Optional
Interference suppression	Optional

- Industry**
- Building technology, mechanical engineering
- Automobile**
- Sliding door adjustment, tailgate adjustment

Design Data	
Commutation	Brushed
Direction of rotation	Bi-directional
Bearing type	A:Ball - B:Sleeve



Motor picture



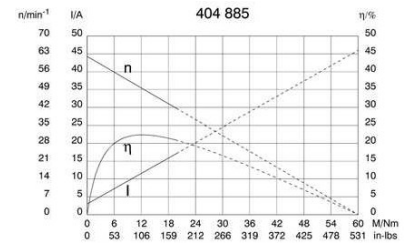
Performance data		
Rated voltage [V]	U_N	24
Nominal torque [Nm]	M_N	5.00
No-load speed [min^{-1}]	n_0	62.0
Nominal power [W]	P_N	29.8
Nominal current [A]	I_N	5.5
Nominal force [kN]	F_N	0.00
Duty cycle		s1

Sensor data	
Pulses	63
Output channels	2

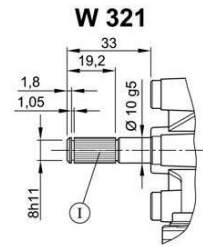
Other data	
Gear ratio	63/1
Gear wheel material	plastic
Suppression components	3.5 μ H
Enclosure class	IP 30
Weight [kg]	1.250

Remarks: d = for thread-forming screw M6 DIN ISO 965-2

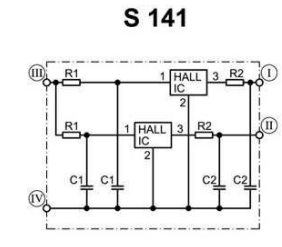
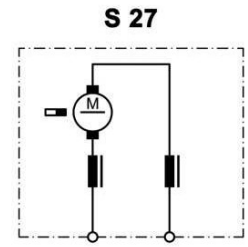
Characteristic curves



Output shaft drawing (W), Wiring diagrams (S) and Connector layout (K)



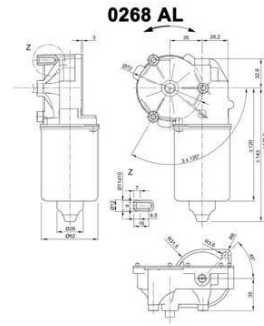
I serration (rolled): no of teeth 28, pitch circle dia 9 mm, tip circle dia 9.6 mm, root circle dia 8.26 mm space width angle 60°- go/no go gauge Frenco 33906 - www.frenco.de



I Hall-IC A1, terminal 3
 II Hall-IC A2, terminal 4
 III Hall-IC +, terminal 5
 IV Hall-IC -, terminal 6

Design Data	
Commutation	Brushed
Direction of rotation	Bi-directional
Bearing type	A:Ball - B:Sleeve

Performance data		
Rated voltage [V]	U_N	24
Nominal torque [Nm]	M_N	6.00
No-load speed [min^{-1}]	n_0	50.0
Nominal power [W]	P_N	28.7
Nominal current [A]	I_N	4.0
Nominal force [kN]	F_N	0.00
Duty cycle		s1



Sensor data	
Pulses	0
Output channels	0

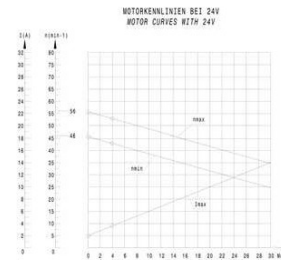
Other data	
Gear ratio	63/1
Gear wheel material	plastic
Suppression components	3.5 μ H, 1nF
Enclosure class	IP 30
Weight [kg]	1.250

Remarks: d=for thread forming screws M6 DIN ISO 965-2

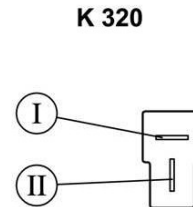
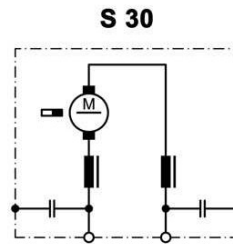
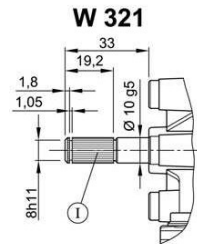
Motor picture



Characteristic curves



Output shaft drawing (W), Wiring diagrams (S) and Connector layout (K)

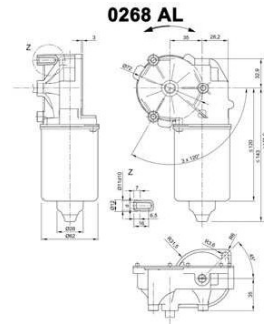


I serration (rolled): no of teeth 28, pitch circle dia 9 mm, tip circle dia 9.6 mm, root circle dia 8.26 mm space width angle 60°- go/no go gauge Frenco 33906 - www.frenco.de

Flat plug (DIN 46244) 6.3x0.8 mating with receptacle housing part#180907, drwg# C-180907& Receptacles for tabs, conductor cross section 0.5-1.5 sqmm (20-18AWG) part# 925603-x, drwg# 925603 www.tycoelectronics.com

Design Data	
Commutation	Brushed
Direction of rotation	Bi-directional
Bearing type	A:Ball - B:Sleeve

Performance data		
Rated voltage [V]	U_N	24
Nominal torque [Nm]	M_N	6.00
No-load speed [min^{-1}]	n_0	60.0
Nominal power [W]	P_N	29.3
Nominal current [A]	I_N	7.0
Nominal force [kN]	F_N	0.00
Duty cycle		s1



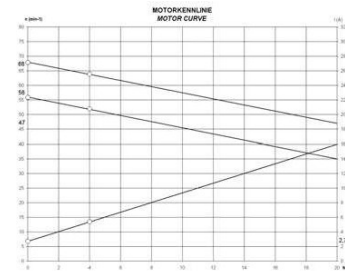
Sensor data	
Pulses	0
Output channels	0

Other data	
Gear ratio	63/1
Gear wheel material	plastic
Suppression components	3.5 μ H
Enclosure class	IP 30
Weight [kg]	1.376

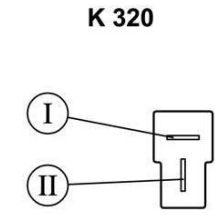
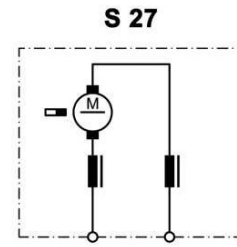
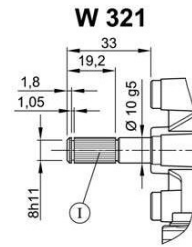
Motor picture



Remarks:
Characteristic curves



Output shaft drawing (W), Wiring diagrams (S) and Connector layout (K)

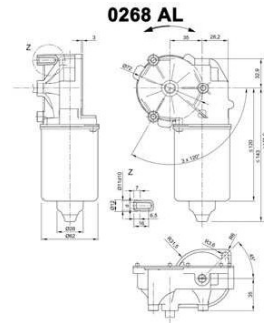


I serration (rolled): **no of teeth 28, pitch circle dia 9 mm, tip circle dia 9.6 mm, root circle dia 8.26 mm space width angle 60°- go/no go gauge** Frenco 33906 - www.frenco.de

Flat plug (DIN 46244) 6.3x0.8 mating with receptacle housing part#180907, drwg# C-180907& Receptacles for tabs, conductor cross section 0.5-1.5 sqmm (20-18AWG) part# 925603-x, drwg# 925603 www.tycoelectronics.com

Design Data	
Commutation	Brushed
Direction of rotation	Bi-directional
Bearing type	A: Ball - B: Sleeve

Performance data		
Rated voltage [V]	U_N	24
Nominal torque [Nm]	M_N	8.00
No-load speed [min^{-1}]	n_0	75.0
Nominal power [W]	P_N	37.7
Nominal current [A]	I_N	7.0
Nominal force [kN]	F_N	0.00
Duty cycle		s1

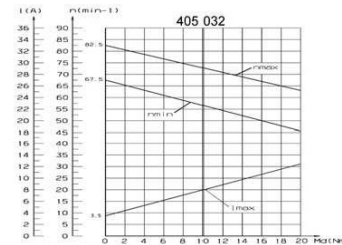


Sensor data	
Pulses	63
Output channels	1

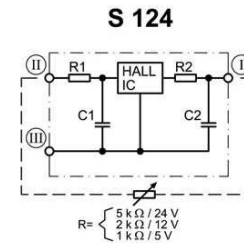
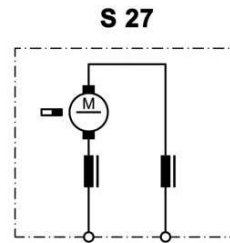
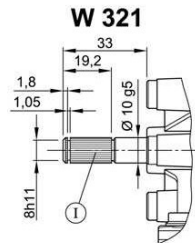
Other data	
Gear ratio	63/1
Gear wheel material	Plastic
Suppression components	3.5 μ H
Enclosure class	IP30
Weight [kg]	1.250

Remarks: d = for thread-forming screw M6 DIN ISO 965-2

Motor picture



Output shaft drawing (W), Wiring diagrams (S) and Connector layout (K)

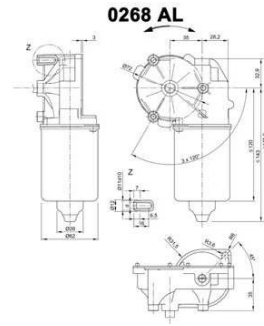


I serration (rolled): no of teeth 28, pitch circle dia 9 mm, tip circle dia 9.6 mm, root circle dia 8.26 mm space width angle 60°-go/no go gauge Frenco 33906 - www.frenco.de

I Terminal 3, A
 II Terminal 4, +
 III Terminal 5, -

$$R = \begin{cases} 5 \text{ k}\Omega / 24 \text{ V} \\ 2 \text{ k}\Omega / 12 \text{ V} \\ 1 \text{ k}\Omega / 5 \text{ V} \end{cases}$$

Design Data	
Commutation	Brushed
Direction of rotation	Bi-directional
Bearing type	A:Ball - B:Sleeve



Performance data		
Rated voltage [V]	U_N	24
Nominal torque [Nm]	M_N	8.00
No-load speed [min^{-1}]	n_0	53.0
Nominal power [W]	P_N	39.2
Nominal current [A]	I_N	6.0
Nominal force [kN]	F_N	0.00
Duty cycle		s1

Sensor data	
Pulses	91
Output channels	1

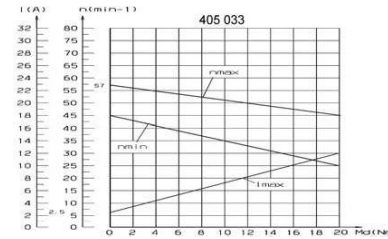
Other data	
Gear ratio	91/1
Gear wheel material	plastic
Suppression components	3.5 μ H, 1nF
Enclosure class	IP 30
Weight [kg]	1.250

Remarks: d=for thread forming screws M6 DIN ISO 965-2

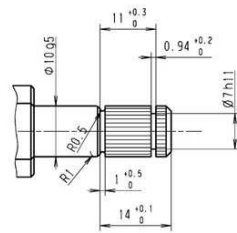
Motor picture



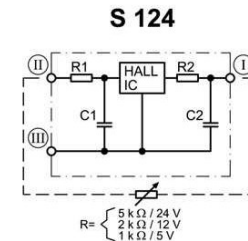
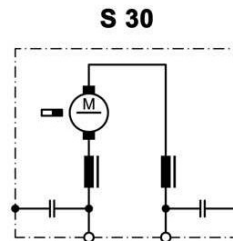
Characteristic curves



Output shaft drawing (W), Wiring diagrams (S) and Connector layout (K)



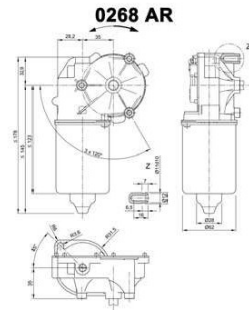
Splines: 8 x 10 (according to DIN 5481)
Output shaft length = 28mm



I Terminal 3, A
II Terminal 4, +
III Terminal 5, -

$R = \begin{cases} 5 \text{ k}\Omega / 24 \text{ V} \\ 2 \text{ k}\Omega / 12 \text{ V} \\ 1 \text{ k}\Omega / 5 \text{ V} \end{cases}$

Design Data	
Commutation	Brushed
Direction of rotation	Bi-directional
Bearing type	A:Ball - B:Sleeve



Motor picture



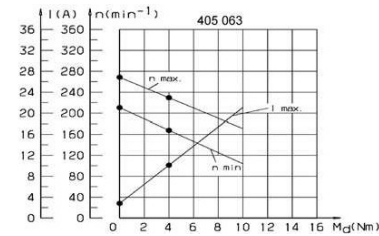
Performance data		
Rated voltage [V]	U_N	24
Nominal torque [Nm]	M_N	3.00
No-load speed [min^{-1}]	n_0	240.0
Nominal power [W]	P_N	65.6
Nominal current [A]	I_N	8.0
Nominal force [kN]	F_N	0.00
Duty cycle		s1

Sensor data	
Pulses	17.5
Output channels	2

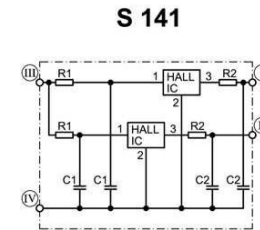
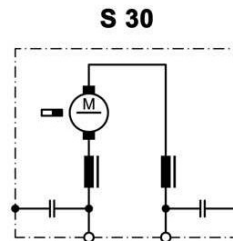
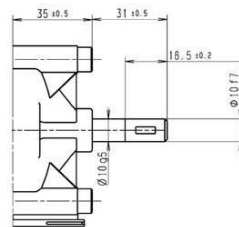
Other data	
Gear ratio	70/4
Gear wheel material	plastic
Suppression components	$6\mu\text{H}$, 1nF
Enclosure class	IP 30
Weight [kg]	1.366

Remarks: d=for thread forming screw M6 DIN ISO 965-2

Characteristic curves



Output shaft drawing (W), Wiring diagrams (S) and Connector layout (K)



- I Hall-IC A1, terminal 3
- II Hall-IC A2, terminal 4
- III Hall-IC +, terminal 5
- IV Hall-IC -, terminal 6

Global distributors

Belgium
Eissex Import B.V.
Admiraal Trompstraat 11
3115 HK Schiedam
Tel. +31 1 02 46 00 18
Fax +31 1 02 46 00 19
info@eissexbv.nl
www.eissexbv.nl

Denmark
Wald Antriebe GmbH
Hanns-Hoerbige-Straße 1
29664 Walsrode
Tel. +49 51 61 48 83 20
Fax +49 51 61 48 83 233
info@waldantriebe.de
www.waldantriebe.de

Germany - West
101 automation GmbH
Schallbruch 19-21
42781 Haan
Tel. +49 21 29 37 63 50
Fax +49 21 29 37 63 59
sales@101automation.de
www.101automation.de

Germany - East
JBW GmbH
Jakob-Baumann-Straße 5
81249 Munich
Tel. +49 89 89 74 54 30
Fax +49 89 89 74 54 310
info@elektromotore.eu
www.elektromotore.eu

Germany - South
Olt GmbH & Co. KG
Baarstraße 3
78652 Deislingen
Tel. +49 74 20 93 99 0
info@olt-antriebe.de
www.olt-antriebe.de

Germany - North
Wald Antriebe GmbH
Hanns-Hoerbige-Straße 1
29664 Walsrode
Tel. +49 51 61 48 83 20
Fax +49 51 61 48 83 233
info@waldantriebe.de
www.waldantriebe.de

Finland
Oy Movetec Ab
Suokallionie 9
01740 VANTAA
Tel. +35 89 52 59 23 0
Fax +358 9 5259 2333
info@movetec.fi
www.movetec.fi

France
Comotech Industries SAS
6 rue des Blondières
CS 82441
44115 Haute Goulaine
Tel. +33 2 40 05 05 05
Fax +33 2 40 05 05 03
accueil@comotech.fr
www.comotech-industries.fr

United Kingdom
Electro Mechanical Systems Ltd
Elico House, Calvea Park, Aldermaston
Berkshire RG7 8JN
Tel. +44 11 89 81 73 91
Fax +44 11 89 81 76 13
info@ems-ltd.com
www.ems-limited.co.uk

India
Strategi Automation Solutions Pvt Ltd
Plot 25/B, Dodannakundi Ind Estate
560048 Bangalore
Tel. +91 99 80 56 38 50
Fax +91 90 41 19 30 47
arun@strategiautomation.com
www.strategiautomation.com

Israel
Mechatronics Ltd.
P.O. Box 3918
49130 Petach-Tikva
Tel. +97 2 39 28 88 88
Fax +97 2 39 28 88 80
office@mechatronics.co.il
www.mechatronics.co.il

Italy
Motech S.p.A.
Via Salvini, 20
41122 Modena
Tel. +39 59 45 42 96
Fax +39 59 45 18 93
m.cotta@motech-italia.com
www.motech-italia.com

Japan
Nidec-Shimpo Corp
1 Tenede Kohari, Nagaokakyo City
617-0833 Kyoto
Tel. +81 7 59 58 38 86
Fax +81 7 59 58 38 48
shinichi.takahashi@nidec-shimpo.co.jp
www.nidec-shimpo.co.jp

Canada
Drive Systems Group
7150 Torbram Road, Unit 1 & 2
L4T 3Z8 Mississauga, ON
Tel. +1 90 54 05 03 10
Fax +1 90 54 05 03 13
georgar@drivesystemsgroup.com
www.drivesystemsgroup.com

The Netherlands
Eissex Import B.V.
Admiraal Trompstraat 11
3115 HK Schiedam
Tel. +31 1 02 46 00 18
Fax +31 1 02 46 00 19
info@eissexbv.nl
www.eissexbv.nl

Norway
Aratron AS
Bjernerudveien 17
1266 Oslo
Tel. +47 23 19 16 60
Fax +47 23 19 16 61
christor@aratron.no
www.aratron.no

Austria
Kwapil & Co GmbH
Kammellweg 9
1210 Vienna
Tel. +43 12 78 85 85
verkauf@kwapil.com
www.kwapil.com

Poland
WH Technologies Sp. z o.o.
ul. Pusta 3c
82-550 Prabuty
Tel. +48 58 67 75 571
Fax +48 58 67 75 574
whmotor@wh-tech.pl
www.whmotors.pl

Sweden
KG Knutsson AB
Hammarbacken 8
191 49 Sollentuna
Tel. +46 8 92 30 0
johan.nilsson@kgk.se
www.kgk.se

Switzerland
Antrimon Motion AG
Gothardsstraße 3
5830 Muri (AG)
Tel. +41 5 66 75 40 30
Fax +41 5 66 75 40 31
motion@antrimon.com
www.antrimon.com

Slovakia
Opis Engineering, s.r.o
Lucna 476
03202 Zavazna Poruba
Tel. +42 14 44 55 14 31 0
Fax +42 14 45 54 72 34
opis@opis.sk www.opis.sk

Spain
Utiles Cerámicos, S.A.
C/ San Jaime, 198 - Ap. 118
12550 - Almazora (Castellón)
Tel. +34 99 45 00 203
Fax +34 96 45 50 712
ucersa@ucersa.com
www.ucersa.com

Czech Republic
Opis Engineering k.s.
Selská 64
61400 Brno-Malomerice
Tel. +42 05 43 33 00 55
Gem +42 07 34 15 08 08
info@opis.cz
www.opis.cz

Turkey
S-MiKRON Elektronik A.S.
Nikuler Ticaret Merkezi 66, Sokak No:6-8
16120 Nilüfer-BURSA
Tel. +90 22 44 43 52 33
Fax +90 22 44 43 52 42
ahmetseilm@smikron.com.tr
www.smikron.com.tr

USA
Power Electric
15300 25th Ave North, Suite 400
Brynemouth MN 55447
Tel. +1 76 3 383 60 07
Fax +1 76 3 53 12 42
info@powerelectric.com
www.powerelectric.com



Nidec Motors & Actuators (Germany) GmbH
Seewiesenstraße 9
74321 Bietigheim-Bissingen

Tel. +49 (0) 71 42 / 508-0

sales@nidec-ma.com

www.nidec-ma.com