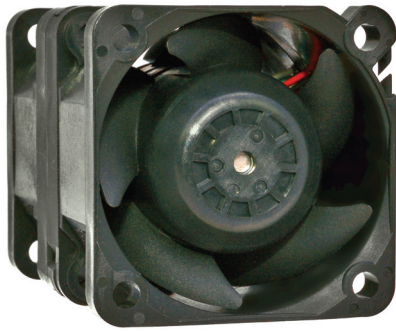
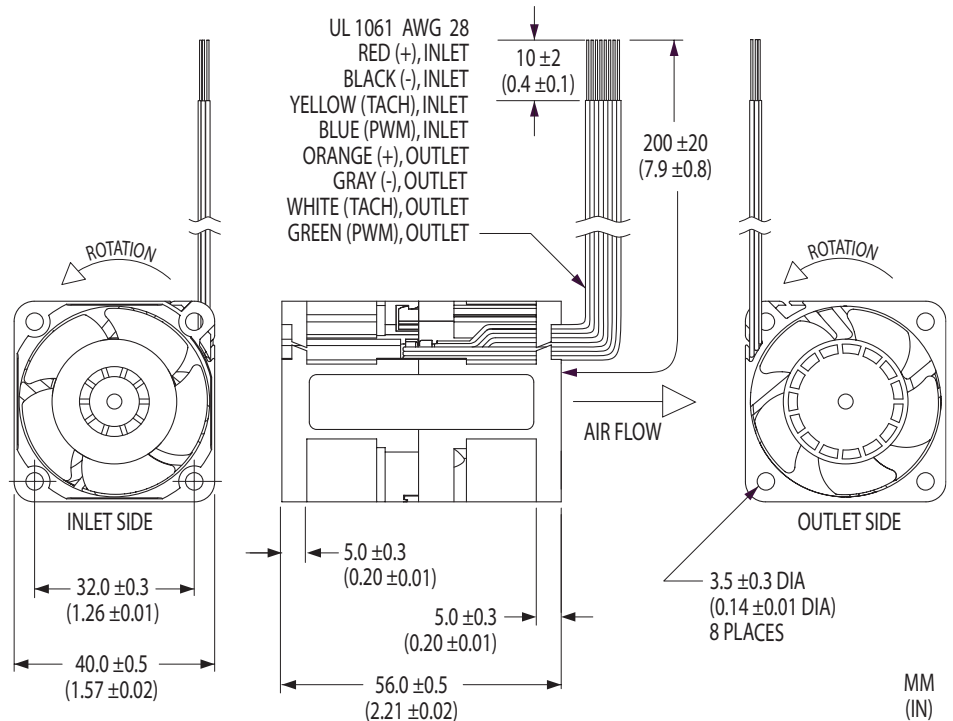


40x56mm



R40W CA Series

- ✓ Up to 25% Lower Power Requirement than Previous Designs
- ✓ Impeller and Motor Optimized for Improved Efficiency
- ✓ Permanently Lubricated Dual Ball Bearings

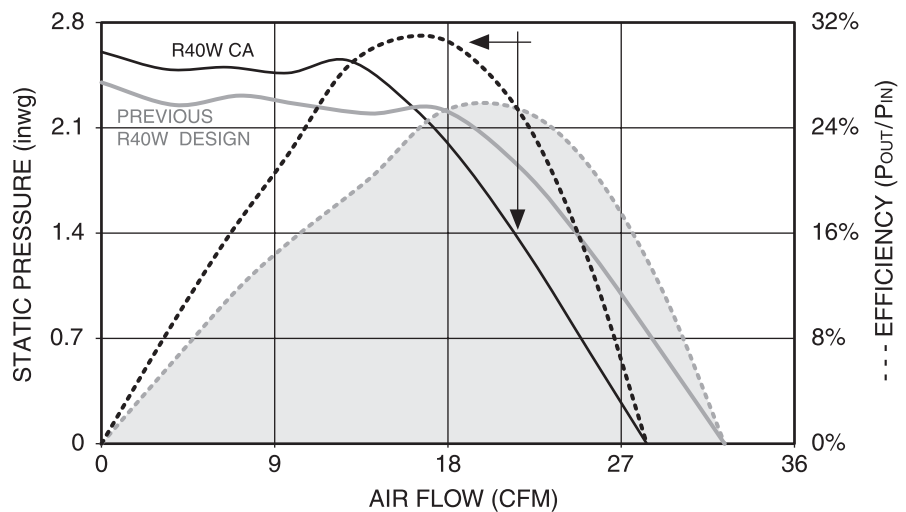


Efficiency Optimized Dual In-Line Counter-Rotating Fans

Model	Air Flow (CFM)	Max. Static Pressure (inwg)	Operating Voltage		Operating Current (A)	Input Power (W)	Fan Speed (rpm)	Sound Pressure (dBA)	Operating Temp.		L10 Life† (hours)
			Nominal (V)	Range (V)					Min. (°C)	Max. (°C)	
Speed-Stable											
R40W12BGCA-07	28	2.5	12	7.0-13.8	1.32	15.8	19200/17200	64.0	-10	+70	50,000
R40W12BHCA-07	25	2.2	12	7.0-13.8	0.95	11.4	18000/13450	60.0	-10	+70	—
Free-Running											
R40W12BGCA-57	28	2.5	12	7.0-13.8	1.32	15.8	19200/17200	64.0	-10	+70	50,000
R40W12BHCA-57	25	2.2	12	7.0-13.8	0.95	11.4	18000/13450	60.0	-10	+70	—

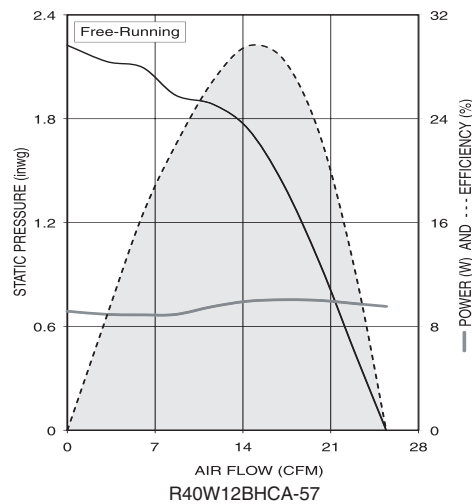
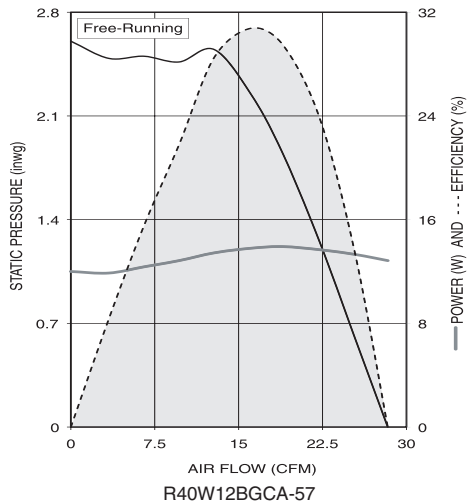
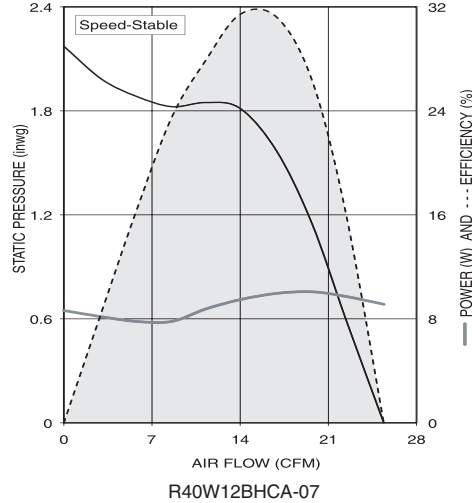
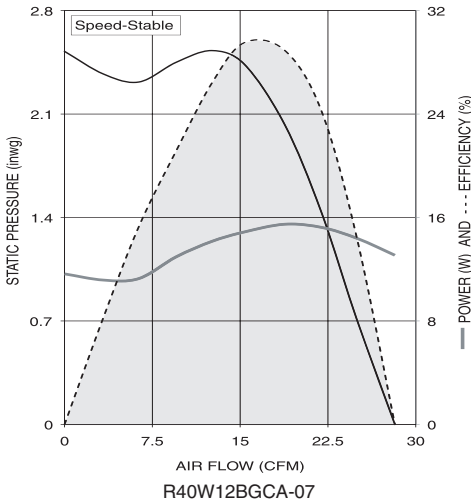
Air flow, current, speed and sound pressure ratings are at nominal operating voltage and zero static pressure. Current and power ratings are average expected values under those conditions. † L10 bearing life expectancy at T_A = +40°C. © UltraFlo is a registered trademark of Nidec Corporation.

EFFICIENCY GAIN
 — Where Needed Most —

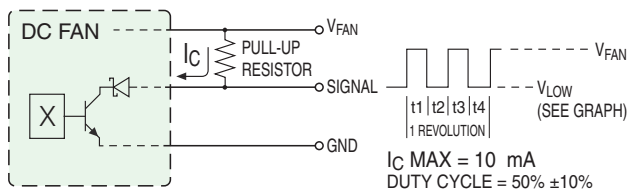




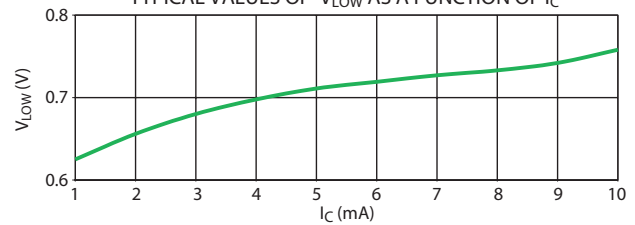
R40W CA Series



OPEN-COLLECTOR TACHOMETER



TYPICAL VALUES OF V_{LOW} AS A FUNCTION OF I_C



PULSE-WIDTH MODULATED SPEED CONTROL

