



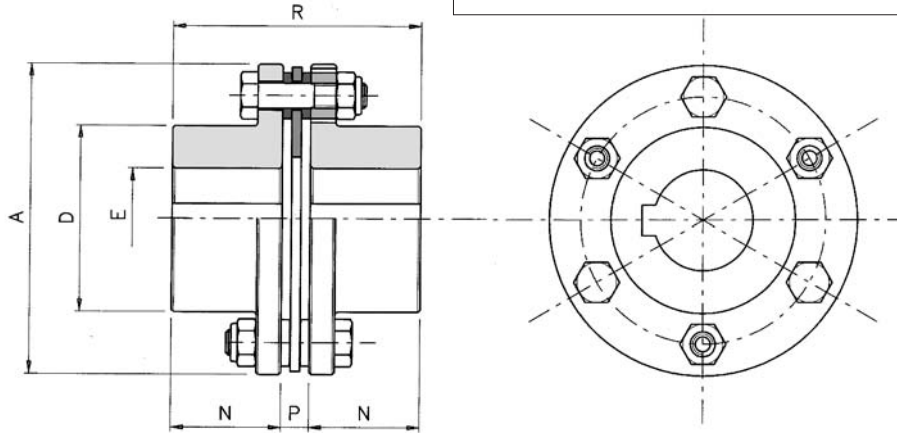
SPOJKY OMC / OMC DRIVING PARTS

GTR/6-S

JEDNODUCHÁ PEVNÁ SPOJKA SIMPLE TORSIONALLY RIGID COUPLING



VSE V NORMĚ UNI EN 10083/98 OCELI
IN FULL-TURNED UNI EN 10083/98 STEEL



✓ GTR/4-S (N°4 srouby/4 pins)

GTR/6-S: TECNICKÁ DATA - TECHNICAL SPECIFICATIONS

Velikost Sizes	Kr.moment Torque (Nm)		Axiální zatížení Axial load (Kg)	Hmotnost Weight (Kg)	Setravnost Inertia (Kgm ²)	Maximální rychlost Max speed (ot/min)	Vychýlení Misalignments			Tuhost Rigidity (Nm/rad·10 ³)
	Nom	Max					α °	X mm	K mm	
✓ 00	20	40	8	0,6	0,00095	30000	1°	1,00	-	47
✓ 0	40	80	10	1,6	0,00362	27500	1°	1,40	-	7,2
1	100	200	14	1,3	0,00070	25000	0° 45'	0,80	-	117
2	150	300	19	2,4	0,00200	22000	0° 45'	0,95	-	156
3	300	600	26	3,9	0,00400	20000	0° 45'	1,25	-	415
4	700	1400	34	6,3	0,00900	16000	0° 45'	1,45	-	970
5	1100	2200	53	10,4	0,01100	14000	0° 45'	1,65	-	1846
6	1700	3400	70	15,6	0,03900	12000	0° 45'	2,00	-	2242
7	2600	5200	79	24,8	0,08200	10000	0° 45'	2,25	-	3511
8	4000	8000	104	33	0,14030	8000	0° 45'	2,45	-	8991
9	7000	14000	115	42	0,26685	7500	0° 45'	2,55	-	11941
10	9000	18000	138	67	0,46936	6000	0° 45'	2,65	-	14154
11	12000	24000	279	94	0,75565	5500	0° 45'	2,95	-	15521
12	15000	30000	358	114	1,11372	5500	0° 45'	3,05	-	16409

POZNÁMKA: hmotnost a setravnost se vztahuje na spojku s maximálním otvorem
NOTE: weights and inertias refer to the complete coupling with maximum bore.

GTR/6-S: OBJEDNACÍ KÓDY A ROZMĚRY - CODES AND DIMENSIONS

Grand. Sizes	Codici Code	A	D	E H7 ø max	N	P	R
✓ 00	200805000000	67	33	23	25	6	56
✓ 0	200815000000	81	46	32	40	6.5	86.5
1	200825000000	80	45	32	36	8	80
2	200835000000	92	53	38	42	8	92
3	200845000000	112	65	45	46	10	102
4	200855000000	136	75	52	56	12	124
5	200865000000	162	92	65	66	13	145
6	200875000000	182	112	80	80	14	174
7	200885000000	206	130	90	92	15	199
8	200895000000	226	135	95	100	22	222
9	200925000000	252	155	110	110	25	245
10	200935000000	296	170	120	120	28	268
11	200945000000	318	195	138	140	32	312
12	200955000000	320	200	140	150	32	332

NOTA: La 7ª, 8ª, 9ª cifra del Codice indicano il diametro del Foro Finito di un semigtungto in mm (000 000 = Foro Grezzo)
NOTE: The 7th, 8th and 9th digits of the code indicate the Finished Bore diameter of a half-coupling in mm (000 000 = Pilot Bore).
NOTA: la 10ª, 11ª, 12ª cifra del Codice indicano il diametro del Foro Finito del secondo semigtungto in mm (000 000 = Foro Grezzo).
NOTE: The 10th, 11th and 12th digits of the code indicate the Finished Bore diameter of the second half-coupling in mm (000 000 = Pilot Bore).