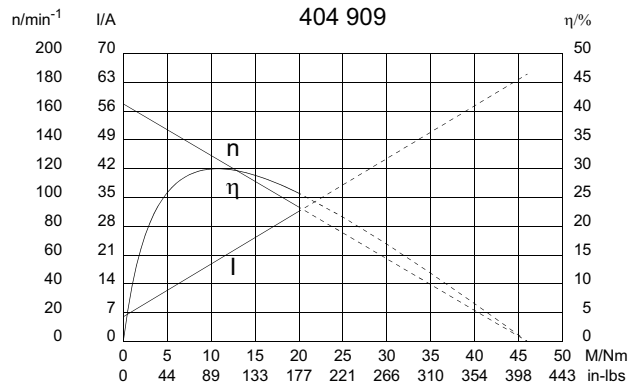
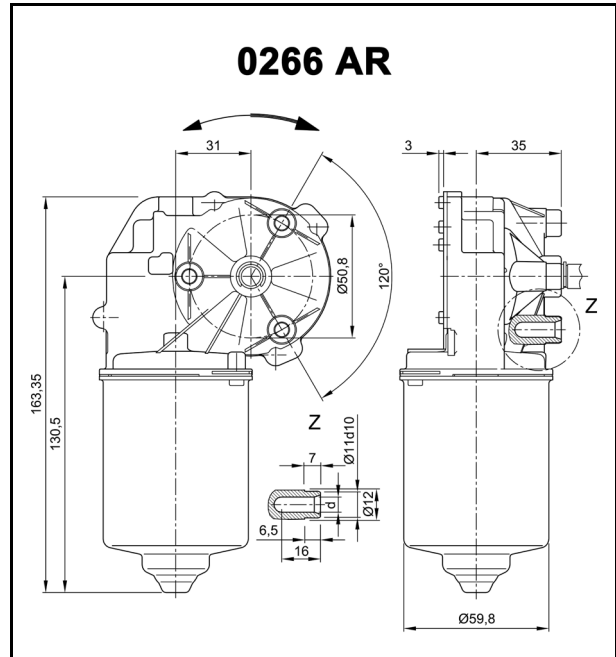
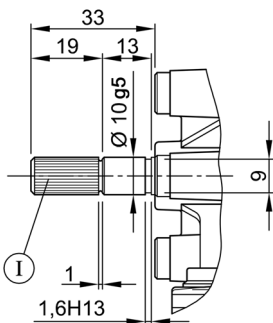


Technical Data

| | | | |
|-----------------------------|---|--|-------|
| Rated voltage | U_N | [Volt] | 24 |
| No-load speed | n_0 | [min ⁻¹] | 165 |
| Nominal torque | M_N | [Nm] | 4,00 |
| ON time | | % | |
| ON | | [min] | |
| Starting torque | M_A | [Nm] | 46,00 |
| Gear ratio | i | | 48/1 |
| Armature resistance, 2 bars | R | [m Ω] | |
| | R | [m Ω] | |
| Armature inductance, 2 bars | L | [mH] | |
| | L | [mH] | |
| Armature load inertia | J_R | [kgm ²] × 10 ⁻⁶ | |
| Gear wheel material | | bronze | |
| Hall IC | | | |
| Pulses/rev. drive shaft | | | |
| Output channels | | | |
| Remarks | d = for thread-forming screw M6 DIN ISO 965-2 | | |
| Enclosure class | | | IP 30 |
| Weight | | [kg] | 1,210 |

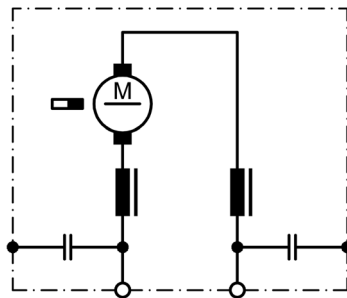


W 277

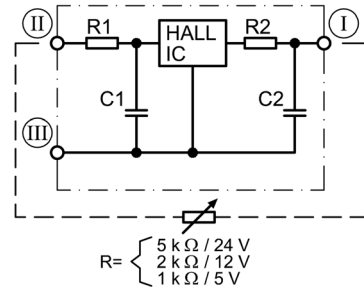


I Tapered splines 8 x 10 (similar DIN 5481)

S 30



S 124

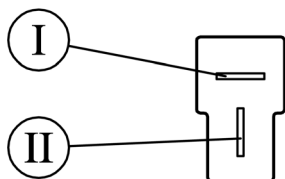


I Terminal 3, A
II Terminal 4, +
III Terminal 5, -

Series 0266 (DCK31)

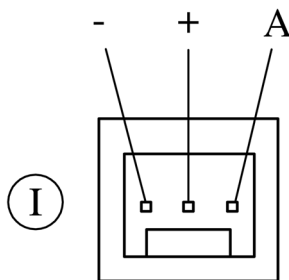
Motor type 404 909

K 320



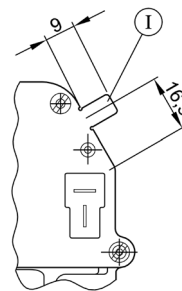
- I Blade terminals 6.3 x 0.8
DIN 46 244
- II Mating connector: Tyco 180907
with sleeve AMP 925603

K 326



- I Mating connector: Panduit CE100 F22 - 03

K 321



- I Ground connection
Blade terminal 6.3 x 0.8 DIN 46 244

Notes: