



PATENT
PENDING

553 FLEXTOP

Modular Belt

Movex®

www.movexii.com

553 PATENT PENDING

FLEXTOP



Movement options

553 FlexTop guarantees 360° freedom of movement.



Optimized system flexibility

553 FlexTop is based on your needs.



High spheres resistance

and high movement precision.



Superior Durability

and high working load guaranteed.



User-friendliness

Easy installation and interchangeability.



Quick maintenance

and reduced downtimes.

The best choice for material handling applications!

The new **Movex® 553 FlexTop** modular belt with self-locking spheres is specifically designed for high-precision material handling, suitable for several applications like logistic centers, packaging stations (food and beverage) and corrugated industries, easily to be integrated into existing systems.

The 360° movement possibility makes the belt suitable for diverting, rotating, accumulating and accelerating applications and minimize required maintenance and downtimes.

The small pitch between the spheres (diameter 12,7 mm and pitch 25,4 mm) allows every type of product transfer and is ideal for small and light packages, unlike traditional roller conveyors.

The complete closed sliding belt surface is the perfect solution to carry carton boxes, crates, cans and bottles shrink-wrap packaging and any kind of polybag with Top-Accuracy package control.





Description and Features



High strength

Perfect product control

Self cleaning

Great versatility

Long durability

Reduced downtimes

Application areas

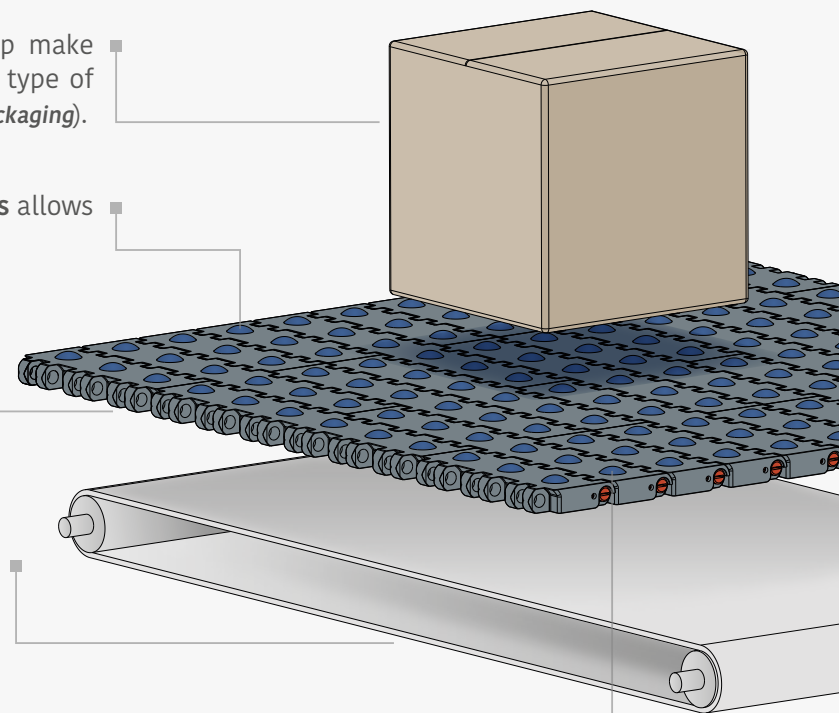
AUTOMATIC STORAGE SYSTEM • Distribution system • Sorting • Lane divider
PRODUCT POSITIONING • Labelling • Printing • Reading Barcodes
PRODUCT ORIENTATION • Casing machines • Palletizers
REJECT STATION • Inspection equipment • Measuring devices

Design and features of 553 FlexTop make it ideal for the transport of several type of products (e.g. polybags, shrink-wrap packaging).

The small pitch between the **spheres** allows for a great product-control.

A complete closed sliding surface, in combination with self-locking spheres, makes the **belt** design flexible and robust.

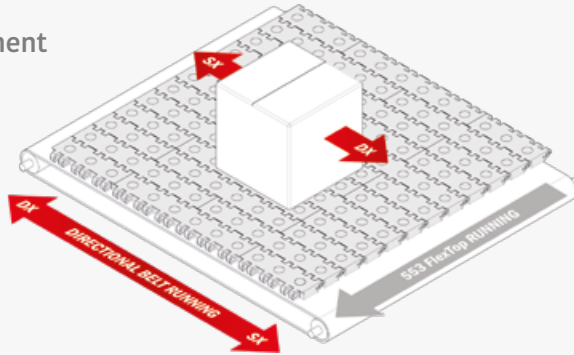
The **directional belt** underneath the Flextop belt controls the direction and the speed of the spheres, making this belt 100% versatile.





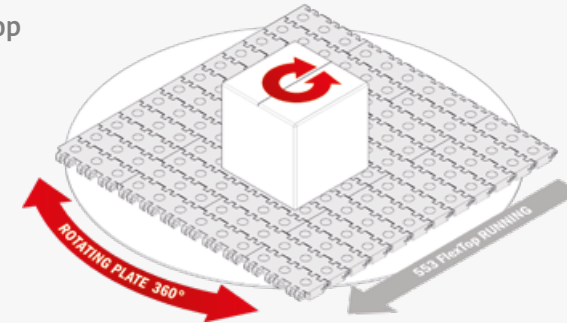
Product capabilities

DIVERTING Side movement



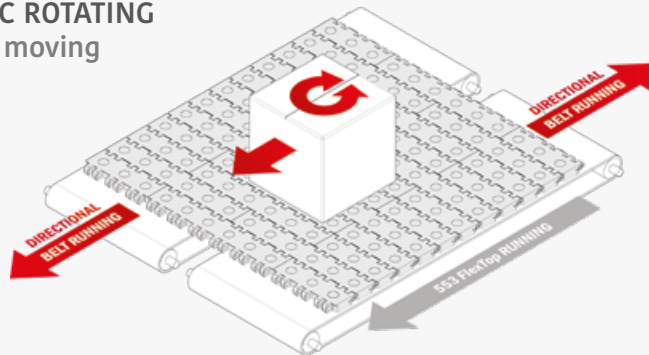
By using a directional belt underneath the Flextop belt, running square to the travel direction, the product can be transferred left and right.

ROTATING Product stop



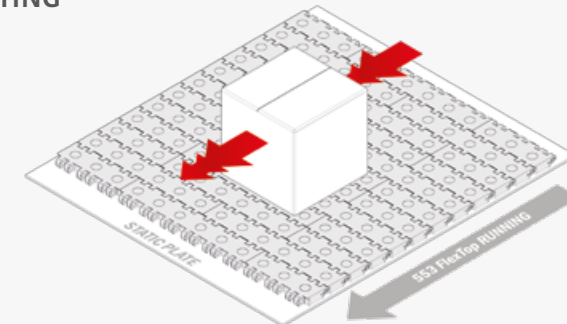
By using a rotating plate underneath the Flextop belt, sphere can rotate by 360°. This option can be used with product stopped or running on the belt, to easily positioning the product.

DINAMIC ROTATING Product moving



By using two auxiliary belts underneath the Flextop belt, running at opposite direction, the product will start rotating. With this option the Flextop belt can keep running.

ACCELERATING

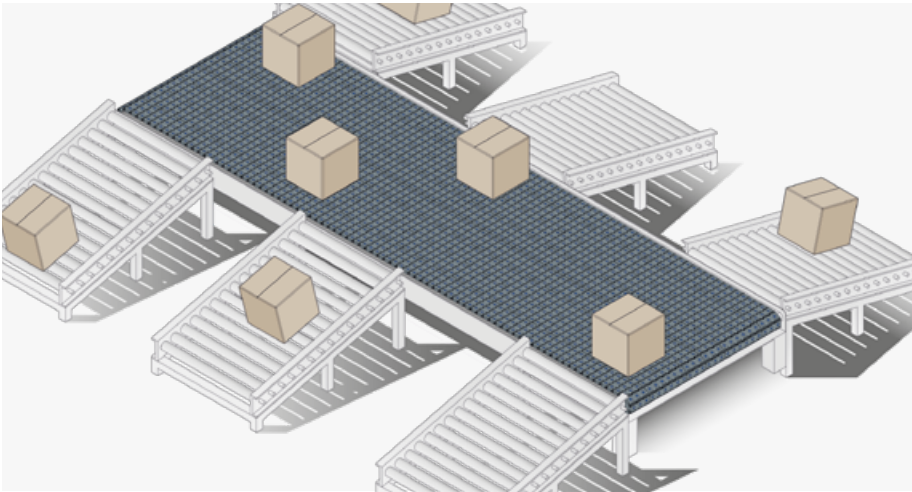


By using a static plate underneath the Flextop belt, spheres will start rotating independently, so the speed of the product will result double than the speed of the belt itself.

ACCUMULATING

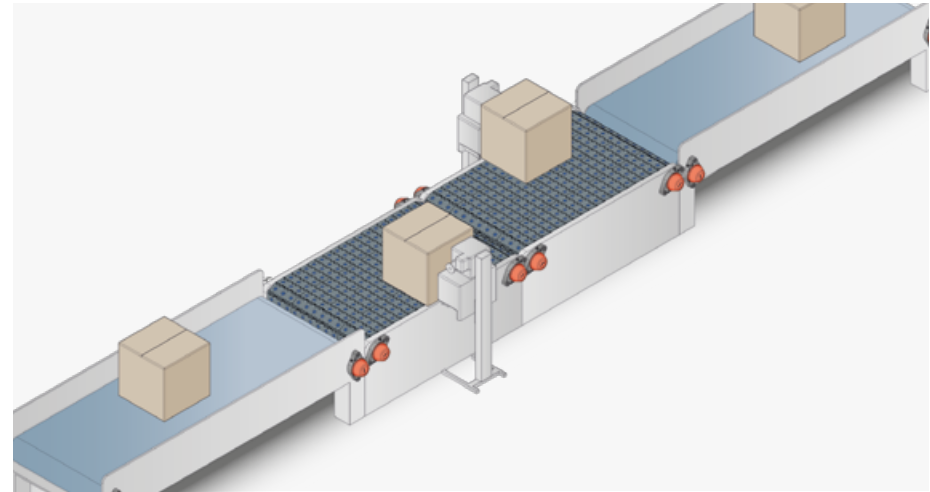
By leaving the spheres free to move, the Flextop belt is ideal for accumulation systems, reducing the friction of the product and the energy consumption of the line. This system can be easily integrated with any of the above combination.

Application example



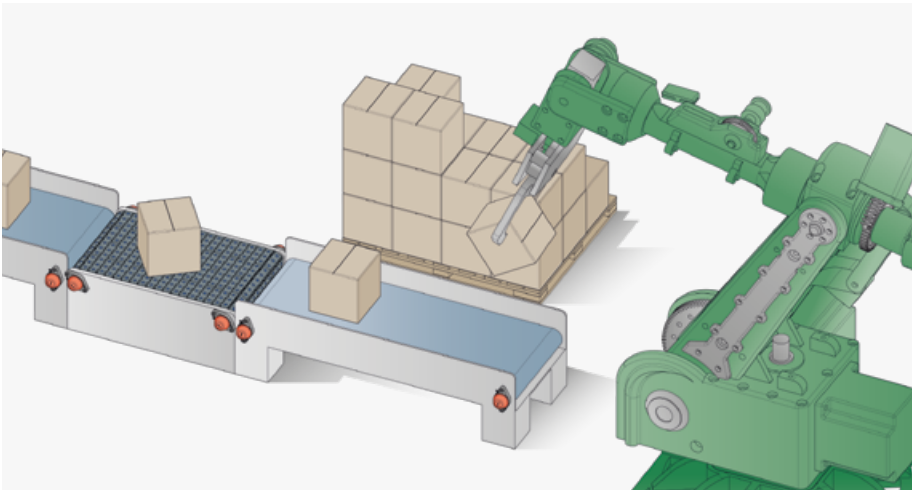
AUTOMATIC STORAGE SYSTEM

- Distribution system
- Sorting
- Lane divider



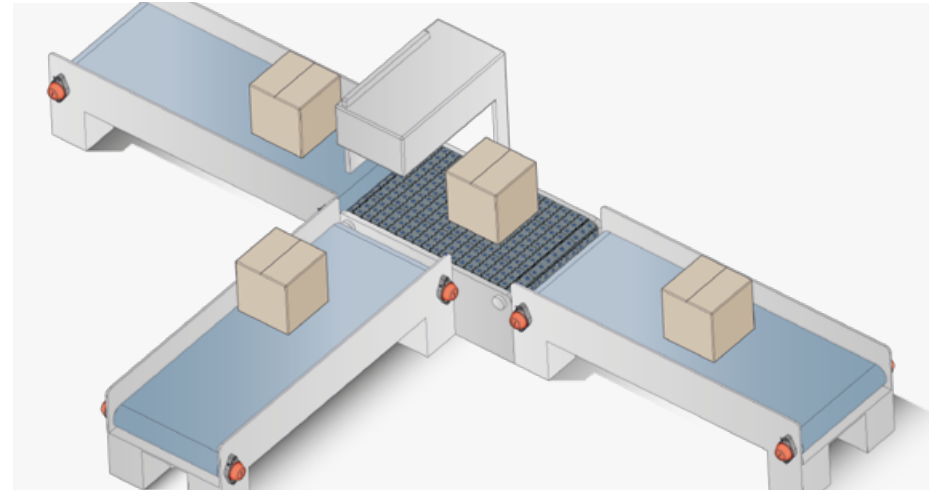
PRODUCT POSITIONING

- Labelling
- Printing
- Reading Barcodes



PRODUCT ORIENTATION

- Casing machines
- Palletizers

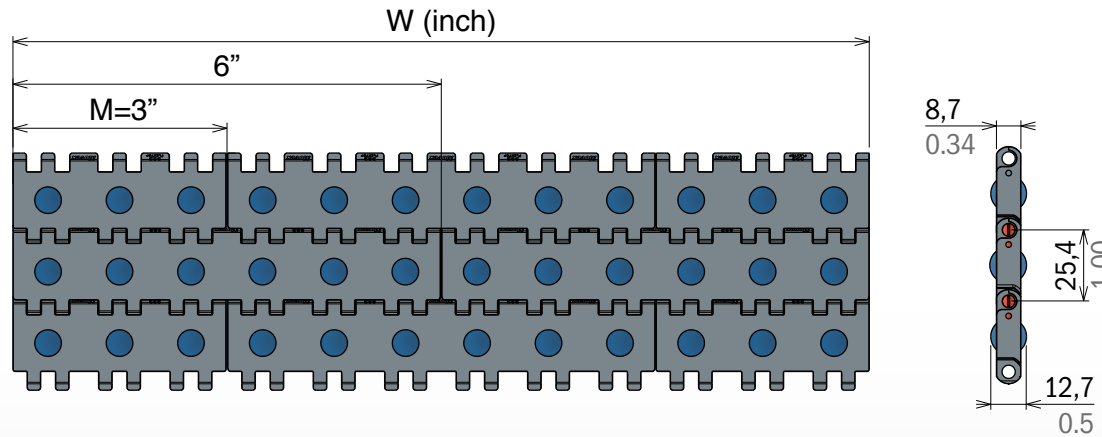


REJECT STATION

- Inspection equipment
- Measuring devices



Product order code



Belt pitch: 25,4 mm (1.00")
Thickness: 8,7 mm (0.34")
Increments: 76,2 mm (3.00")
Back flex radius: 25 mm (0.98")

Belt material: Low friction Acetal (Grey)
Sphere material: High-tech Polyamide (Blue)
Pin material: PBT (White)

Supplied coil length: Width ≤ 30" : 1.524 m (60 pitches) - Width > 30" : 1.016 m (40 pitches) | On request wider belts are available with 3" increments.

Version A - Standard

Series	Material	Width	Version	Series	Material	Width	Version	Series	Material	Width	Version
5530	27	0003	A	5530	27	0042	A	5530	27	0081	A
5530	27	0006	A	5530	27	0045	A	5530	27	0084	A
5530	27	0009	A	5530	27	0048	A	5530	27	0087	A
5530	27	0012	A	5530	27	0051	A	5530	27	0090	A
5530	27	0015	A	5530	27	0054	A	5530	27	0093	A
5530	27	0018	A	5530	27	0057	A	5530	27	0096	A
5530	27	0021	A	5530	27	0060	A	5530	27	0099	A
5530	27	0024	A	5530	27	0063	A	5530	27	0102	A
5530	27	0027	A	5530	27	0066	A	5530	27	0105	A
5530	27	0030	A	5530	27	0069	A	5530	27	0108	A
5530	27	0033	A	5530	27	0072	A	5530	27	0111	A
5530	27	0036	A	5530	27	0075	A	5530	27	0114	A
5530	27	0039	A	5530	27	0078	A	5530	27	0117	A

Continue >>

Continue >>

Material

LFG - Code 27 Low friction Acetal

Max working load: 27500 N/m (1850 lbs/ft)
Weight: 10 Kg/m² (2.04 lbs/ft²)
Temp. range dry: -40÷80 °C (-40÷176°F)
Temp. range wet: -0÷65 °C (+32÷149°F)
Pin material: PBT white

Belt available also in RAL 5005 (Blue)

Sphere material

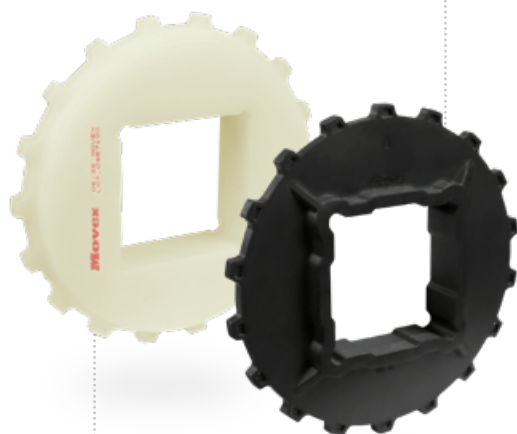
High-tech Polyamide

Max working load: 15 N (3.37" lbs)
Sphere Diameter: 12,7 mm (0.50")

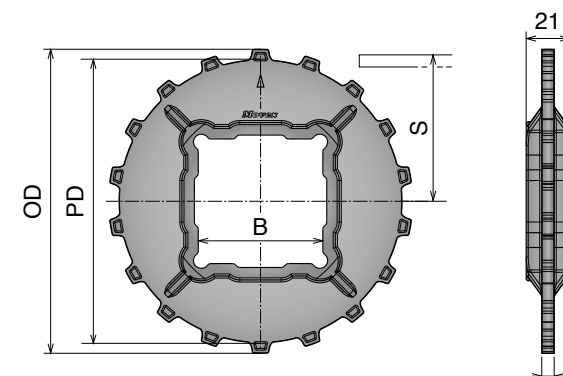
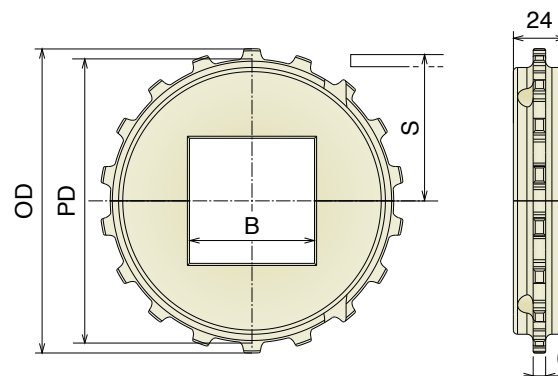
Sprockets available



- Easy clean and installation
- Heavy duty design



- Optimized hygienic
- Quick replacement



Art-Nr.	Z-	Bore (mm-in)	PD (mm-in)	OD (mm-in)	S (mm-in)
166108	12	40x40 1.57x1.57	98,1 3.86	97,6 3.84	44,5 1.75
166208	15	40x40 1.57x1.57	122,2 4.81	121,9 4.80	56,5 2.22
166210		60x60 2.36x2.36			
166308	18	40x40 1.57x1.57	146,3 5.76	146,0 5.75	68,5 2.70
166310		60x60 2.36x2.36			
166311		65x65 2.56x2.56			

Material: Polyamide
Screws: Stainless steel Nuts: Zinc plated steel

Art-Nr.	Z-	Bore (mm-in)	PD (mm-in)	OD (mm-in)	S (mm-in)
166511	18	40x40 1.57x1.57	146,3 5.76	146,0 5.75	68,5 2.70
166510	18	60x60 2.36x2.36			

Material: Reinforced polyamide

553 FLEXTOP

Drive split sprockets
Machined and molded



Movex around the world

Movex GmbH

P +49-6204-9375-0

Movex Brasil Ltda

P +55-15-3141-2550

Movex France

P +39-335-8085980

Movex AG India

P +91-120-4159660-62

Movex Russia

P +7 (495) 925-88-56

Movex UK Ltd.

P +44-77-20678442

Movex Nederland

P +31-630-994850

Movex USA Inc.

P +1-919-274-5477

Movex SA de CV

P +52-1-331845818

Movex Ukraine

P +380-667507756

Movex S.p.A.

Headquarter

Viale Industria, 22 - 24060
Castelli Calepio (BG) Italy

Logistics center

Via Repubblica, 25 - 24060
Castelli Calepio (BG) Italy

