

# Product Range

Electromobility Solutions



MOBILITY & WIND  
INDUSTRIES



## IDENTIFICATION

### PROFILES

- 6347-E45
- 25435-Y4457
- 457457-F9
- 6244-A79
- 1287-D8797
- 363657-C3975

- SETTINGS
- HISTORY
- LOG
- DOCUMENTS

NEW SETTINGS





# Electromobility Solutions



## Electric powertrains

- 600F Series
- 600WOC Series
- EL Series
- 600WE Series
- 600D Series

## Drum drives

- 500 Series

## Electric drives for mini-excavators

- 700TE Series
- 700CE Series

## Wheel & travel drives

- 600W Series
- 700CE Series

## Electric powertrain and drive solutions

A major force for over 40 years, Bonfiglioli conceives, designs and produces custom powertrain and drive for a wide range of electric applications. Wherever a custom solution is required, manufacturers can benefit from Bonfiglioli's technical expertise. Our teams work closely with powertrain designers and component suppliers to develop innovative and efficient tailored-made solutions.

Current emission regulations applied to the automotive industry have been extended to warehouse and material handling vehicles, the concepts and technologies involved are likely to be scaled up to heavy duty applications over the medium term. In fact, heavy duty vehicle manufacturers are eagerly seeking improvements in efficiency and are looking for solutions that can increase productivity and reduce the total cost of ownership for the end-user.

Bonfiglioli is the right partner to support you in developing and designing electric powertrain and drive solutions thanks to years of experience in powertrain design for light and medium duty vehicles.

Bonfiglioli also provides solutions for:



DISCRETE MANUFACTURING & PROCESS INDUSTRIES



MECHATRONIC & MOTION SYSTEMS



MOBILE



WIND

[www.bonfiglioli.com](http://www.bonfiglioli.com)



## More than 40 years of experience in electromobility solutions



Clementino  
founded  
"Costruzioni  
Meccaniche  
Bonfiglioli"

**1956**



First electric  
transmission for  
class III material  
handling

**1976**



First electric  
planetary  
transmission for  
class II material  
handling

**1992**



First electric  
transmission for  
class I forklift

**2007**

**1975**

Bonfiglioli  
Trasmital, now  
one of the most  
respected and  
well-known



**1981**

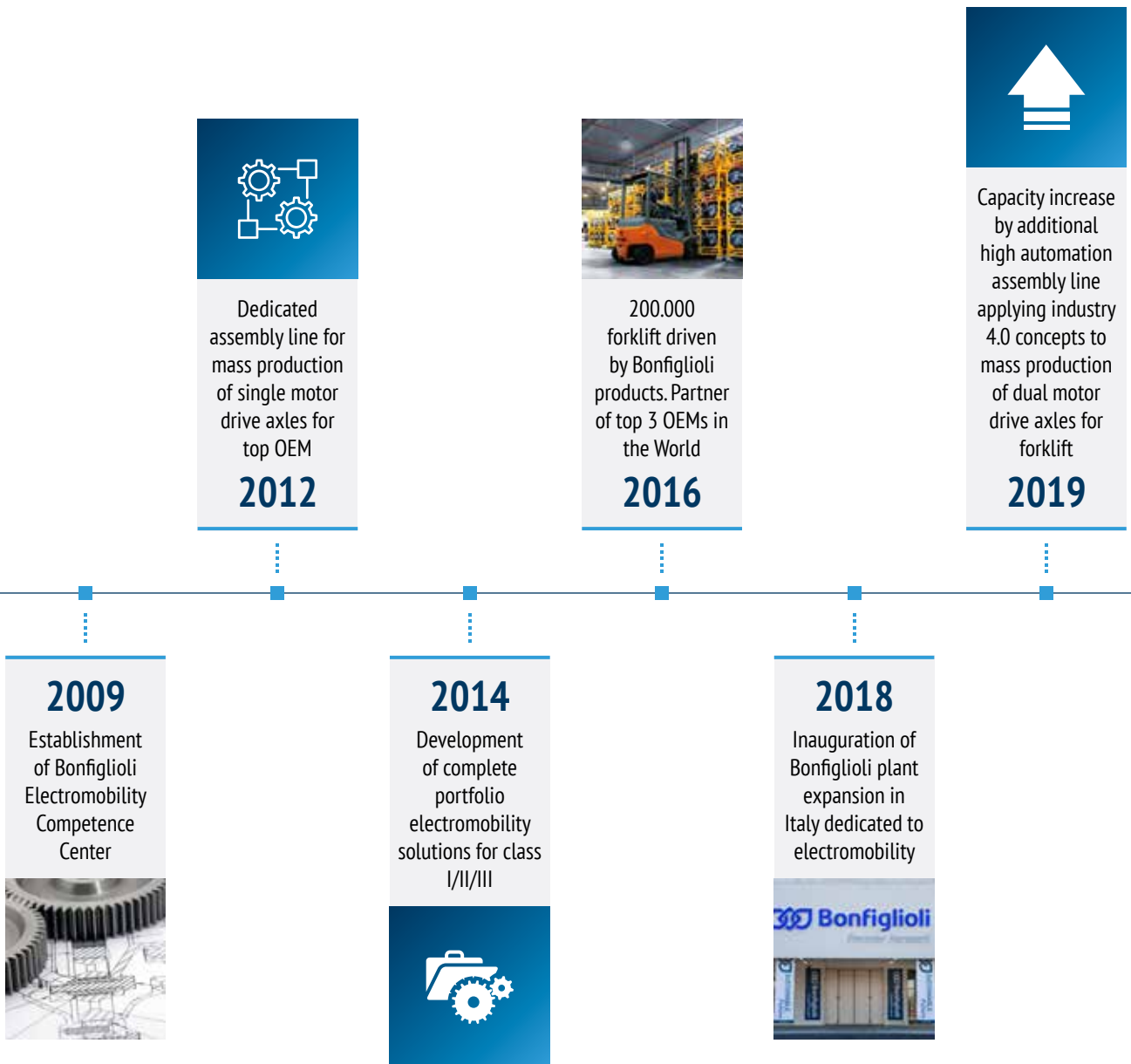
First hydrostatic  
planetary  
transmission for  
class IV material  
handling



**2004**

Development of  
forklift hydraulic  
steering system





# Electric powertrains for material handling vehicles



## 600F Series

Bonfiglioli supplies high-efficiency, low-noise planetary axles and drives with integrated high performance electric motors and low maintenance braking systems for Class 1 material handling vehicles. Typical applications include 3- and 4-wheel counterbalance lift trucks and ground support equipment. Bonfiglioli electric powertrains are fully tested in the factory and guarantee reduced energy consumption. This, in turn, means longer battery operating times, extended service intervals and lower cost of ownership.



CB TRUCKS



MATERIAL  
HANDLING  
VEHICLES



TOW  
TRACTORS

### Gear ratios

- 26 ... 42

### Input speed

- up to 8,000 rpm  
(Depending on ratio and size)

### Main options

- Mechanical disengagement for towing, with no need to remove the wheel and without oil drop
- Wet disc or electric service and parking brakes

### Key features

- Dual stage gearbox
- Optimized gear design for maximum efficiency and minimum noise
- Service brake
- Parking brake
- Integrated, customized mast support
- Integrated AC traction motor protection rating up to IP54
- Integrated, high accuracy, silicon-based KTY temperature sensor
- Integrated, high resolution hall effect speed sensor

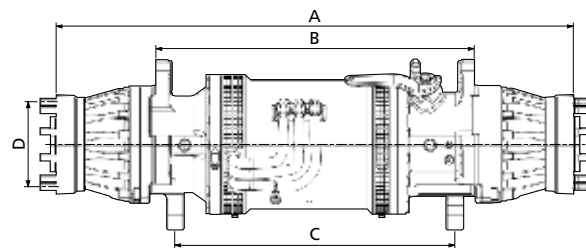
### Torque (Nm)



### Lift capacity (kg)

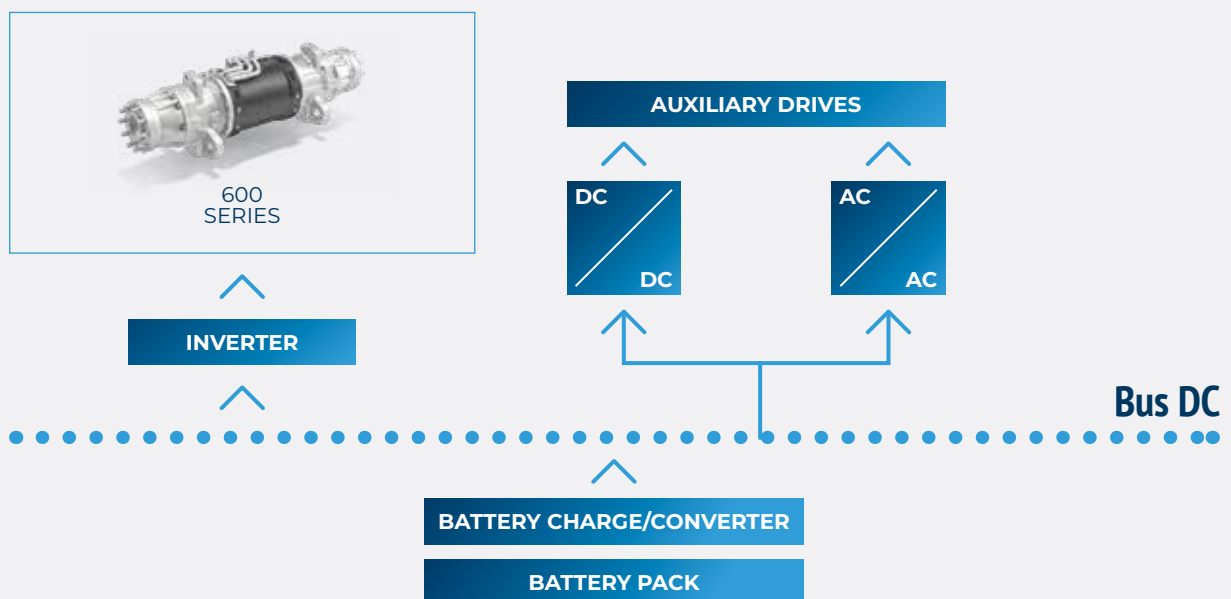


Type	Max input speed	Rated motor power	Typical wheel size
	min <sup>-1</sup>	kW, S2-60'	inches
601 F	8,000	2x4.5	18
602 F	5,500	18	23
603 F	4,500	26	28
605 F	4,500	2x14	35
610 F	4,500	2x30	45



Type	A	B	C	D
	Flange to flange	Frame mounting	Mast mounting	Wheel stud PCD
601 F	1,015	610	630	120
602 F	1,090	640	600	170
603 F	1,150	670	620	225
605 F	1,600	880	-	275
610 F	1,900	1,700	-	410

### Functional Diagram



# Idle steering systems for material handling vehicles



## 600WOC Series

600WOC units are typically applied in the rear section of 3- and 4-wheel counterbalanced forklifts. They can be axles or steering units for twin wheels. Depending on the steering unit model, anti-vibration parts can be included, and they serve as support for fixing brackets. The steering mechanism guarantees a high steering angle to minimize the vehicle's steering radius and allow the truck to move easily in narrow aisles. Depending on the customers' needs, it is possible to customize the unit's main dimensions and other characteristics, such as adding a potentiometer to read the steering angle.



CB TRUCKS



MATERIAL  
HANDLING  
VEHICLES

## Key features

- Hydraulic steering
- Electric steering for 601W0
- Optimized design for steering angle

## Main options

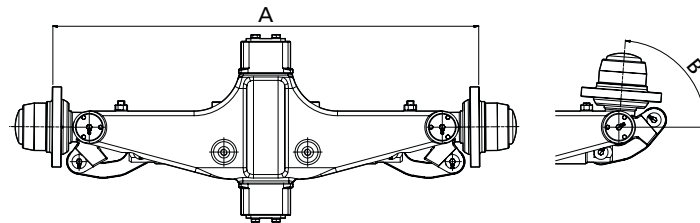
- Anti-vibration parts
- Potentiometer for steering angle
- Electric steering 601W0 available with inverter

## Lift capacity (kg)

601WOC	2,000
602WOC	3,000
603WOC	3,500

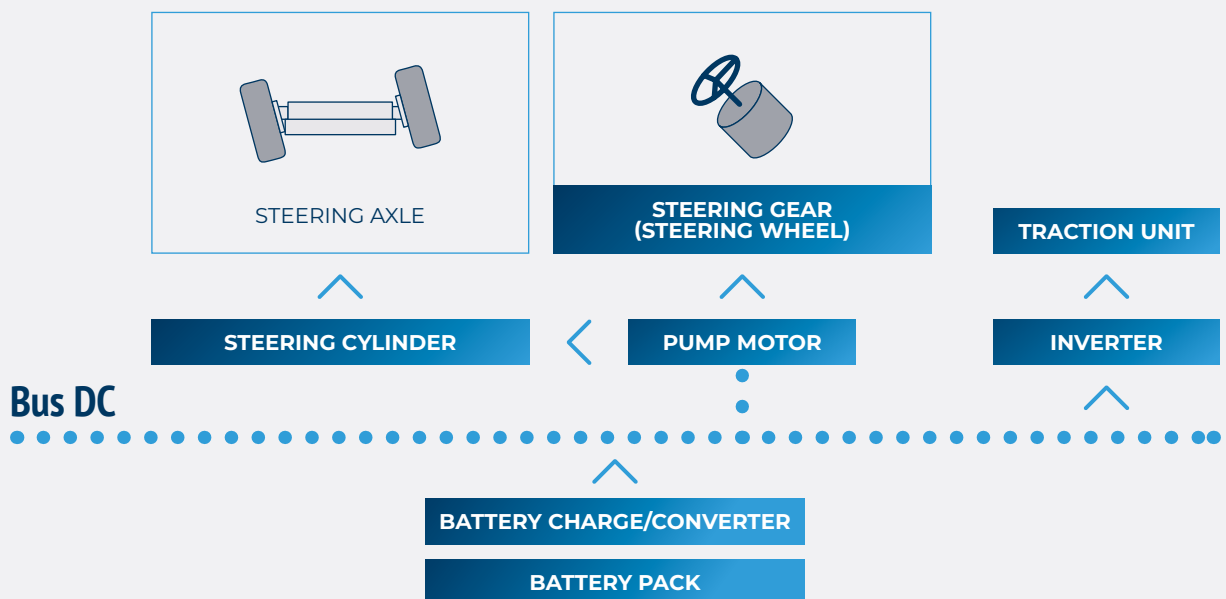


Type	Number of wheels
601WOC	3
602WOC	4
603WOC	4



Type	A	B
	Flange distance [mm]	Max steering angle [deg]
601WOC	215	360
602WOC	830	95
603WOC	930	85

### Functional Diagram



# Electric powertrains for warehouse vehicles



## EL Series

Bonfiglioli EL powertrains are a perfect match for the most demanding warehousing applications (Class 2 and Class 3). Warehousing trucks require high maneuverability in tight spaces, provided by drives like the EL series drives, with the smallest operating radius in vertical arrangements.



MATERIAL  
HANDLING  
VEHICLES



REACH  
TRUCKS



TOW  
TRACTORS

### Gear ratios

- 13 ... 32

### Power range

- 2 ... 7 kW

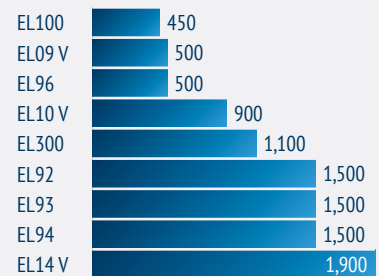
### Main options

- Cold environment versions
- Integrated tiller or castor wheel supports

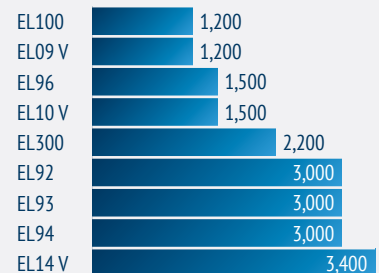
### Key features

- Two-stage helical & bevel gearboxes
- Manual steer and power steer versions
- Optimized gear design for efficiency and noise
- Integrated low-voltage electric motor
- Integrated parking brake
- Complete system with tyres

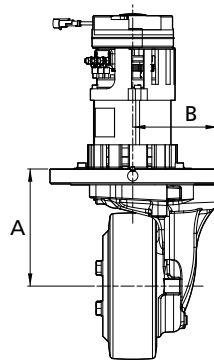
### Torque (Nm)



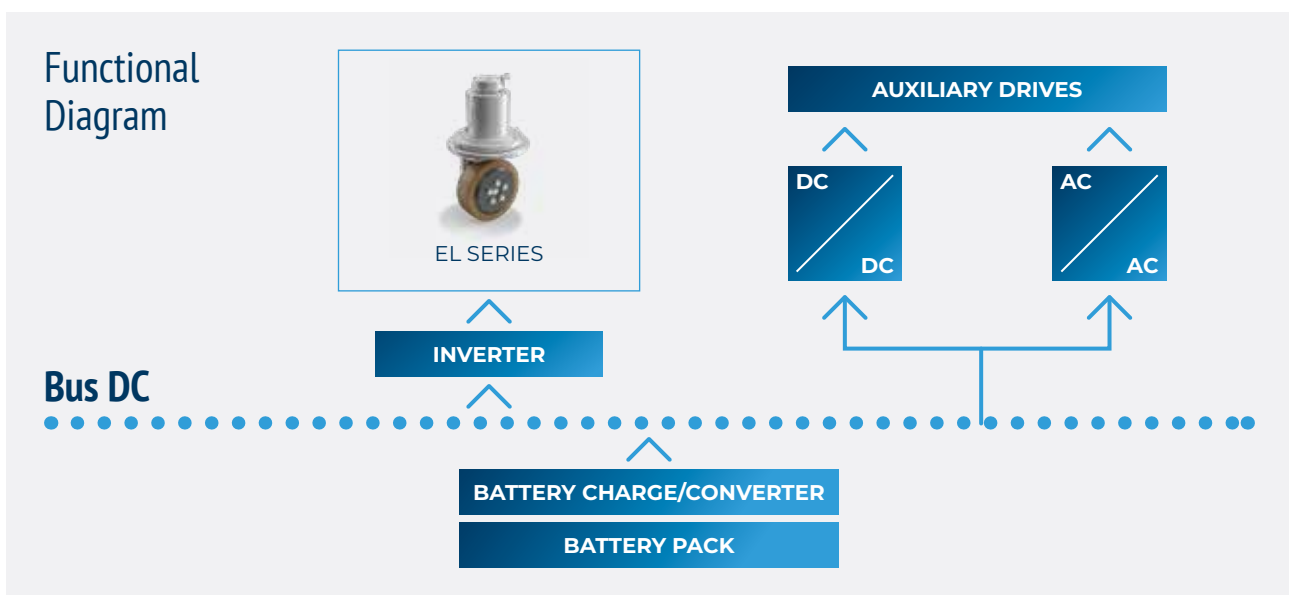
### Max wheel load (kg)



Type	Max wheel diameter	Max ratio	Max power
	mm	i	kW
EL100	230	32	2
EL09 V	230	32	2
EL96	260	24	3
EL10 V	260	24	3
EL300	305	24	4.5
EL92	356	24	7
EL93	406	25	7
EL94	457	25	7
EL14 V	360	24	7



Type	A	B
	mm	mm
EL100	184	134.5
EL09 V	190	125
EL96	215	147
EL10 V	207	125
EL300	249	175
EL92	277	187
EL93	304	187
EL94	325	187
EL14 V	277	187



# Electric powertrains for lightweight industrial machinery



## 600WE Series

Bonfiglioli 600WE planetary drives incorporate an integrated, maintenance-free electric motor and offer significant benefits, including compact dimensions, low noise and high efficiency. This advanced powertrain solution uses a two- or three-stage gearbox offering reduction ratios of up to 1:145 to satisfy the widest possible range of needs. The gearbox is coupled with a low-voltage induction motor (BT Series), specially developed for traction power and control applications.



ACCESS  
PLATFORMS



SCISSOR  
PLATFORMS



TELESCOPIC  
PLATFORMS

### Input speed

- up to 6,000 rpm

### Main options

- Speed sensor bearing
- Other types of temperature sensors
- Mechanical disengagement for towing, with no need to remove the wheel and without oil drop
- Parking brake (spring applied with hydraulic or electromagnetic release)

### Key features

- Two- or three-stage planetary drive with reduction ratios of up to 1:145
- Optimized gear design for maximum efficiency and minimum noise
- Integrated, low voltage, 3 phase induction motor with inverter
- Integrated, high accuracy, KTY temperature sensor
- High resolution, Hall effect speed sensor

### Torque (Nm)

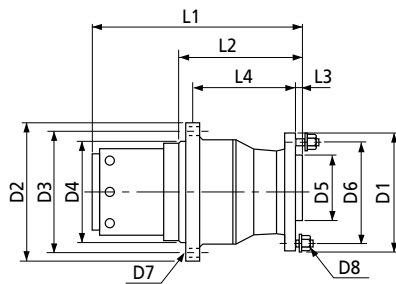


Type	Rated motor data
	kW, S2-60'
600 WE	0.9 ... 3.4
601 RE	2.5 ... 4.3
602 RE	3.4 ... 5.4
602 WE	3.4 ... 5.4
604 WE	4.3 ... 6.2
605 WE	5.4 ... 9.1

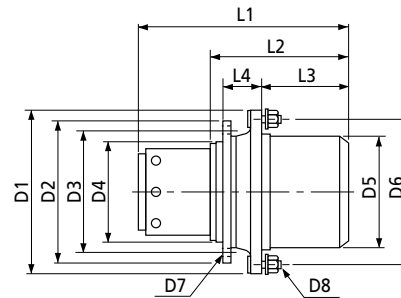


Type	Ratios	Max Input Speed	Weight	Oil Quantity	AC Electric Motor - Size				Parking Brake		Machine Ton Class
					BT135	BT150	BT170	BT200	Electromagnetic	Hydraulic	
	1:	rpm	kg	L							
600 WE	48- 58.7	6,000	35	0.5	•	•			•		2 ÷ 4
601 RE	20.1 - 51.8	4,000	40	0.8		•	•		•	•	4 ÷ 6
602 RE	20.3 - 30.6	6,000	53	0.7		•	•		•	•	6 ÷ 9
602 WE	20 - 145	6,000	45	0.5		•	•		•	•	6 ÷ 9
604 WE	22.2 - 53	5,000	65	1.1			•	•	•	•	9 ÷ 12
605 WE	22.2 - 125	5,000	65	1.1			•	•		•	12 ÷ 18

	BT 135-			BT 150-			BT 170-			BT 200-		
	50	100	150	50	100	150	50	100	150	50	100	150
$P_n$ (S2 60') (kW)	0.9	1.6	2.3	1.5	2.5	3.4	2.4	4.3	5.4	3.1	6.2	9.1
$T_n$ (Nm)	3	5.6	8.5	4.8	9.1	12.5	7.7	14	22	10	20	29.5
$V_{batt}$ (V)	24	24	24	24	24	24	48	48	48	80	80	80
$I_n$ (A)	55	95	128	80	130	175	67	110	143	53	98	137
$n$ (rpm)	2,930	2,927	2,632	2,894	2,617	2,610	2,945	2,952	2,357	2,957	2,963	2,958
$\cos\phi$	0.77	0.8	0.81	0.85	0.86	0.87	0.77	0.83	0.8	0.77	0.8	0.84
$\eta$ (%)	86.9	89.5	90.0	85.5	88.7	89.2	88.3	89.6	91.3	88.8	91.6	92.5



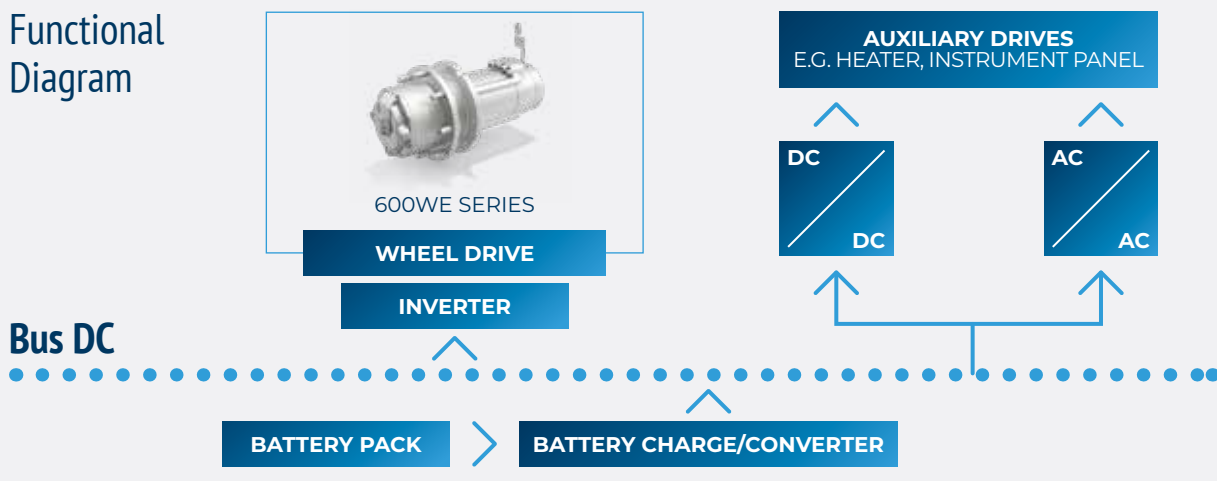
RE version



WE version

Type	L1												L2	L3	L4	D1	D2	D3	D4	D5	D6	D7	D8
	BT 135-			BT 150-			BT 170-			BT 200-													
	50	100	150	50	100	150	50	100	150	50	100	150											
600WE	275	325	375	290	340	390	-	-	-	-	-	-	134	39	89	240	207.5	190.5	171.45	184.15	216	M8 n.6	M12 n.9
601RE	-	-	-	-	453	503	412	462	-	-	-	-	247	12	200	189	265	245	225	110	160	Ø13 n.8	M14x1.5 n.8
602RE	-	-	-	-	-	524	434	484	534	-	-	-	269	15	193	210	295	265	235	130	170	M16 n.8	M18 n.6
602WE	-	-	-	-	-	455	375	425	475	-	-	-	210.5	104.5	88	260	271	248	220	200	230	Ø15 n.12	M14 n.9
604WE	-	-	-	-	-	-	-	464	514	446	496	-	231	110	106	315	300	275	250	220	275	M16x2 n.12	M20x1.5 n.8
605WE	-	-	-	-	-	-	-	-	524	456	506	556	241	154	72	315	300	275	250	220	275	M16x2 n.12	M20x1.5 n.8

Functional Diagram



# Electric powertrains for lightweight vehicles



## 600D Series

Bonfiglioli supplies versatile low noise drives coupled to electric motors for all-electric, battery powered vehicles like urban passenger cars, commercial vehicles and delivery trucks. This solution ensures more energy-efficient operations and extended autonomy from the battery, thanks to optimised, low backlash helical gears and high speed bearings. Bonfiglioli's 600D Series drives are extremely lightweight, thanks to their cast aluminium casings developed using all of Bonfiglioli's vast process expertise.



COMMERCIAL  
VEHICLES



URBAN  
VEHICLES



BATTERY  
POWERED  
VEHICLES

## Key features

- Multi-stage, parallel shaft gearbox with reduction ratios of up to 1:15
- Optimised gear design for maximum efficiency and minimum noise
- Integrated mechanical differential
- Lightweight cast aluminium housing
- Versatile gearbox installation in the chassis
- Low voltage electric traction motor with inverter control

## Optional features available on request

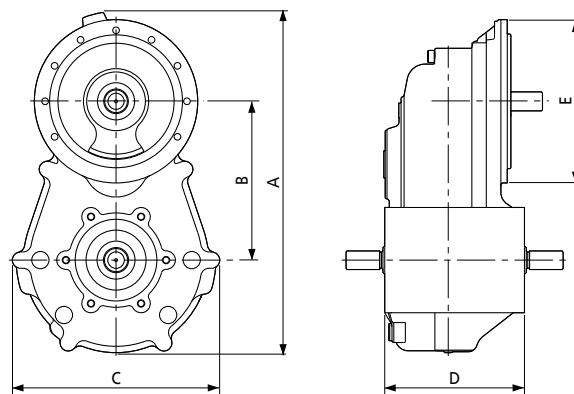
- Input for 2 electric motors
- Integrated mechanical parking lock
- Integrated, high resolution Hall-effect speed sensor
- Matched mechanical joints and shafts
- Matched electric motors and inverters

## Torque (Nm)

600D	1,000
601D	1,500
602D	4,500

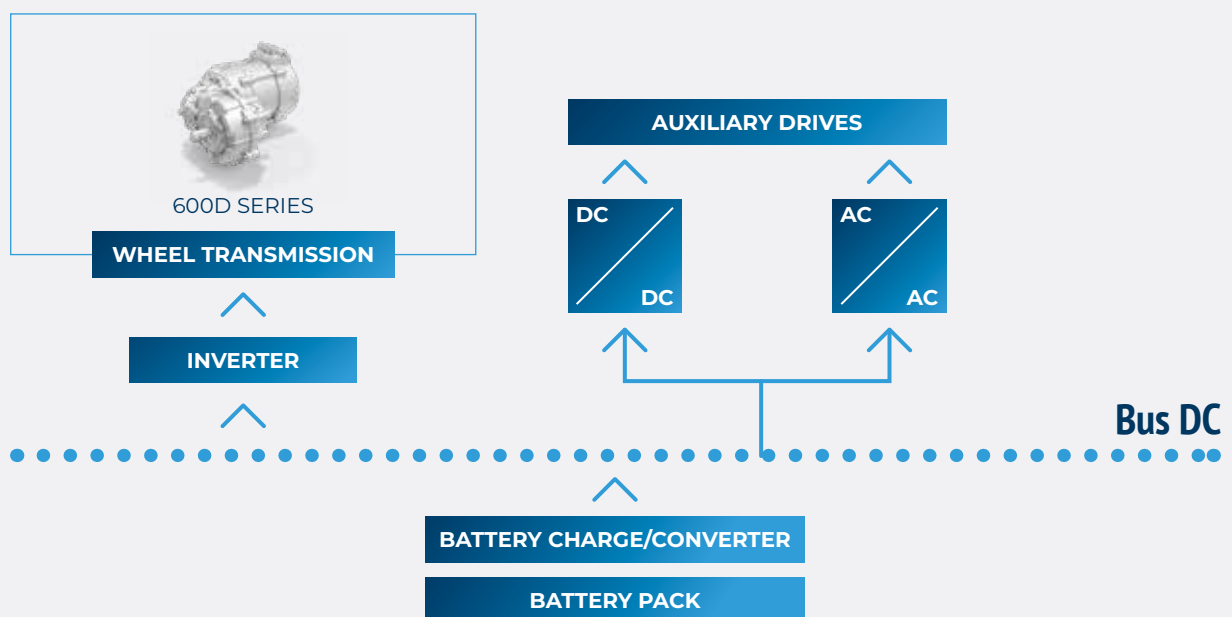


Type	Rated motor power kW, S2-60'	Vehicle weight kg
	5 ... 20	700 ... 1,250
600D	20 ... 30	1500 ... 2500
601D	30 ... 45	1,800 ... 3,500
602D		



Type	A	B	C	D	E
600D	375	175	229	154	180
601D	445	175	235	190	205
602D	530	250	260	235	230

### Functional Diagram



# Wheel drives for hybrid construction & agriculture machinery



## 600W Series

Bonfiglioli's 600W planetary wheel drives can be coupled to a high-power density electric motor, instead of a conventional hydraulic motor. This complete mechatronic solution is designed for a high voltage hybrid powertrain system and was originally conceived for self-propelled crop sprayers.



HYBRID  
SELF-PROPELLED  
SPRAYERS



HYBRID  
AGRICULTURAL  
MACHINERY



HYBRID  
CONSTRUCTION  
MACHINERY



HYBRID ROAD  
MACHINERY

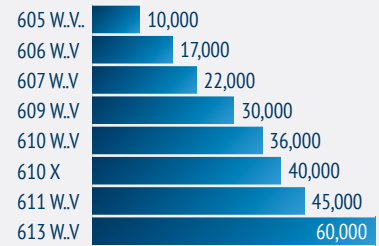
## Advantages for OEM

- Possibility of downsizing and downspeeding combustion engines
- Ease of installation: electric solution dimensions comparable to standard hydrostatics
- Higher system reliability: fewer mechanical parts
- Virtually maintenance-free electric motors
- From wheel bolt to electric wire with only one supplier

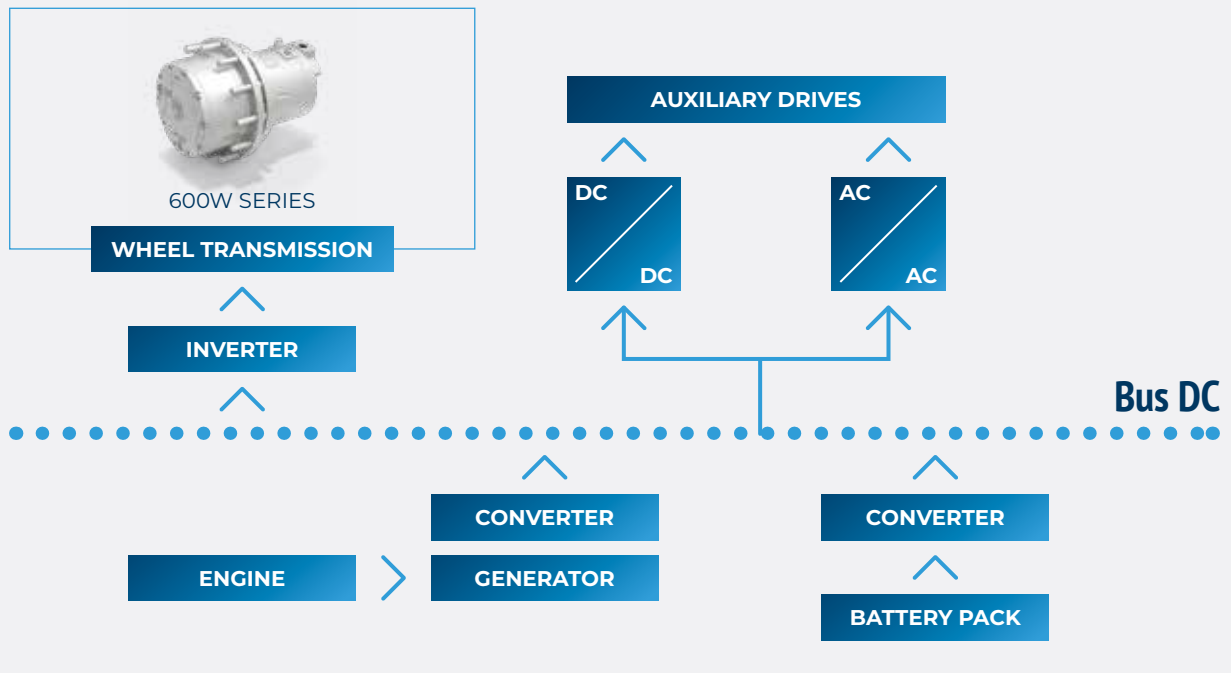
## Advantages for final user

- Reduction of fuel consumption
- Increase of productivity
- Better machine manoeuvrability
- The electric solution is cleaner: lower risk of oil spills

## Torque (Nm)



## Functional Diagram



# Electric travel drives for crushers



## 700CE Series

Bonfiglioli 700CE planetary drives coupled with a high-power density electric motor are specifically designed for high-voltage hybrid powertrain systems.

An integrated, maintenance-free IPM (internal permanent magnet) electric motor is included, giving significant benefits in terms of dimensions and efficiency. For outdoor use on rough soils, the motor protection class is IP67. The overall length in the case of SAHR brake, is particularly limited, close to the size of a hydraulic motor.



### Gear ratios

- Up to 166

### Input speed

- up to 6,000 rpm

### Benefits for the end-user

- Reduced fuel consumption
- Increased productivity
- Better machine maneuverability
- The electric solution is cleaner: lower risk of oil spills

### Benefits for OEMs

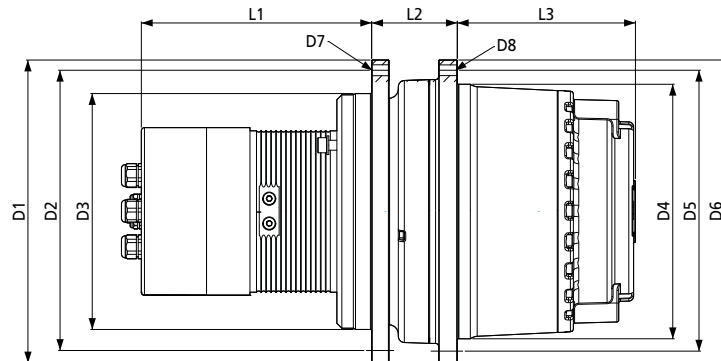
- Ability to downsize and downspeed combustion engines
- Ease of installation: electric solution dimensions comparable to standard hydrostatics
- Higher system reliability: fewer mechanical parts
- Virtually maintenance-free electric motors
- From sprocket to electric wire with only one supplier

### Torque (Nm)



Type	Ratio	Crusher weight
	1:	ton
707 C3 E	109 ÷ 154	28
709 C3 E	93 ÷ 147	36
710 C3 E	93 ÷ 166	45
711 C3 E	94 ÷ 163	50
713 C3 E	93 ÷ 147	60





Type	D1	D2	D3	D4	D5	D6	D7	D8	L1	L2	L3
707 C3 E *	317	285	240	300	340	370	M20x2.5 no.20	M16x2 no.20	371 Air cooling Based on the motor type	82	233
709 C3 E	375	340	300	330	370	400	M20x2.5 no.16	M16x2 no.30		91	243
710 C3 E	375	340	300	350	400	435	M20x2.5 no.16	M20x2.5 no.16		91	243
711 C3 E	425	325	290	410	455	490	M20x2.5 no.24	M20x2.5 no.24		110	265
713 C3 E	425	325	290	410	455	490	M20x2.5 no.24	M20x2.5 no.24		110	280

\* e-motor installation by counter flange.

## Motor data

### Rated voltage DC BUS

- 400 V

### Rated motor power

- 24.4 kW S1

### Maximum motor torque

- 400 Nm [255 A] (up to 1,200 rpm)

### Motor speed

- Up to 6,000 rpm

### Protection class

- IP 67

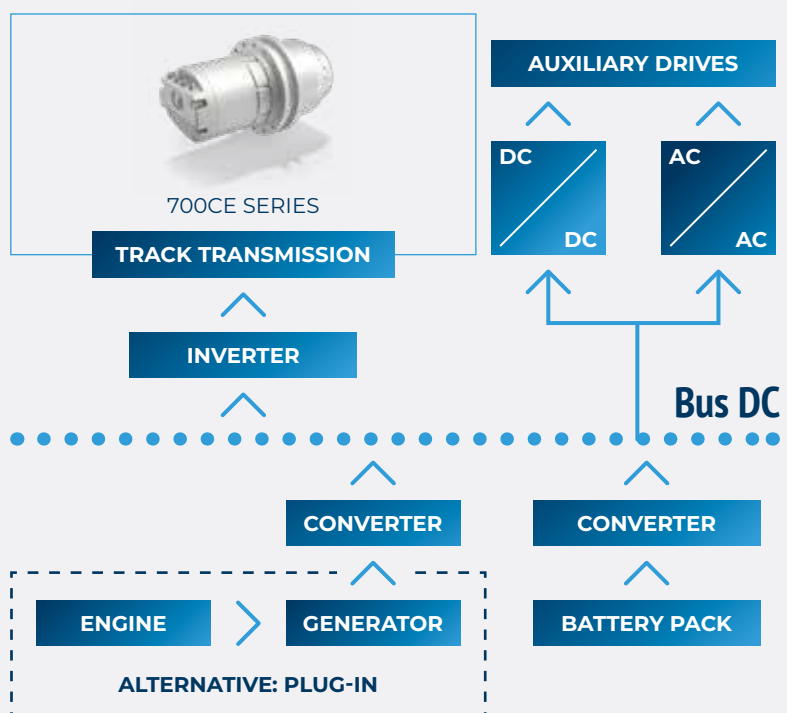
### Ins. Class

- H

### Max. output torque

- Up to 60,000 Nm

## Functional Diagram



# Drum drives for hybrid concrete mixers



## 500 Series

This solution is designed for use with medium/large mixer trucks that have medium/long delivery distances to travel. Bonfiglioli's innovative solution comprises a Bonfiglioli 500 Series gearbox coupled to an AC electric motor, providing normal power, and a DC electric motor for emergency use.



This product not only guarantees greater energy efficiency and reduced fuel consumption, but also helps cut cement mixer truck operating costs. Performance is improved too: rotation speed control is more accurate, operating noise levels are significantly lower. Finally, functionality remains higher in the event of a failure: the presence of a second backup DC motor provides reassuring redundancy and eliminates the risks and potentially hazardous situations caused by failures of the drum emptying system.

### Key benefits

- Increased energy efficiency
- Reduced fuel consumption
- Optimized gear design for maximum efficiency and minimum noise

### Torque (Nm)

577  60,000



## Gearbox data

### Ratio

- Main: 1:220
- Emergency: 1:2,200

### Max output torque

- Main: 60,000 Nm
- Emergency: 10,500 Nm

### Max input speed

- Main: 3,500 rpm
- Emergency: 2,000 rpm

### Oil quantity

- 8 lt

### Dry weight

- 328 kg

## Motor data

### Type

- Main: Induction AC
- Emergency: PM DC motor

### Rated Power

- Main: 40 kW
- Emergency: 2 kW

### Voltage

- Main: 170 VAC
- Emergency: 24 VDC

### Protection degree

- IP66

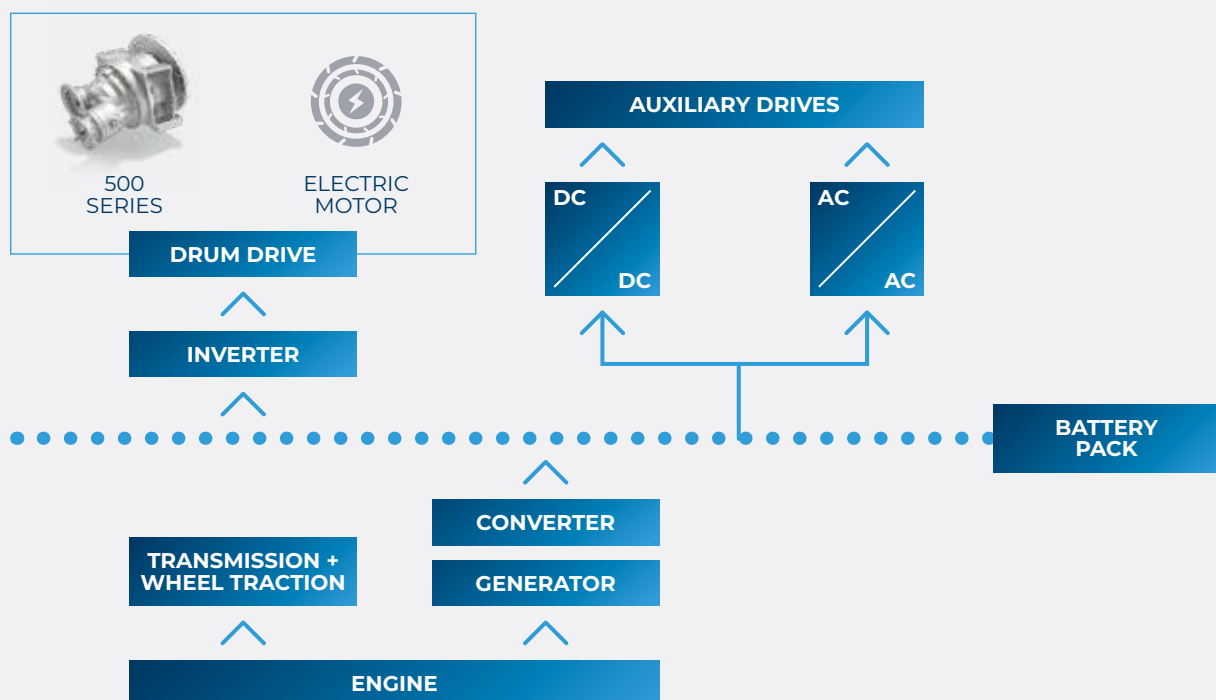
### Cooling

- Main: Liquid
- Emergency: Air forced

## Key features

- Service intervals less frequent and simplified versus the standard hydraulic solution
- Better drum rotation speed control
- The emergency electric DC motor allows higher availability in case of machine failure

## Functional Diagram



## Electric drives for mini-excavators



The compactness of Bonfiglioli slew and track drives for 1 to 6 ton mini-excavators ensure the direct replacement of hydraulic gearmotors. High performance, including high torque in a compact space, is one of our portfolio's key benefits. The use of electric drives grants higher efficiency reducing the TCO and easier maintenance. These solutions allow the machine to be operated inside enclosed environments with lower noise and no polluting emissions compared to traditional mini-excavators.

Current emission regulations applied to the automotive industry are likely to be scaled up to heavy duty applications over the medium term. In fact, heavy duty vehicle manufacturers are eagerly seeking improvements in efficiency and are looking for solutions that can increase productivity and reduce the total cost of ownership for the end-user.

### 700TE Series

Swing drive for electric mini-excavators

#### Key features

- Compact solution thanks to PM e-motor
- Fully integrated design
- Integrated Electromagnetic Brake
- Integrated speed and temperature sensors
- High protection degree

### 700CE Series

Track drive for electric mini-excavators

#### Key features

- Reduced axial length thanks to PM e-motor
- Fully integrated design
- Integrated Parking Electromagnetic Brake
- Integrated speed and temperature sensors
- High protection degree



The system architecture of an electric mini excavator consists of a battery pack which is the power source of the machine, so called DC bus. From the latter, both gearmotors dedicated to the translation and to the cabin slewing are powered by inverters. The system is managed by a vehicle control unit (VCU) that gathers the inputs from the human operator and drives the electric gearmotors through a CAN fieldbus.



MEET OUR CUSTOMERS' NEEDS



CO-ENGINEERING DEVELOPMENT



PROJECT COMMISSIONING



LOCALIZED PRODUCTION

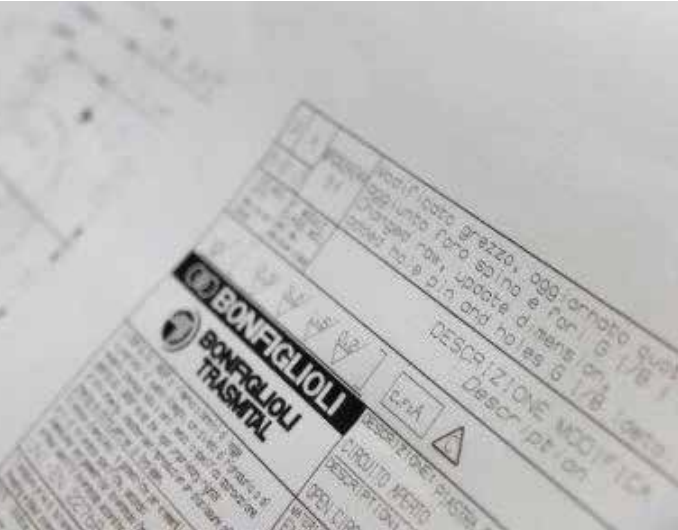


GLOBAL NETWORK



OVER 40 YEARS OF EXPERIENCE

# Research & Development



Bonfiglioli's global research and development create breakthrough solutions that integrate the most advanced mechanical, electrical and hydraulic technologies. They meet the most demanding application requirements and support our customers' growth.

More than 200 employees around the world are involved in the group's research and development.



DESIGN YOUR  
SOLUTIONS



CO-  
ENGINEERING

## We support our customers' projects from beginning to end.

At Bonfiglioli, we believe that product development relies on passion, efficient processes, and the ability to understand our customers' needs accurately.

First, our team identify the customer's needs after in-depth analysis drawn from our specific application expertise.

Through dedicated calculation tools, we can simulate the transmission's capabilities and performance allowing reducing development time.

The alignment phase allows us then to adapt our proposal according to key factors of performance, installation and maintenance.



### The test centers at Bonfiglioli

Bonfiglioli's test laboratories support the various phases of the product life cycle, including development, certification and the production of solutions developed and manufactured in our plants around the world.

Our specialists are true partners to the R&D, technical and quality departments. They help validate each Bonfiglioli product from the smallest critical component to the overall solution.

The test centers regularly conduct additional tests to ensure the product durability and confirm the specifications declared during the official approval stage.



# Quality, Health & Safety



Our team is wholly dedicated to continuous improvement in the quality, safety and environmental sphere, throughout the entire value chain, from the smallest supplier to the end client.

Bonfiglioli management systems are certified ISO 9001: 2015, ISO 14001: 2015 and OHSAS 18001: 2007, while our products are covered by international certifications. Responsibility, excellence and continuous improvement are the basic elements that make us the favored partner of our clients and suppliers.



SYSTEM  
CERTIFICATION



PRODUCTS  
CERTIFICATION

## Quality

Bonfiglioli is committed to achieving the highest ethical and quality standards. These standards are documented in the Bonfiglioli Quality Management System.

Our products are intended to generate value for our customers. We are committed to designing, manufacturing and supplying effective products and services that set a benchmark for quality in the industry.

Based on defined procedures and instructions, the Bonfiglioli Quality Management System has been established not only to ensure the ongoing quality of our products and processes, but also to guarantee continuous improvement.

Bonfiglioli has also implemented a Quality Policy which sets customer focus as a primary goal. The Quality Policy is used to set and deploy goals and objectives at every level of the organization. The fulfilment of these objectives is measured on a regular basis with appropriate performance indicators.



## Health & Safety: Sustainability starts with safety

Prevention of accidents and incidents is a key element of our company's sustainable strategy and an integral part of each one of our business processes. The successful management of risks is essential for protecting our employees and assets and thereby contribute therefore strengthening.



## Global Presence



Bonfiglioli is a market force with a presence spanning 22 countries on 5 continents. Our organization makes the most of geographic proximity to offer complete solutions combining efficiency and competence.



3700  
EMPLOYEES



20  
BRANCHES



14  
PLANTS



550  
DISTRIBUTORS



80  
COUNTRIES

## We Are a Global Company

Thanks to an international network of sales branches and closely interconnecting production plants, we can guarantee the same high standards of Bonfiglioli quality anywhere at any given time. Aware that our direct presence in local markets is the key to long-lasting success, our family includes 20 sales branches, 14 production plants and more than 500 distributors around the world.

**Our organization is always close by, offering complete and efficient solutions and supporting our customers with dedicated services, such as co-engineering or after-sales assistance.**



# Bonfiglioli Worldwide Locations

## Australia

### **Bonfiglioli Transmission (Aust.) Pty Ltd.**

2, Cox Place Glendenning NSW 2761  
Locked Bag 1000 Plumpton NSW 2761  
Tel. +61 2 8811 8000

## Brazil

### **Bonfiglioli Redutores do Brasil Ltda.**

Travessa Cláudio Armando 171 - Bloco 3 - CEP 09861-730  
Bairro Assunção - São Bernardo do Campo - São Paulo  
Tel. +55 11 4344 2322

## China

### **Bonfiglioli Drives (Shanghai) Co. Ltd.**

#68, Hui-Lian Road, QingPu District,  
201707 Shanghai  
Tel. +86 21 6700 2000

## France

### **Bonfiglioli Transmission s.a.**

14 Rue Eugène Pottier  
Zone Industrielle de Moimont II - 95670 Marly la Ville  
Tel. +33 1 34474510

## Germany

### **Bonfiglioli Deutschland GmbH**

Sperberweg 12 - 41468 Neuss  
Tel. +49 0 2131 2988 0

### **Bonfiglioli Vectron GmbH**

Europark Fichtenhain B6 - 47807 Krefeld  
Tel. +49 0 2151 8396 0

### **O&K Antriebstechnik GmbH**

Ruhrallee 8-12 - 45525 Hattingen  
Tel. +49 0 2324 2050 1

## India

### **Bonfiglioli Transmission Pvt Ltd.**

Plot No. AC7-AC11, SIDCO Industrial Estate,  
Thirumudivakkam - 600 044 Chennai  
Tel. +91 44 2478 1035

### **Industrial**

Survey No. 528, Porambakkam High Road,  
Mannur Village, Sriperambudur Taluk - 602 105 Chennai  
Tel. +91 44 6710 3800  
Plot No. A-95, Phase IV, MIDC Chakan, Village Nighoje  
Pune, Maharashtra - 410 501

## Italy

### **Bonfiglioli Riduttori S.p.A.**

#### **Headquarters**

Via Giovanni XXIII, 7/A - 40012 Lippo di Calderara di Reno  
Tel. +39 051 647 3111

#### **EVO - Industrial**

Via Bazzane, 33/A - 40012 Calderara di Reno  
Tel. +39 051 6473111

#### **Mobile, Wind**

Via Enrico Mattei, 12 Z.I. Villa Selva - 47100 Forlì  
Tel. +39 0543 789111

#### **Bonfiglioli Italia S.p.A**

Via Sandro Pertini lotto 7b - 20080 Carpiano  
Tel. +39 02 985081

#### **Bonfiglioli Mechatronic Research S.p.A**

Via Unione 49 - 38068 Rovereto  
Tel. +39 0464 443435/36

## New Zealand

### **Bonfiglioli Transmission (Aust.) Pty Ltd.**

88 Hastie Avenue, Mangere Bridge, 2022 Auckland  
PO Box 11795, Ellerslie  
Tel. +64 09 634 6441

## Singapore

### **Bonfiglioli South East Asia Pte Ltd.**

8 Boon Lay Way, #04-09,  
8@ Tadehub 21, Singapore 609964  
Tel. +65 6268 9869

## Slovakia

### **Bonfiglioli Slovakia s.r.o.**

Robotnícka 2129  
Považská Bystrica, 01701 Slovakia  
Tel. +421 42 430 75 64

## South Africa

### **Bonfiglioli South Africa Pty Ltd.**

55 Galaxy Avenue, Linbro Business Park, Sandton,  
Johannesburg, 2090 South Africa  
Tel. +27 11 608 2030

## Spain

### **Tecnotrans Bonfiglioli, S.A.**

Pol. Ind. Zona Franca, Sector C, Calle F, nº 6  
08040 Barcelona  
Tel. +34 93 447 84 00

## Turkey

### **Bonfiglioli Turkey Jsc**

Atatürk Organize Sanayi Bölgesi, 10007 Sk. No. 30  
Atatürk Organize Sanayi Bölgesi, 35620 Çiğli - Izmir  
Tel. +90 0 232 328 22 77

## United Kingdom

### **Bonfiglioli UK Ltd.**

Unit 1 Calver Quay, Calver Road, Winwick  
Warrington, Cheshire - WA2 8UD  
Tel. +44 1925 852667

## USA

### **Bonfiglioli USA Inc.**

3541 Hargrave Drive  
Hebron, Kentucky 41048  
Tel. +1 859 334 3333

## Vietnam

### **Bonfiglioli Vietnam Ltd.**

Lot C-9D-CN My Phuoc Industrial Park 3  
Ben Cat - Binh Duong Province  
Tel. +84 650 3577411



We have a relentless commitment to excellence, innovation and sustainability. Our team creates, distributes and services world-class power transmission and drive solutions to keep the world in motion.

#### **HEADQUARTERS**

Bonfiglioli Riduttori S.p.A.  
Via Giovanni XXIII, 7/A  
40012 Lippo di Calderara di Reno  
Bologna (Italy)  
[www.bonfiglioli.com](http://www.bonfiglioli.com)

