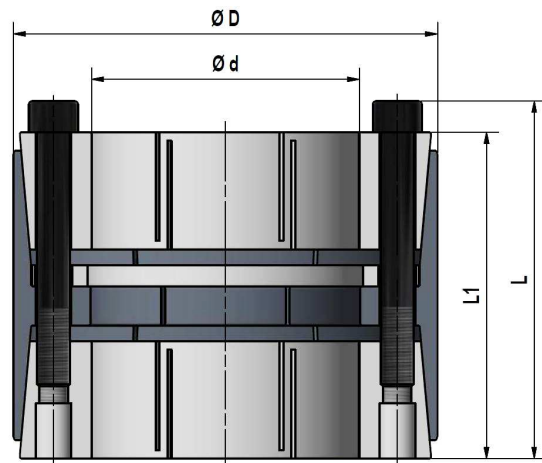
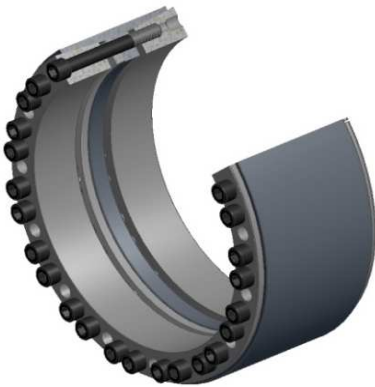


Locking Assembly MAV 6061

rev. 2



Very high torque capacity

Self-locking & self-centering

Axial fixation of hub during tightening: no

Max tolerances: shaft h8; hub bore H8

Shaft / hub bore surface finish: $0.8 \leq Ra \leq 3.2 \mu\text{m}$

Ma: screw tightening torque
 Mt: transmissible torque ($F_{ax}=0$)
 Fax: transmissible axial load ($M_t=0$)
 Ps: shaft pressure
 Ph: hub pressure

Example of order: MAV 6061 - 300 x 425 (d x D)

DIMENSIONS					SCREWS ISO 4762 - 12.9		PERFORMANCES				WEIGHT
d	x	D	L1	L	size	Ma	Mt	Fax	Ps	Ph	
mm		mm	mm	mm		Nm	Nm	kN	MPa	MPa	kg
180	x	285	231	253	M 22	930	226.800	2.520	224	141	60
200	x	305	233	255	M 22	930	288.000	2.880	230	151	65
220	x	325	229	251	M 22	930	316.700	2.880	212	143	70
240	x	355	240	264	M 24	1.200	406.400	3.387	220	149	87
260	x	375	240	264	M 24	1.200	495.300	3.810	229	159	93
280	x	405	238	262	M 24	1.200	592.700	4.234	239	165	108
300	x	425	240	264	M 24	1.200	635.100	4.234	220	155	116
320	x	455	280	307	M 27	1.800	817.800	5.111	215	151	155
340	x	475	285	312	M 27	1.800	965.500	5.679	222	159	164
360	x	495	283	310	M 27	1.800	1.124.000	6.247	230	167	171
380	x	515	280	307	M 27	1.800	1.187.000	6.247	221	163	178
400	x	535	280	307	M 27	1.800	1.249.000	6.247	210	157	186
420	x	555	285	312	M 27	1.800	1.431.000	6.815	215	163	196
440	x	575	285	312	M 27	1.800	1.499.000	6.815	205	157	205
460	x	595	285	312	M 27	1.800	1.567.000	6.815	197	152	213
480	x	615	285	312	M 27	1.800	1.908.000	7.951	223	174	219
500	x	635	280	307	M 27	1.800	1.987.000	7.951	220	173	224
520	x	655	285	312	M 27	1.800	2.067.000	7.951	206	163	236
540	x	675	280	307	M 27	1.800	2.300.000	8.519	212	170	240
560	x	695	280	307	M 27	1.800	2.385.000	8.519	205	165	249
580	x	715	285	312	M 27	1.800	2.470.000	8.519	198	160	258
600	x	735	285	312	M 27	1.800	2.726.000	9.087	204	166	265