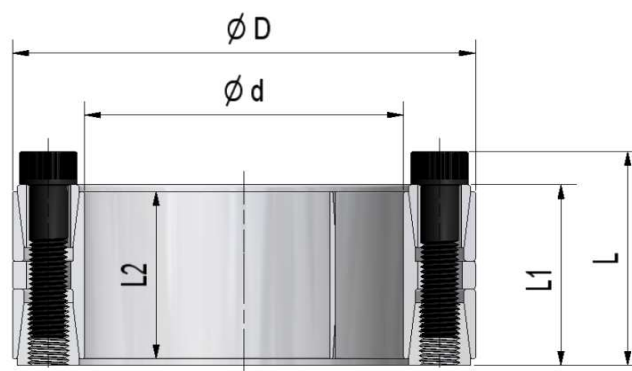
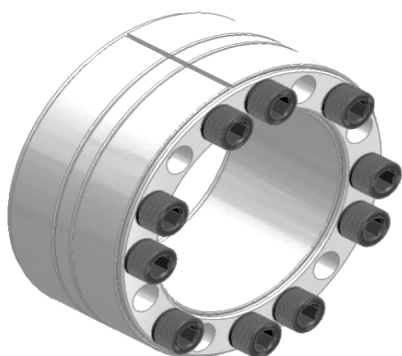


# Locking Assembly MAV 1800

rev. 0



Medium torque capacity

Self-locking & self-centering

Axial fixation of hub during tightening: yes

Max tolerances: shaft h8; hub bore H8

Shaft / hub bore surface finish:  $0.8 \leq Ra \leq 3.2 \mu\text{m}$

Ma: screw tightening torque

Mt: transmissible torque ( $F_{ax}=0$ )

Fax: transmissible axial load ( $M_t=0$ )

Ps: shaft pressure

Example of order: MAV 1800 - 100 x 145 (d x D)

DIMENSIONS						SCREWS ISO 4762 - 12.9		PERFORMANCES				WEIGHT
d	x	D	L2	L1	L	size	Ma	Mt	Fax	Ps	Ph	
mm		mm	mm	mm	mm		Nm	Nm	kN	MPa	MPa	kg
100	x	145	60	65	75	M 10	83	6.700	134	87	60	3,8
110	x	155	60	65	75	M 10	83	8.200	149	88	62	4,1
120	x	165	60	65	75	M 10	83	10.700	179	96	70	4,5
130	x	180	68	74	84	M 10	83	14.500	223	99	72	6,1
140	x	190	68	74	84	M 10	83	15.600	223	92	68	6,6
150	x	200	68	74	84	M 10	83	17.900	238	92	69	7,0
160	x	210	68	74	84	M 10	83	22.000	274	97	74	7,4
170	x	225	75	81	93	M 12	145	27.700	325	101	76	9,4
180	x	235	75	81	93	M 12	145	31.200	347	101	77	10
190	x	250	88	94	106	M 12	145	37.100	390	92	70	13
200	x	260	88	94	106	M 12	145	43.400	434	97	75	14
220	x	285	98	104	116	M 12	145	55.000	501	84	65	18
240	x	305	98	104	116	M 12	145	70.000	586	88	69	20
260	x	325	98	104	116	M 12	145	90.000	695	91	73	21
280	x	355	120	126	140	M 14	230	120.000	859	98	77	32
300	x	375	120	126	140	M 14	230	126.000	839	92	74	35
320	x	405	135	142	158	M 16	355	185.000	1.156	107	85	48
340	x	425	135	142	158	M 16	355	201.000	1.184	101	81	51
360	x	455	158	165	183	M 18	485	216.000	1.201	79	63	70
380	x	475	158	165	183	M 18	485	257.000	1.352	85	68	74
400	x	495	158	165	183	M 18	485	320.000	1.602	95	77	78
420	x	515	158	165	183	M 18	485	349.000	1.660	91	74	82
440	x	545	172	180	200	M 20	690	394.000	1.789	87	70	102
460	x	565	172	180	200	M 20	690	411.000	1.789	84	68	106
480	x	585	172	180	200	M 20	690	466.000	1.940	89	73	111
500	x	605	172	180	200	M 20	690	485.000	1.940	85	70	115
520	x	630	190	200	220	M 20	690	540.000	2.070	79	65	140
540	x	650	190	200	220	M 20	690	560.000	2.070	77	64	146
560	x	670	190	200	220	M 20	690	650.000	2.329	83	69	152
580	x	690	190	200	220	M 20	690	680.000	2.329	80	67	157
600	x	710	190	200	220	M 20	690	700.000	2.329	77	65	162
620	x	730	190	200	220	M 20	690	720.000	2.329	75	64	167
640	x	750	190	200	220	M 20	690	750.000	2.329	73	62	172