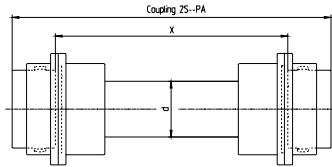
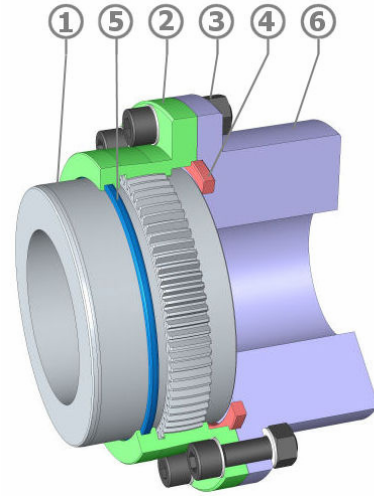
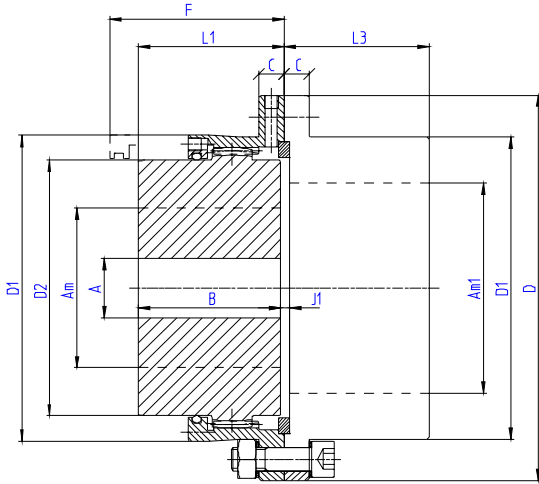
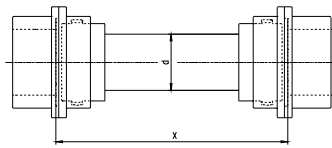


Type P-PA – Horizontal working position



Ex Mounting



In Mounting

X: Distance between end shafts
X and d are defined according to the needs.

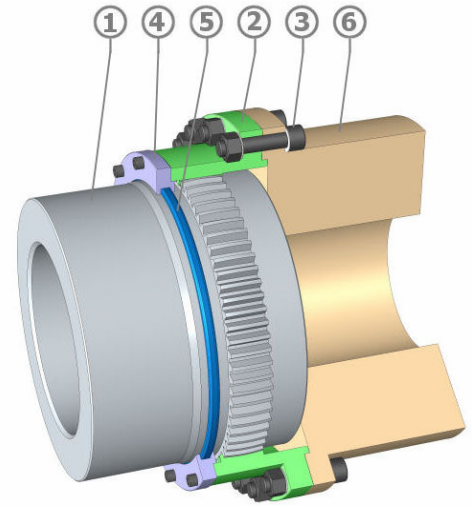
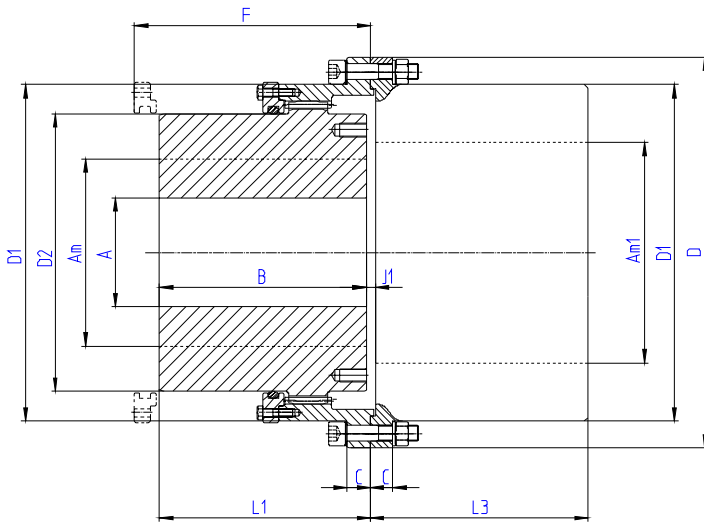
Item	Designation
1	Gear Hub
2	Half cover
3	Screws & Bolts
4	Centering ring
5	Seal
6	Solid hub

Example of designation: 2 S 80 PA 1000 In
SENIOR size 80, made of two half couplings **S80 P** joined by a spacer shaft for X = 1000 mm and a "In Mounting" (rigid hubs set up at the ends).
Ex Mounting (gear hubs set up at the ends)

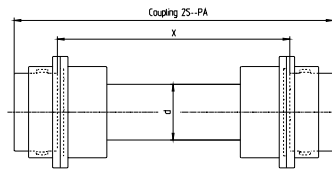
Size		50	68	80	100	115	135	150	170	190	215	230	250	280
Nominal Torque	Nm	1200	3000	5200	9000	13700	21300	29200	43000	60700	88200	105000	138000	190000
Max Bore	Am*	50	68	80	100	115	135	150	170	190	215	230	250	280
	Am**	46	63	75	92	106	125	140	160	175	200	210	230	250
	Am1*	60	80	95	115	135	155	175	190	220	250	265	290	310
	Am1**	55	75	85	110	125	145	160	180	205	230	250	270	280
Rough bore	A	18	18	26	35	35	58	68	83	98	108	118	128	128
	B	43	50	62	76	90	105	120	135	150	175	190	220	310
	C	10	10	11	11	14	18	20	20	24	24	30	30	30
	D	105	140	169	200	228	266	298	330	368	410	440	473	498
	D1	83.6	112.6	134	164	188	219	245	277	309	351	374	407	432
	D2	69.4	95	112	138	159	188	209	238	263	302	319	349	374
	J1	3.5	4	4	5	6	7	8	9	10	10	11.5	12.5	12.5
	F	55	63	75	93	112	130	145	163	180	205	220	253	343
	L1	44.5	51.5	63.5	78.5	92.5	108	123	139	154	179	194	225	315
L3	45	52.5	64.5	78.5	93.5	109	125	140	156	181	197.5	227.5	317.5	
Weight •	Kg	4.5	9.1	15.6	27.6	43.5	70	99	139	193	281	352	472	712
Moment of Inertia J•	Kgm ²	0.005	0.017	0.041	0.106	0.220	0.484	0.861	1.493	2.6	4.74	6.85	10.6	17.16
Max speed (rpm)		5400	4000	3400	2700	2400	2000	1800	1600	1500	1300	1200	1100	1000
	y	14000	10500	8900	7200	6300	5400	4800	4200	3800	3300	3100	2900	2700
Weight of grease ▽	Kg	0.028	0.058	0.085	0.17	0.26	0.41	0.57	0.73	1.15	1.50	2.10	2.60	3

* Bore with keyway according ISO R 773 or DIN 6885/1 standard
 ** Shrink fitting
 • For couplings S..P - Solid hubs
 y Dynamically balanced
 ▽ Per coupling S..P

Type P-PA – Horizontal working position



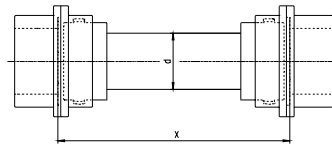
Item	Designation
1	Gear Hub
2	Half cover
3	Screws & Bolts
4	Cover
5	Seal
6	Solid hub



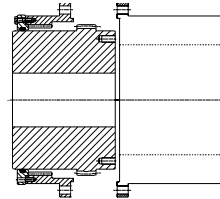
Ex Mounting

X: Distance between end shafts
X and d are defined according to the needs.

Inspection of the gear teeth is possible without having to remove the covers.



In Mounting



Example of designation: 2 S 310 PA 1000 In SENIOR size 310, made of two half couplings S310 P joined by a spacer shaft for X = 1000 and a "In Mounting".
In Mounting (rigid hubs set up at the ends).
Ex Mounting (gear hubs set up at the ends).

Size		310	330	370	400	430	475	510	550	610	650	710	750	800
Nominal Torque	Nm	255000	320000	410000	525000	670000	850000	1100000	1400000	1800000	2400000	3200000	3750000	4950000
Max Bore	Am*	310	330	370	400	430	475	510	550	610	650	710	750	800
	Am**	310	330	370	400	430	475	510	550	610	650	710	750	800
	Am1	Consult CMD												
Rough bore	A	163	176	191	240	257	279	304	329	358	394	434	457	501
	B	310	330	350	370	430	480	505	515	535	575	610	650	700
	C	34	34	39	43	47	56	56	55	65	70	70	70	75
	D	575	608	676	735	793	940	990	1100	1225	1285	1395	1450	1555
	D1	494	518	576	637	695	785	840	910	1000	1060	1170	1225	1295
	D2	411	438	492	535	581	645	700	770	835	890	975	1030	1095
	J1	16	16	16	20	20	20	24	28	30	30	32	32	32
	F	350	370	395	420	478	550	570	575	600	640	680	720	770
	L1	316	336	356	377.5	437.5	488	515	525	547.5	587.5	625	665	715
L3	320	340	360	382	442	492	519	531	552	592	628	668	718	
Weight •	Kg	891.5	1049	1381.1	1774.4	2428.7	3476.1	4223.5	5118.7	6442.7	7794.4	9954.4	11582.7	14105.5
Moment of Inertia J•	Kgm ²	26.46	34.5	56.4	88.2	141.6	265.4	367.7	530.6	819	1106.4	1693.7	2142.2	2947.8
Max speed (rpm)		903	857	760	696	643	573	542	495	446	418	377	358	341
	y	2409	2285	2026	1857	1714	1528	1445	1320	1188	1114	1005	955	909
Weight of grease ∇	Kg	3.1	3.31	3.95	5.5	6.75	9.1	11.15	11.9	15.25	18.55	24.25	31	36.75

* Bore with keyway according ISO R 773 or DIN 6885/1 standard
 ** Shrink fitting
 • For couplings S..P - Solid hubs
 y Dynamically balanced
 ∇ Per coupling S..P