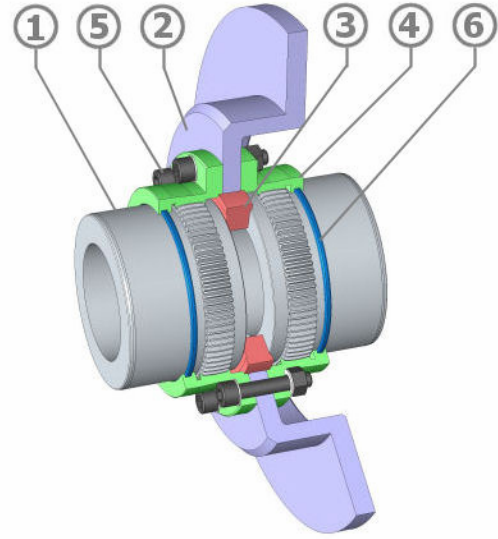
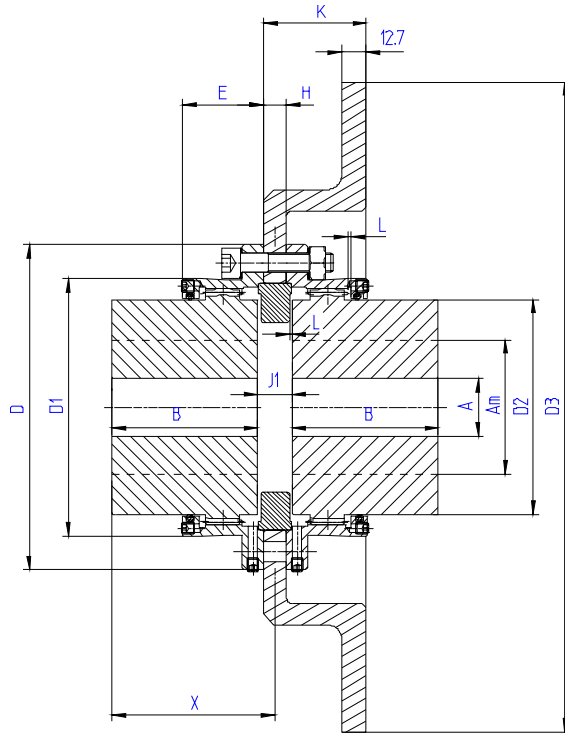
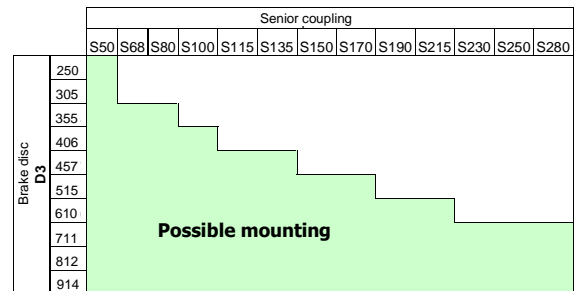


## Type SDFC – Horizontal working position



Item	Designation
1	Gear Hub
2	elbow shape brake disc
3	Centering ring
4	Half cover
5	Screws & Bolts
6	Seal

Brake disc dimensions										
D3	250	305	355	406	457	515	610	711	812	914
H	6	13	16	13	16	16	16	19	25	25
K	36	41	54							
Weight (kg)	4	7.3	10.9	14.1	19.1	22.7	33	52.3	85.5	110.9



Size		50	68	80	100	115	135	150	170	190	215	230	250	280	
Nominal Torque	Nm	1200	3000	5200	9000	13700	21300	29200	43000	60700	88200	105000	138000	190000	
Max Bore	Am*	50	68	80	100	115	135	150	170	190	215	230	250	280	
	Am**	46	63	75	92	106	125	140	160	175	200	210	230	250	
Rough bore	A	18	18	26	35	35	58	68	83	98	108	118	128	128	
	B	43	50	62	76	90	105	120	135	150	175	190	220	310	
	D	105	140	169	200	228	266	298	330	368	410	440	473	498	
	D1	83.6	112.6	134	164	188	219	245	277	309	351	374	407	432	
	D2	69.4	95	112	138	159	188	209	238	263	302	319	349	374	
	E	30.5	36	42	52	63.5	74	82	91	100	101.5	122	135.5	139	
	J1	$J1 = H + 2 L$													
	L	1.3	1.5	2	2.5	2.8	3.2	3.5	4	4.5	5	5	5.8	7.3	
	X	$X = B + (J1/2)$													
	Weight •	Kg	3.7	7.7	13.2	23.5	36.7	59	84	119	164	243	300	406	616
Moment of Inertia J •	Kgm <sup>2</sup>	0.004	0.012	0.030	0.079	0.166	0.368	0.649	1.141	1.962	3.63	5.08	8.08	13.07	
		5400	4000	3400	2700	2400	2000	1800	1600	1500	1300	1200	1100	1000	
Max speed (rpm)	y	14000	10500	8900	7200	6300	5400	4800	4200	3800	3300	3100	2900	2700	
		14000	10500	8900	7200	6300	5400	4800	4200	3800	3300	3100	2900	2700	
Weight of grease ▽	Kg	0.04	0.08	0.12	0.26	0.38	0.6	0.8	1	1.7	2.2	2.9	3.8	4	

\* Bore with keyway according ISO R 773 or DIN 6885/1 standard  
 \*\* Shrink fitting  
 • Solid hubs without brake disc  
 y Dynamically balanced  
 ▽ Per coupling